

TNS-783 Tub & Shower Faucet • Spec Sheet

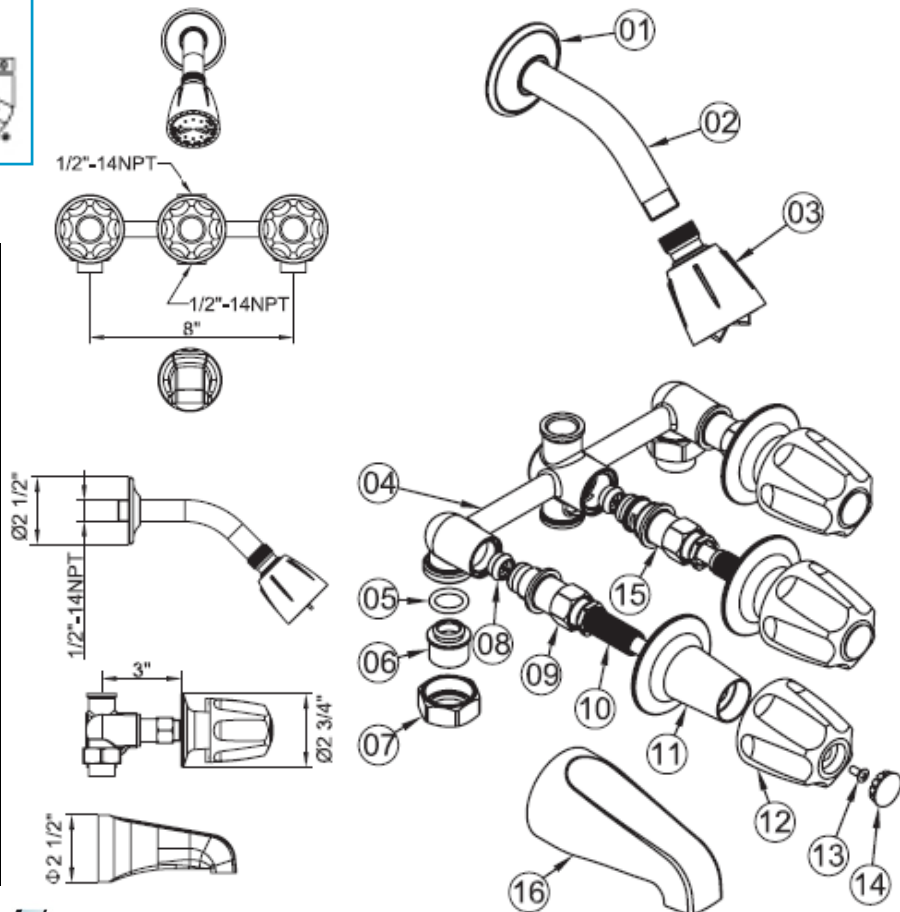


FEATURES & BENEFITS

- Classic Design
- Chrome Plated Metal Handles
- Compression Stems
- Brass Water Way
- 1/2" FIP & 1/2" Solder Inlet Connection
- 8" Center
- 2.5 GPM at 80 PSI
- Chrome Plated Brass Shower Arm
- Chrome Plated Shower Head
- Threaded Die Cast Zinc Tub Spout

MATERIAL SPECIFICATIONS

No.	Part	Material
1	Shower Flange	Stainless Steel
2	Shower Arm	Brass
3	Shower Head	ABS
4	Body	Brass
5	O-Ring	NBR
6	Union	Brass
7	Coupling Nut	Brass
8	Seat	Brass
9	Compression Stem	Brass
10	Sleeve	Poly Propylene
11	Escutcheon	Zinc
12	Handle	Zinc
13	Handle Screw	Stainless Steel
14	Index Button	Acrylic
15	Diverter Stem	Brass
16	Tub Spout	Zinc



MATCO-NORCA
Global sourcing. National compliance. Local service.

NEW YORK PO Box 27, Rt. 22, Brewster NY 10509 • Toll Free: 800-431-2082 • Fax: 845-278-9056
TEXAS 1150 Silber Rd., Houston TX 77055 • Toll Free: 800-935-5456 • Fax: 713-680-2999
CALIFORNIA 5593 Fresca Dr., La Palma CA 90623 • Toll Free: 866-532-8306 • Fax: 866-532-8307
 WEB: www.matco-norca.com EMAIL: mail@matco-norca.com