

AE-985/AE-985S

ROMAN TUB FAUCET



ROMAN TUB FAUCET



Product Spec Sheet

FEATURES & BENEFITS

- Solid Brass Body
- Fits 8"-16" Installation
- Rough-In & Trim Kit Application
- Metal Lever Handles
- ADA Complicant
- Drip-Free Ceramic Cartridge
- 1/2"-14 NPS Inlet
- 100% Factory Pressure Tested Before Shipment

- * AE-985
Chrome Finish
- * AE-985S
Brushed Nickel Finish

Approvals:
Meets or Exceeds The Following:

- * ANSI/ASME A112.18.1
- * CSA B125.1
- * IAPMO/UPC
- * ADA

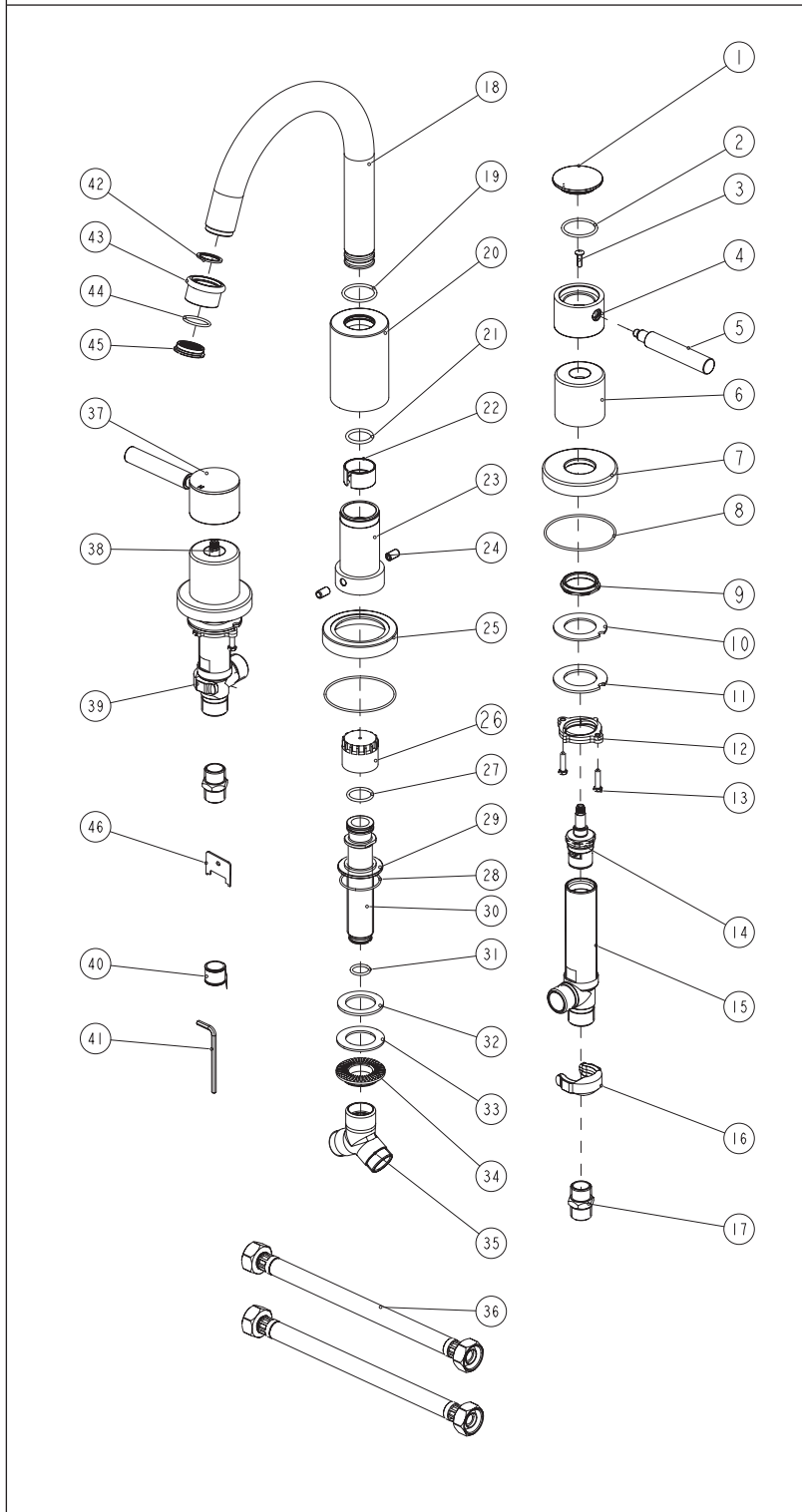


BREWSTER, NY: TEL: 800-431-2082
HOUSTON, TX: TEL: 800-935-5456
LA PALMA, CA: TEL: 866-532-8306

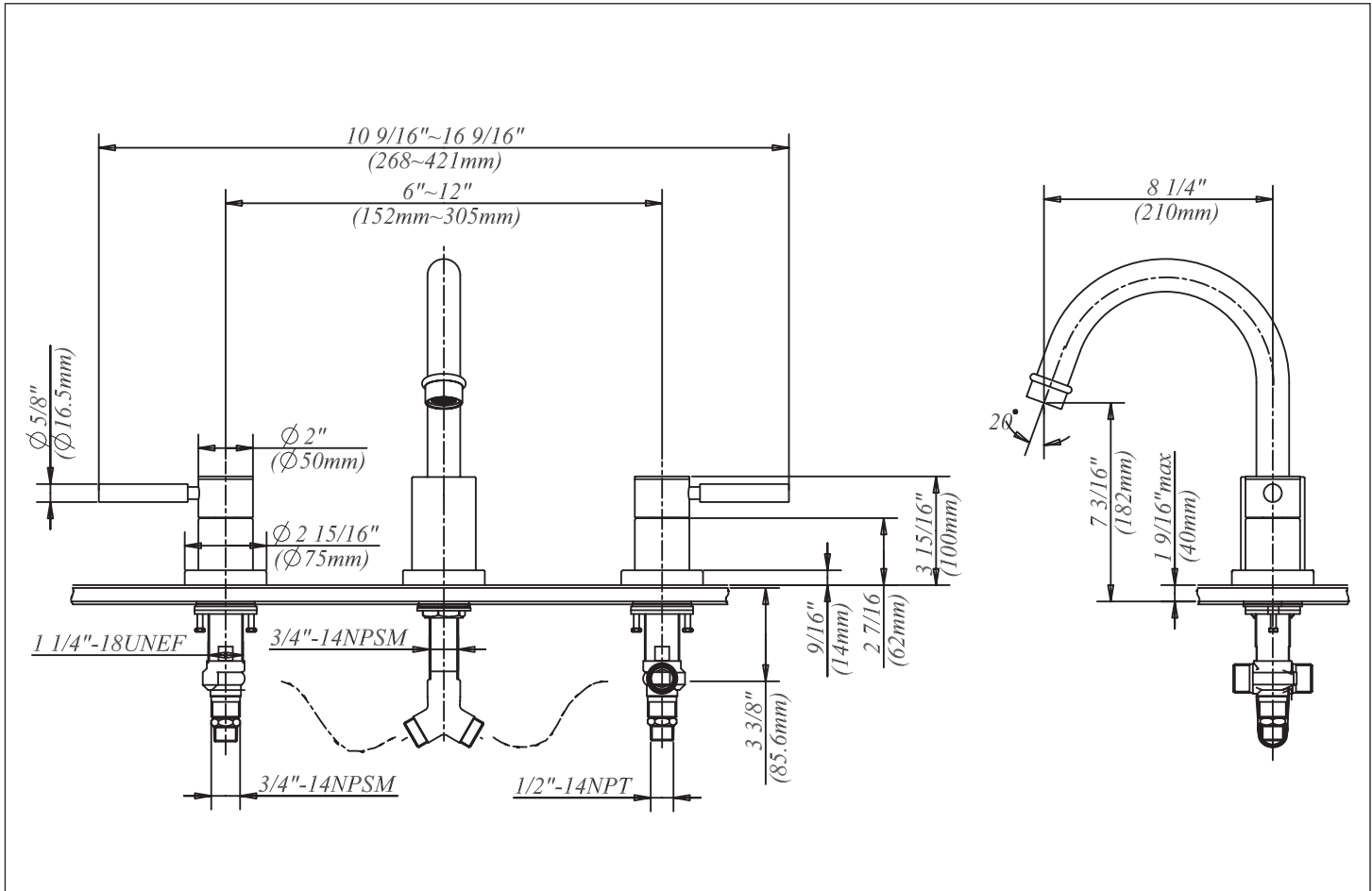
FAX: 800-640-2252
FAX: 800-683-4247
FAX: 866-832-8307

Visit Our Web Site : www.matco-norca.com

No	Part Title	Material
1	Cap	Brass
2	O-Ring	Rubber
3	Screw	Brass
4	Handle Adaptor	Brass
5	Handle	Brass
6	Canopy	Brass
7	Base	Brass
8	O-Ring	Rubber
9	Connector	Brass
10	Seal	Rubber
11	Washer	Steel
12	Nut	Brass
13	Screw	Steel
14	Cartridge	Ceramic
15	Body	Brass
16	Clip	PP
17	Hose Adaptor	Brass
18	Spout	Brass
19	O-Ring	Rubber
20	Sleeve	Brass
21	O-Ring	Rubber
22	Clip	Resin
23	Connector	Brass
24	Screw	Steel
25	Base	Brass
26	Sleeve	ABS
27	O-Ring	Rubber
28	O-Ring	Rubber
29	Nut	Brass
30	Shank	Brass
31	O-Ring	Rubber
32	Seal	Rubber
33	Washer	Brass
34	Nut	Brass
35	Y-Adaptor	Brass
36	Hose	Plastic/Stainless Steel
37	Cap	Brass
38	Cartridge	Ceramic
39	Clip	PP
40	Tape	Telfon
41	Wrench	Steel
42	Seal	Rubber
43	Shell	Brass
44	O-Ring	Rubber
45	Aerator	ABS
46	Wrench	Steel



Product Spec Sheet



Product Spec Sheet



Approvals:

Meets or Exceeds The Following:

- * ANSI/ASME A112.18.1
- * CSA B125.1
- * IAPMO/UPC
- * ADA



BREWSTER, NY: P.O. BOX 27 Route 22 Brewster, NY 10509
HOUSTON, TX: 1150 Silber Road Houston, TX 77055
LA PALMA, CA: 5593 Fresca Drive La Palma, CA 90623

Visit Our Web Site : www.matco-norca.com