

**PO-900C**  
 **PO-900CJP**

**PO-900BN**  
 **PO-900BNJP**



## **Two Handle Roman Tub Faucet**



### **FEATURES & BENEFITS**

- Metal Lever Handles
- Ceramic Cartridges
- Min Flow Rate 4.0 GPM (15.1 L/MIN) at 20 PSI (ASME A112.18.1)

#### **APPROVALS:**

**Meets or Exceeds The Following:**

- \* ANSI/ASME A112.18.1
- \* IAPMO/cUPC

PO-900C  
Chrome Finish

PO-900BN  
Brushed Nickel Finish

PO-900CJP  
Trim Kit For Roman Tub  
Chrome Finish

PO-900BNJP  
Trim Kit For Roman Tub  
Brushed Nickel Finish



**CALIFORNIA:**  
**TEXAS:**  
**NEW YORK:**

**TEL: 866-532-8306**  
**TEL: 800-935-5456**  
**TEL: 800-431-2082**

**FAX: 866-532-8307**  
**FAX: 800-683-4247**  
**FAX: 800-640-2252**

Visit Our Web Site : [www.matco-norca.com](http://www.matco-norca.com)

**Product Spec Sheet**

**PO-900C**

**PO-900BN**

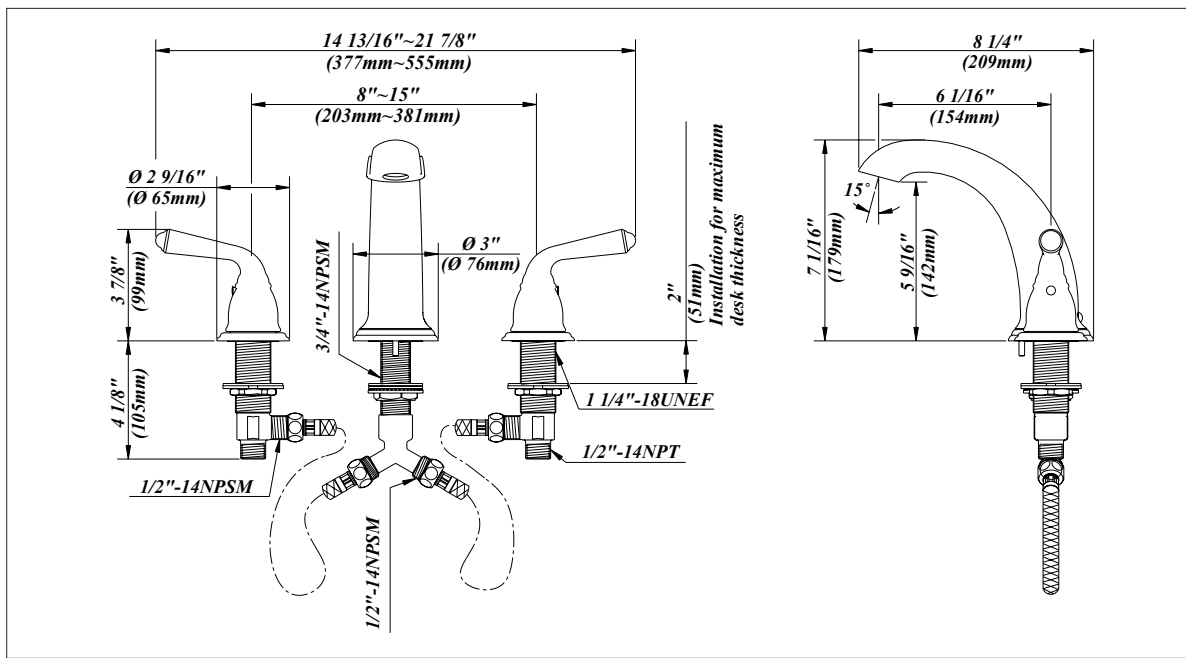
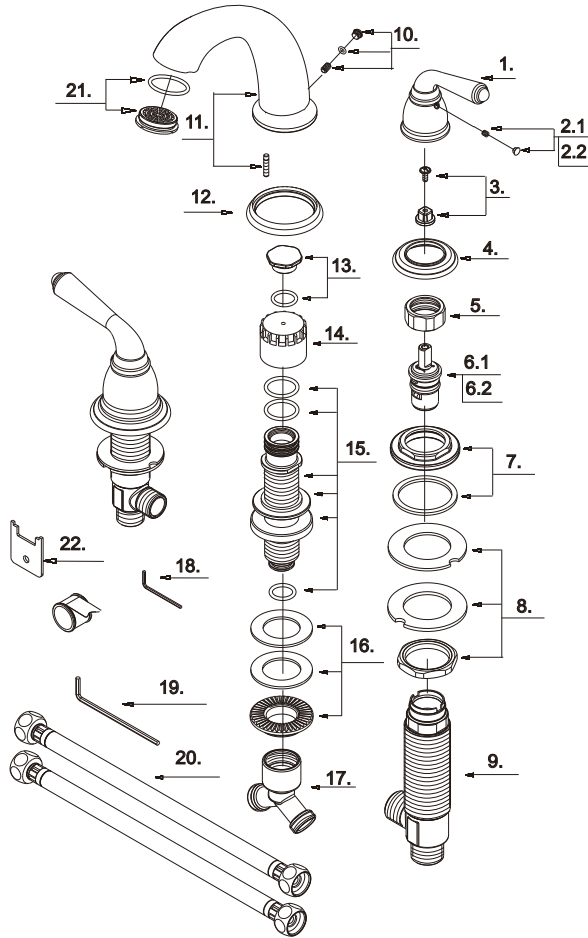


**PO-900CJP**

**PO-900BNJP**

# Two Handle Roman Tub Faucet

No.	Name	Part No.
1	Metal Handle	A069130
2.1	Index Button-Cold	A603595C
2.2	Index Button-Hot	A603595H
3	Handle Adapter	A66D880
4	Handle Trim Ring	A215292
5	Retainer Nut	A016259
6.1	Ceramic Disc Cartridge-Cold	A507102N
6.2	Ceramic Disc Cartridge-Hot	A507101N
7	Lock Nut	A66D928
8	Mounting Hardware	A66D626
9	Handle Valve Body	A002570
10	Spout Trim Cap	A603301
11	Spout Set	A666881
12	Spout Trim Ring	A303036
13	Spout Plug	A603046
14	Spout Rough In Cap	A045153
15	Spout Body	A66D929
16	Mounting Hardware	A663491
17	"Y" Adaptor	A015224
18	Hex Wrench (H2.5 * 19 mm L * 53 mm L)	A031000NI
19	Hex Wrench (H3.18 * 20 mm L * 90 mm L)	A031017NI
20	Supply Hose	A105051
21	Flow Straightener	A66D500KP
22	Wrench (30*26.4*1.5T)	A031264NI



# Product Spec Sheet

CALIFORNIA:  
TEXAS:  
NEW YORK:

TEL: 866-532-8306  
TEL: 800-935-5456  
TEL: 800-431-2082

FAX: 866-532-8307  
FAX: 800-683-4247  
FAX: 800-640-2252

Visit Our Web Site : [www.matco-norca.com](http://www.matco-norca.com)