

□ **PD-140C**

□ **PD-140SS**



Single Handle Kitchen Faucet



Product Spec Sheet

FEATURES & BENEFITS

- This Product Contains Less Than 0.25% Weighted Average Lead Content On Wetted Surfaces
- Fits Two Hole Or Four Hole Install
- Metal Lever Handle
- Ceramic Cartridge
- With Side Spray
- Max Flow Rate 1.5 GPM (5.7 L/MIN) At 60 PSI (ASME A112.18.1M/A112.18.1)

PD-140C
Chrome Finish

PD-140SS
Stainless Steel Finish

APPROVALS:

Meets or Exceeds The Following:

- * ANSI/ASME A112.18.1M/A112.18.1
- * NSF/ANSI 61 - Sec. 9
- * NSF/ANSI 372
- * IAPMO/cUPC
- * CA AB1953



NSF/ANSI 372
NSF/ANSI 61-9



CALIFORNIA:
TEXAS:
NEW YORK:

TEL: 866-532-8306
TEL: 800-935-5456
TEL: 800-431-2082

FAX: 866-532-8307
FAX: 800-683-4247
FAX: 800-640-2252

Visit Our Web Site : www.matco-norca.com

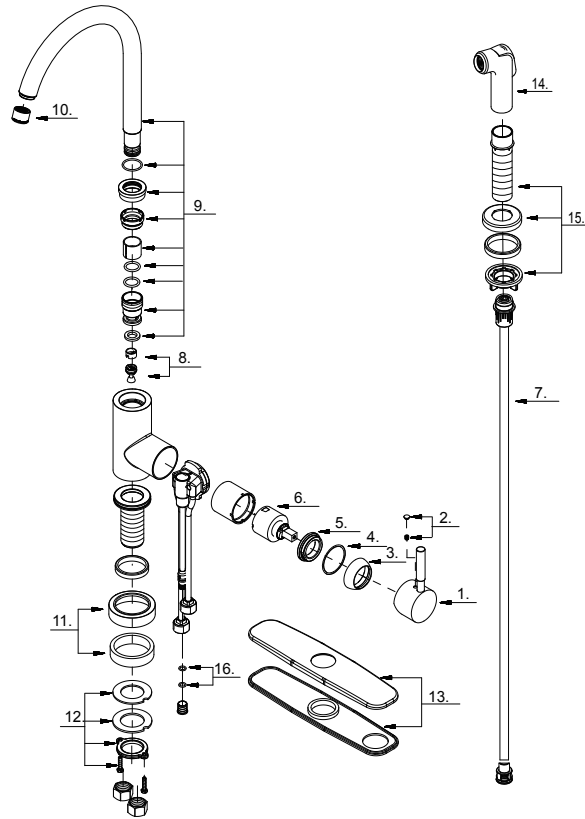
□ **PD-140C**

□ **PD-140SS**

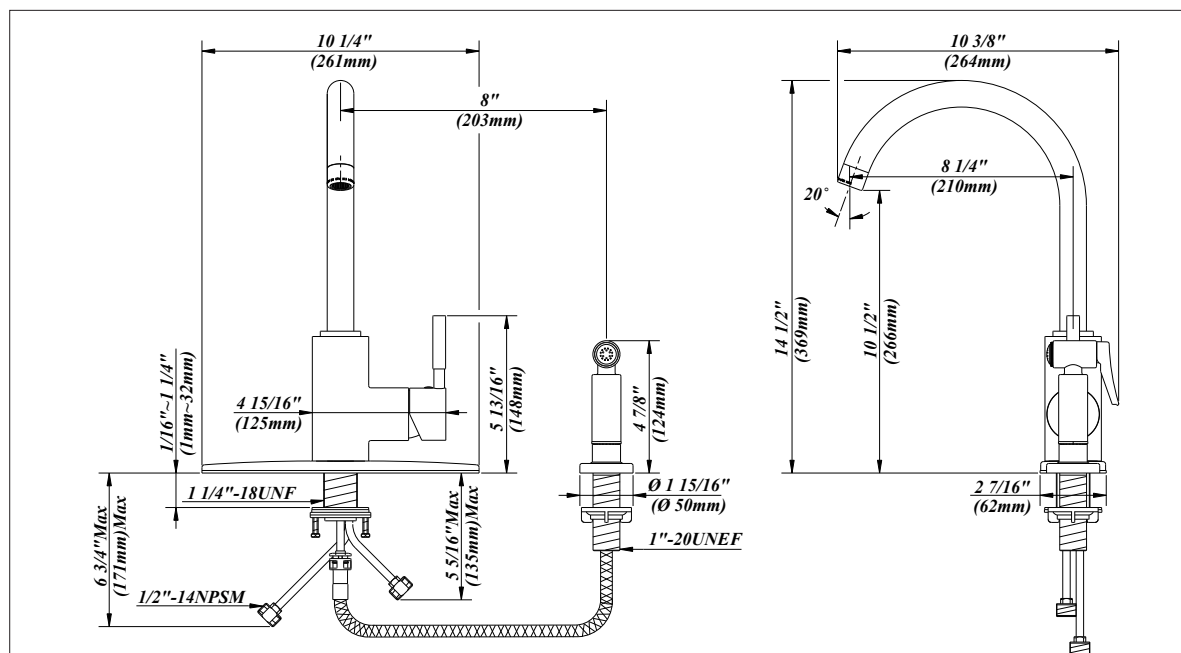


Single Handle Kitchen Faucet

No.	Name	Part No.
1	Metal Handle Assembly	A602592
2	Index Button-Cold/Hot	A66G053
3	Trim Cap	A103140
4	Washer	A047134
5	Locking Nut	A104100
6	Ceramic Disc Cartridge	A507838N
7	Spray Hose	A512139N
8	Diverter Set	A66D889W
9	Spout Assembly	A666251W
10	Aerator	A500023N-51
11	Base Trim Ring	A667955
12	Mounting Hardware Assembly	A66D401
13	Deck Plate & Putty Plate	A667003
14	Side Spray	A503002N
15	Spray Holder Assembly (3-15/16" L)	A664250-P
16	O-Ring Set (Φ1/4" ID * Φ3/8" OD)	A668178N



Product Spec Sheet



CALIFORNIA:
TEXAS:
NEW YORK:

TEL: 866-532-8306
TEL: 800-935-5456
TEL: 800-431-2082

FAX: 866-532-8307
FAX: 800-683-4247
FAX: 800-640-2252

Visit Our Web Site : www.matco-norca.com