

FT-306 Kitchen Faucet • Spec Sheet



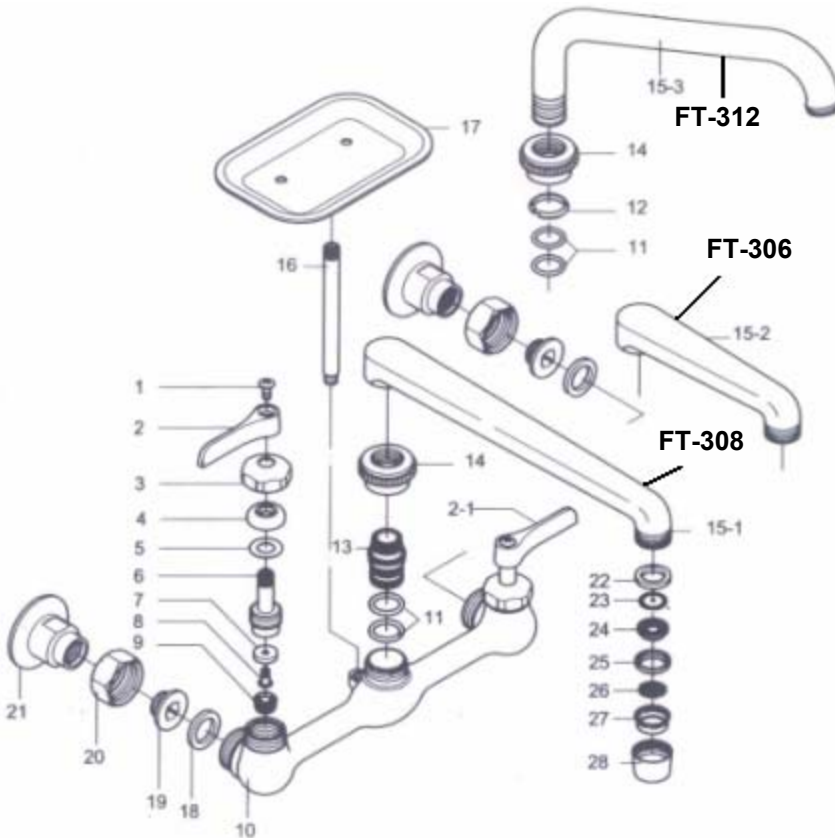
FEATURES & BENEFITS

- 8" Centers Chrome Plated
- Wall Mount
- Two Metal Lever Handles
- 6" Cast Spout
- With Soap Dish

FT-308 - Same as Above with
8" Cast Spout

FT-312 - Same as Above with
12" Tubular Spout

MATERIAL SPECIFICATIONS



No.	Part	Material
1	Screw	Brass
2	Hot Handle	Zinc
2-1	Cold Handle	Zinc
3	Bonnet	Brass
4	Packing	NBR
5	Washer	Brass
6	Stem	Brass
7	Gasket	NBR
8	Set Screw	Brass
9	Seat	Brass
10	Body	Brass
11	O-Ring	NBR
12	Split Ring	POM
13	Connector	Brass
14	Spout Nut	Brass
15-1	6" Spout	Brass
15-2	8" Spout	Brass
15-3	12" Spout	Brass
16	Bolt	Brass
17	Soap Plate	Zinc
18	Washer	NBR
19	Eccentric Flange	Brass
20	Nut	Brass
21	Inlet Fitting	Brass
22	Washer	NBR
23	Filter	Stainless
24	Aerator Cap	Brass
25	Washer	NBR
26	Flow Restriction	POM
27	Filter Net	POM
28	Aerator Cap	Brass

 **MATCO-NORCA**
Global sourcing. National compliance. Local service.