

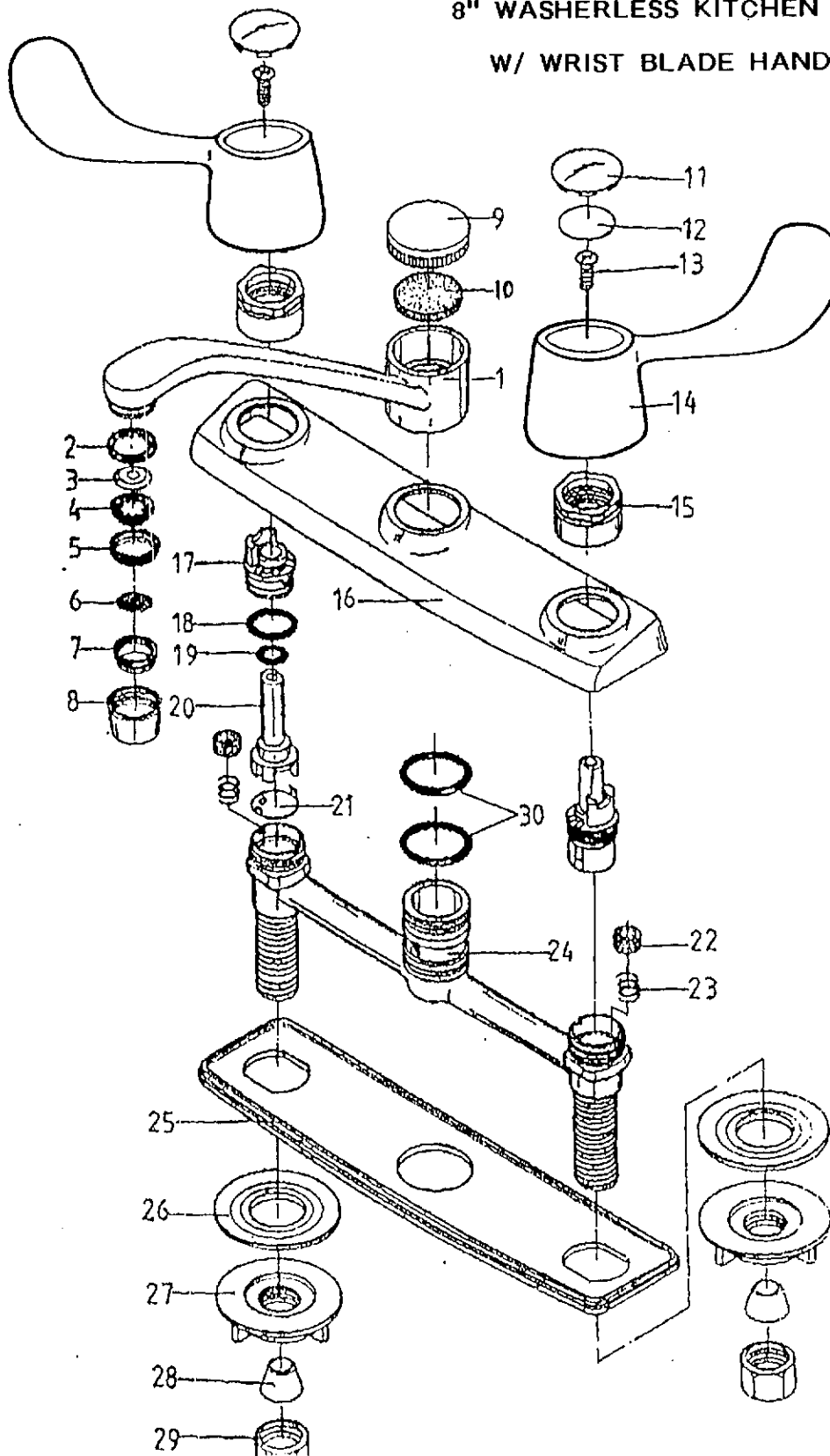


P.O. BOX 27 • BREWSTER • NEW YORK 10509 • (800) 431-2082 • (914) 278-7570 • FAX: (914) 278-9056

### MODEL FT-300WB

8" WASHERLESS KITCHEN FAUCET

W/ WRIST BLADE HANDLES



| NO. | PART NAME       | MATERIAL     | NOTE |
|-----|-----------------|--------------|------|
| 1   | SPOUT           | BRASS (C.P.) | 1    |
| 2   | WASHER          | RUBBER       | 1    |
| 3   | FLOW RESTRICTOR | PLASTIC      | 1    |
| 4   | FILTER NET      | PLASTIC      | 1    |
| 5   | DURACON RING    | DURACON      | 1    |
| 6   | FILTER          | STEEL        | 2    |
| 7   | FILTER SEAT     | PLASTIC      | 1    |
| 8   | AERATOR CAP     | BRASS (C.P.) | 1    |
| 9   | SPOUT CAP       | ZINC (C.P.)  | 1    |
| 10  | GASKET          | RUBBER       | 1    |
| 11  | INDEX           | PLASTIC      | 2    |
| 12  | NAME PLATE      | ALUMINUM     | 2    |
| 13  | SCREW           | STAINLESS    | 2    |
| 14  | HANDLE          | ZINC (C.P.)  | 2    |
| 15  | NUT             | ZINC (C.P.)  | 2    |
| 16  | HOUSING         | ZINC (C.P.)  | 1    |
| 17  | COVER STEM      | PLASTIC      | 2    |
| 18  | O-RING          | RUBBER       | 2    |
| 19  | O-RING          | RUBBER       | 2    |
| 20  | STEM            | PLASTIC      | 2    |
| 21  | SEAT PLATE      | STAINLESS    | 2    |
| 22  | SEAT            | RUBBER       | 2    |
| 23  | SPRING          | STAINLESS    | 2    |
| 24  | BODY            | BRASS        | 1    |
| 25  | BOTTOM GASKET   | PLASTIC      | 1    |
| 26  | WASHER          | RUBBER       | 2    |
| 27  | LOCK NUT        | PLASTIC      | 2    |
| 28  | CONE WASHER     | RUBBER       | 2    |
| 29  | COUPLING NUT    | BRASS        | 2    |
| 30  |                 |              |      |