

- CL-900C** **CL-900CJP**
- CL-900BN** **CL-900BNJP**



Two Handle Roman Tub Faucet



Product Spec Sheet

FEATURES & BENEFITS

- Metal Wing Handles
- Ceramic Cartridges
- Min Flow Rate 4.0 GPM (15.1 L/MIN) at 20 PSI (ASME A112.18.1)

APPROVALS:

Meets or Exceeds The Following:

- * ANSI/ASME A112.18.1
- * IAPMO/cUPC

CL-900C
Chrome Finish

CL-900BN
Brushed Nickel Finish

CL-900CJP
Trim Kit For Roman Tub
Chrome Finish

CL-900BNJP
Trim Kit For Roman Tub
Brushed Nickel Finish



CALIFORNIA:
TEXAS:
NEW YORK:

TEL: 866-532-8306
TEL: 800-935-5456
TEL: 800-431-2082

FAX: 866-532-8307
FAX: 800-683-4247
FAX: 800-640-2252

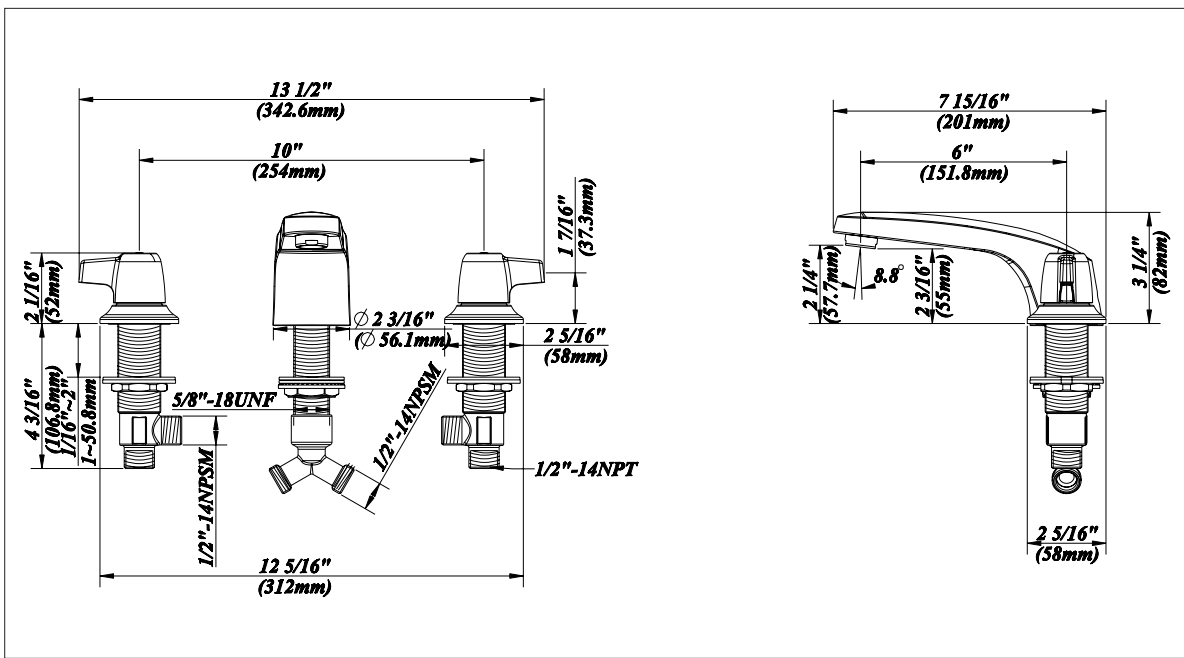
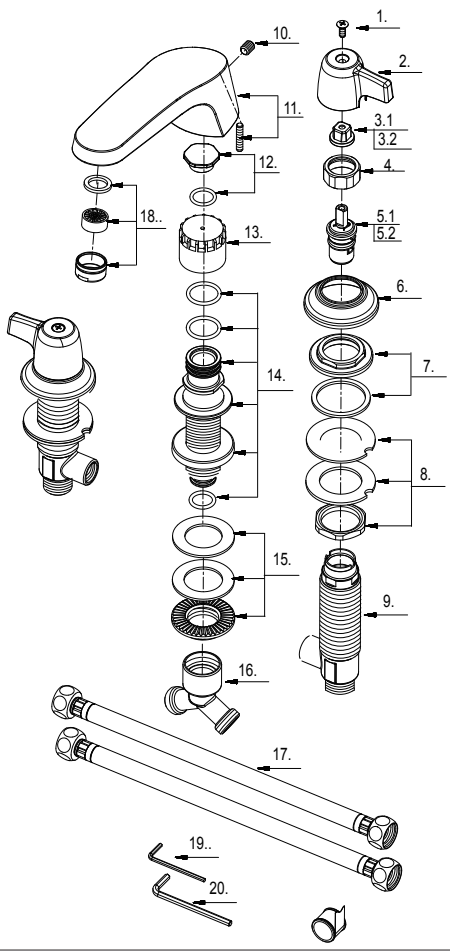
Visit Our Web Site : www.matco-norca.com

- CL-900C** **CL-900CJP**
- CL-900BN** **CL-900BNJP**



Two Handle Roman Tub Faucet

No.	Name	Part No.
1	Screw (3/16" -24 * 7/16" L)	A008049
2	Metal Handle	A069790
3.1.	Handle Adapter-Cold	A110114C
3.2.	Handle Adapter-Hot	A110114H
4	Retainer Nut	A016259
5.1	Ceramic Disc Cartridge-Cold	A507102N
5.2	Ceramic Disc Cartridge-Hot	A507101N
6	Handle Trim Ring	A215342
7	Nut & Seal	A66D928
8	Mounting Hardware Assembly	A66D626
9	Handle Valve Body	A002570
10	Screw (5/16" -18 UNC-2B * 3/8" L)	A053051
11	Spout Set	A666694-T
12	Spout Plug	A603046
13	Spout Rough In Cap	A045153
14	Spout Body	A66D929
15	Mounting Hardware	A663491
16	"Y " Adaptor	A015224
17	Supply Hose	A105051
18	Aerator	A500140
19	Hex Wrench (H2.5 * 19 mm L * 53 mm L)	A031000NI
20	Hex Wrench (H4 * 20 mm L * 70 mm L)	A031011NI



Product Spec Sheet