

□ **BL-200C**

□ **BL-240C**



8" Two Handle Kitchen Faucet

Product Spec Sheet



FEATURES & BENEFITS

- This Product Contains Less Than 0.25% Weighted Average Lead Content On Wetted Surfaces
- Metal Lever Handles
- Ceramic Cartridges
- With Side Spray
- Max Flow Rate 1.5 gpm (5.7 L/min) at 60 psi (ASME A112.18.1M/A112.18.1)

BL-240C
Chrome Finish

BL-200C
Less Side Spray
Chrome Finish

APPROVALS:

Meets or Exceeds The Following:

- * ANSI/ASME A112.18.1M/A112.18.1
- * NSF/ANSI 61 - Sec. 9
- * NSF/ANSI 372
- * IAPMO/cUPC
- * CA AB1953



NSF/ANSI 372
NSF/ANSI 61-9



CALIFORNIA:
TEXAS:
NEW YORK:

TEL: 866-532-8306
TEL: 800-935-5456
TEL: 800-431-2082

FAX: 866-532-8307
FAX: 800-683-4247
FAX: 800-640-2252

Visit Our Web Site : www.matco-norca.com

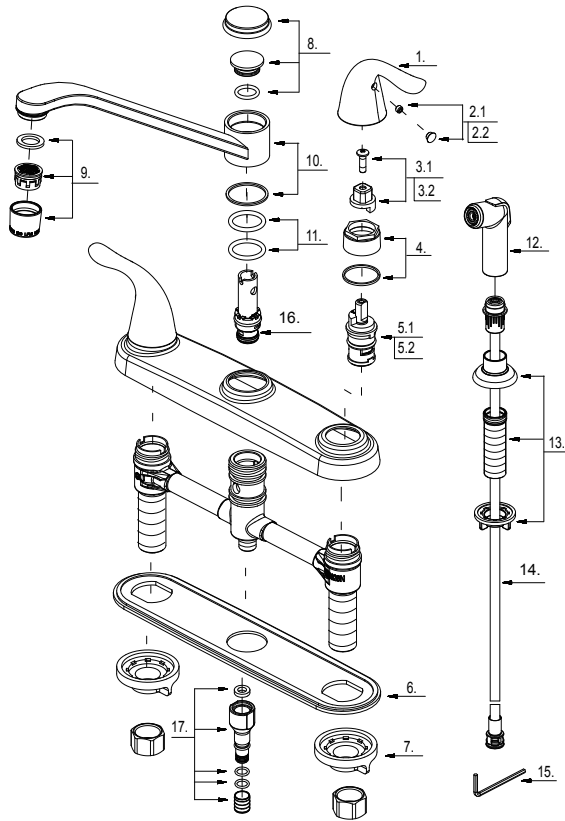
□ **BL-200C**

□ **BL-240C**

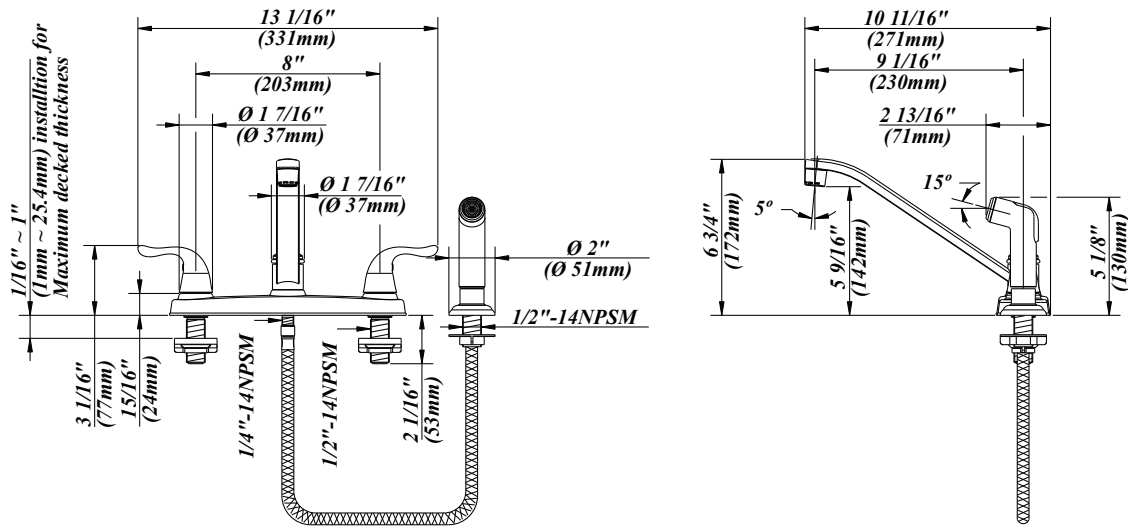


8" Two Handle Kitchen Faucet

| No. | Name | Part No. |
|-----|--|-------------|
| 1 | Metal Handle | A069115 |
| 2.1 | Index Button-Cold | A603595C |
| 2.2 | Index Button-Hot | A603595H |
| 3.1 | Handle Adaptor-Cold | A66D574C |
| 3.2 | Handle Adaptor-Hot | A66D574H |
| 4 | Retainer Nut & Washer | A663631 |
| 5.1 | Ceramic Disc Cartridge -Cold | A507104N |
| 5.2 | Ceramic Disc Cartridge -Hot | A507103N |
| 6 | Putty Plate | A011125 |
| 7 | Lock Nut Set | A504023 |
| 8 | Spout Trim Cap | A663163N |
| 9 | Aerator | A500871N-51 |
| 10 | Spout Set | A666321N |
| 11 | O-Ring Set ($\Phi 7/8"$ ID * $\Phi 1-1/8"$ OD) | A668000N |
| 12 | Side Spray | A503002N |
| 13 | Spray Holder Assembly (3-15/16" L) | A220008 |
| 14 | Spray Hose | A512139N |
| 15 | Hex Wrench (H2.5 * 19 mm L * 53 mm L) | A031000NI |
| 16 | Spray Diverter w/Vacuum Breaker | A66G174N |
| 17 | Sealing Kit | A66G352N |



Product Spec Sheet



CALIFORNIA:
TEXAS:
NEW YORK:

TEL: 866-532-8306
TEL: 800-935-5456
TEL: 800-431-2082

FAX: 866-532-8307
FAX: 800-683-4247
FAX: 800-640-2252

Visit Our Web Site : www.matco-norca.com