

**BL-200C**

**BL-200SS**

**BL-240C**

**BL-240SS**



## 8" Two Handle Kitchen Faucet

# Product Spec Sheet



### FEATURES & BENEFITS

- This Product Contains Less Than 0.25% Weighted Average Lead Content On Wetted Surfaces
- Metal Lever Handles
- Ceramic Cartridges
- With Side Spray
- Max Flow Rate 1.5 GPM (5.7 L/MIN) At 60 PSI (ASME A112.18.1M/A112.18.1)

#### APPROVALS:

Meets or Exceeds The Following:

- \* ANSI/ASME A112.18.1M/A112.18.1
- \* NSF/ANSI 61 - Sec. 9
- \* NSF/ANSI 372
- \* IAPMO/cUPC
- \* CA AB1953

BL-240C  
Chrome Finish

BL-240SS  
Stainless Steel Finish

BL-200C  
Less Side Spray  
Chrome Finish

BL-200SS  
Less Side Spray  
Stainless Steel Finish

**CALIFORNIA:**  
**TEXAS:**  
**NEW YORK:**

**TEL: 866-532-8306**  
**TEL: 800-935-5456**  
**TEL: 800-431-2082**

**FAX: 866-532-8307**  
**FAX: 800-683-4247**  
**FAX: 800-640-2252**

Visit Our Web Site : [www.matco-norca.com](http://www.matco-norca.com)



NSF/ANSI 372  
NSF/ANSI 61-9

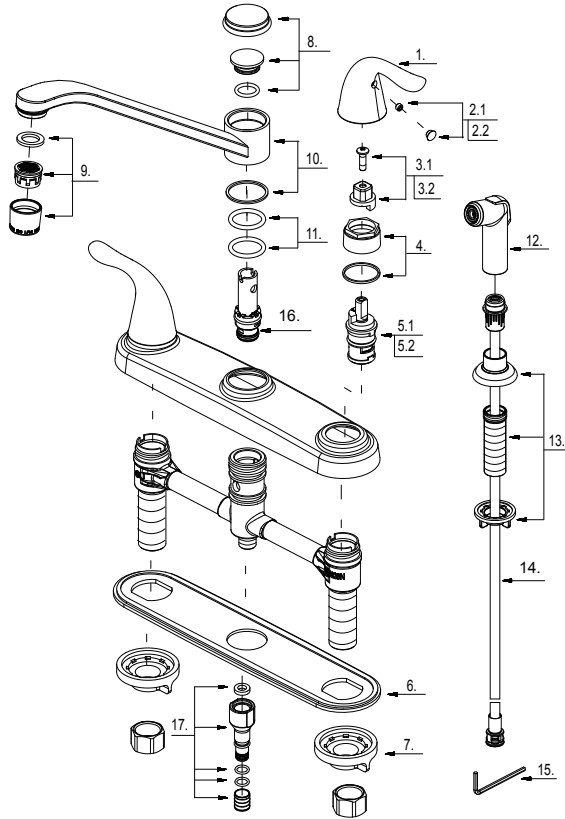


**BL-200C**       **BL-200SS**  
 **BL-240C**       **BL-240SS**

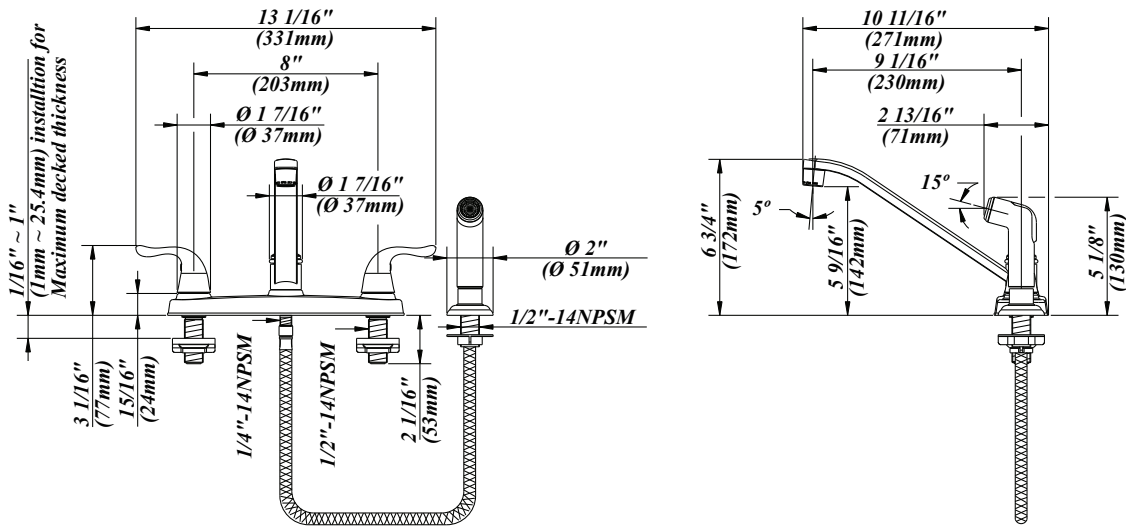


# 8" Two Handle Kitchen Faucet

No.	Name	Part No.
1	Metal Handle	A069115
2.1	Index Button-Cold	A603595C
2.2	Index Button-Hot	A603595H
3.1	Handle Adaptor-Cold	A66D574C
3.2	Handle Adaptor-Hot	A66D574H
4	Retainer Nut & Washer	A663631
5.1	Ceramic Disc Cartridge -Cold	A507104N
5.2	Ceramic Disc Cartridge -Hot	A507103N
6	Putty Plate	A011125
7	Lock Nut Set	A504023
8	Spout Trim Cap	A663163N
9	Aerator	A500871N-51
10	Spout Set	A666321N
11	O-Ring Set ( $\Phi 7/8"$ ID * $\Phi 1-1/8"$ OD)	A668000N
12	Side Spray	A503002N
13	Spray Holder Assembly (3-15/16" L)	A220008
14	Spray Hose	A512139N
15	Hex Wrench (H2.5 * 19 mm L * 53 mm L)	A031000NI
16	Spray Diverter w/Vacuum Breaker	A66G174N
17	Sealing Kit	A66G352N



# Product Spec Sheet



**CALIFORNIA:**  
**TEXAS:**  
**NEW YORK:**

**TEL: 866-532-8306**  
**TEL: 800-935-5456**  
**TEL: 800-431-2082**

**FAX: 866-532-8307**  
**FAX: 800-683-4247**  
**FAX: 800-640-2252**

Visit Our Web Site : [www.matco-norca.com](http://www.matco-norca.com)