

WIDE SPREAD LAVATORY FAUCET



Product Spec Sheet

FEATURES & BENEFITS

- Solid Brass Body
- Fits 6"-12" Centers
- 1/2"-14 NPS Inlet
- Metal Lever Handles
- ADA Compliant
- Drip-free Ceramic Cartridge
- Brass Pop-up Drain Assembly
- 100% Factory Pressure Tested Before Shipment

- * AE-995
Chrome Finish
- * AE-995S
Brushed Nickel Finish

Approvals: Meets or Exceeds The Following:

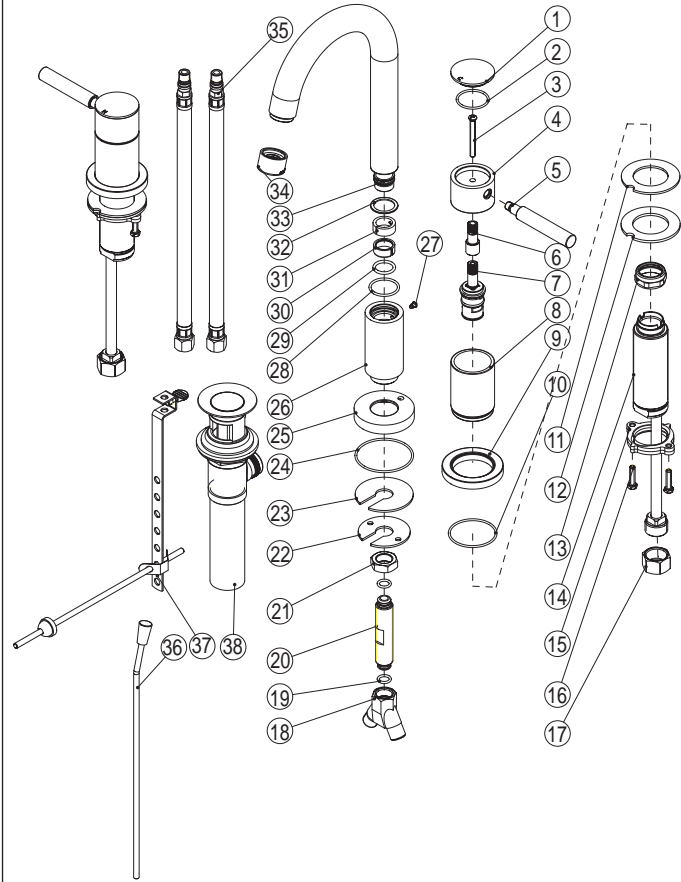
- * ANSI/ASME A112.18.1
- * CSA B125.1
- * IAPMO/UPC



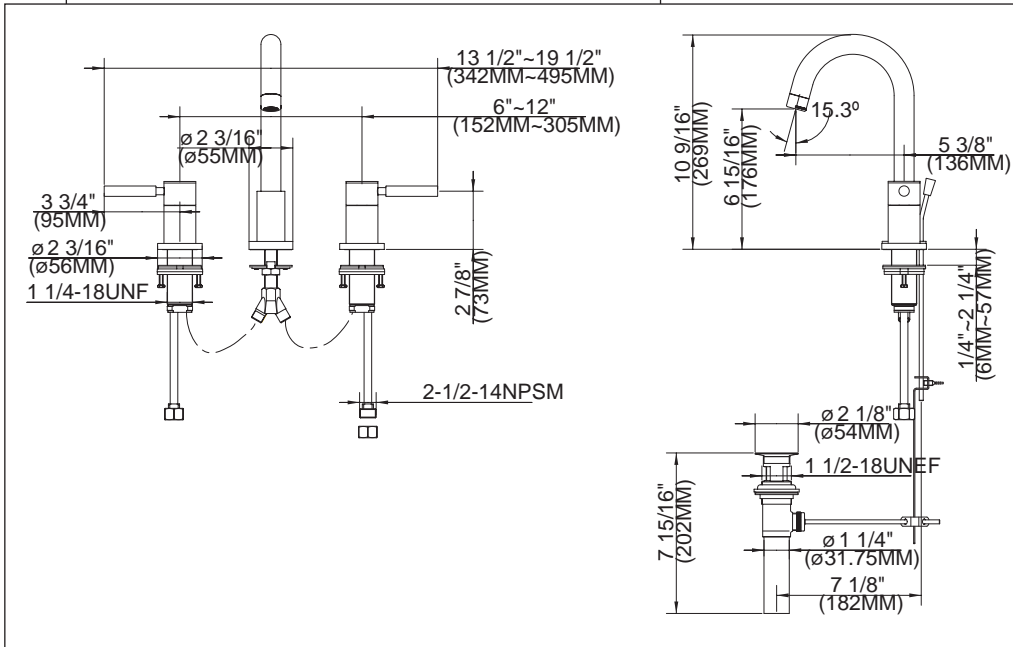
AE-995/AE-995S WIDE SPREAD LAVATORY FAUCET



No	Part Title	Material
1	Handle Cap	Brass
2	O-Ring	Rubber
3	Screw	Stainless Steel
4	Handle End	Brass
5	Handle	Brass
6	Extension Stem	Brass
7	Cartridge	Brass/Ceramic
8	Canopy	Brass
9	Handle Base	Brass
10	O-Ring	Rubber
11	Seal	Rubber
12	Washer	Stainless Steel
13	Retainer Nut	Brass
14	Body	Brass
15	Lock Nut	Brass
16	Screw	Stainless Steel
17	Lock Nut	Brass
18	Y-Adapter	Brass
19	O-Ring	Rubber
20	Shank	Brass
21	Lock Nut	Brass
22	Washer	Stainless Steel
23	Seal	Rubber
24	O-Ring	Rubber
25	Base	Brass
26	Body Assembly	Brass
27	Screw	Brass
28	O-Ring	Rubber
29	O-Ring	Rubber
30	Clip	Plastic
31	Clip	Plastic
32	Washer	Plastic
33	Spout Assembly	Brass
34	Aerator Assembly	Brass/Plastic
35	Connection Tube	Stainless Steel
36	Lift Rod	Brass
37	Ball Rod Assembly	Brass
38	Pop-up Assembly	Brass



Product Spec Sheet



Approvals:
Meets or Exceeds
The Following:
 * ANSI/ASME A112.18.1
 * CSA B125.1
 * IAPMO/UPC



BREWSTER, NY: P.O. BOX 27 Route 22 Brewster, NY 10509
HOUSTON, TX: 1150 Silber Road Houston, TX 77055
LA PALMA, CA: 5593 Fresca Drive La Palma, CA 90623

Visit Our Web Site : www.matco-norca.com