

AE-956/AE-956S

Single Handle Bar/Lavatory Faucet



SINGLE HANDLE BAR/LAVATORY FAUCET



Product Spec Sheet

FEATURES & BENEFITS

- Solid Brass Body
 - Single Hole Mounted
 - Drip-Free Ceramic Cartridge
 - Easy Single Lever Operation
 - ADA Complicant
 - 100% Factory Pressure Tested Before Shipment
- * AE-956
Chrome Finish
 - * AE-956S
Brushed Nickel Finish
 - * AE-9560RB
Oil Rubbed Bronze Finish

Approvals:
Meets or Exceeds The Following:

- * ANSI/ASME A112.18.1
- * CSA B125.1
- * ANSI/NSF 61 – Sec. 9
- * IAPMO/UPC



BREWSTER, NY: TEL: 800-431-2082
HOUSTON, TX: TEL: 800-935-5456
LA PALMA, CA: TEL: 866-532-8306

FAX: 800-640-2252
FAX: 800-683-4247
FAX: 866-832-8307

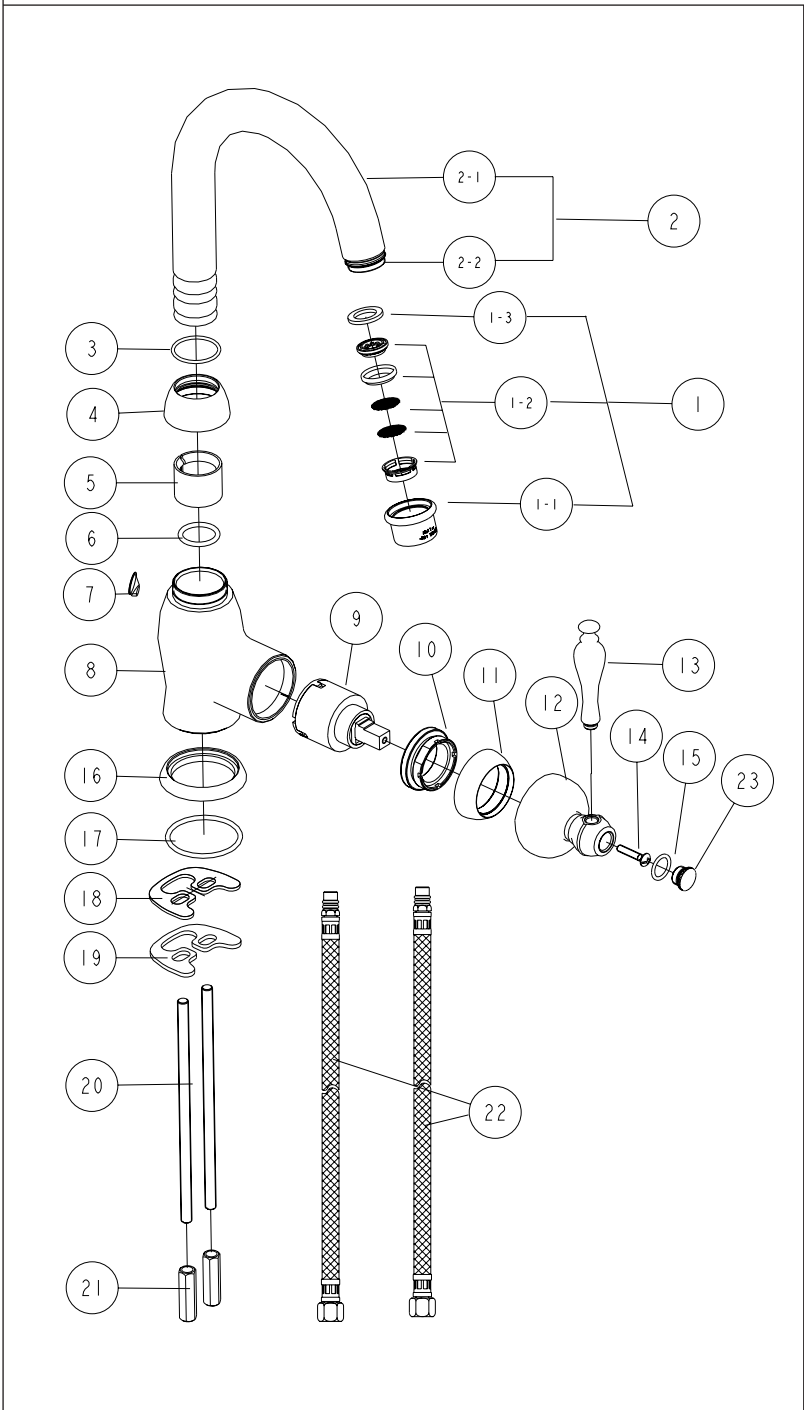
Visit Our Web Site : www.matco-norca.com

AE-956/AE-956S

Single Handle Bar/Lavatory Faucet



| No | Part Title | Material |
|----|-------------|-------------------------|
| 1 | Aerator | Plastic/Brass |
| 2 | Spout | Brass |
| 3 | O-Ring | Rubber |
| 4 | Sleeve | Brass |
| 5 | Clip | Resin |
| 6 | O-Ring | Rubber |
| 7 | Insert | Silicon |
| 8 | Body | Brass |
| 9 | Cartridge | Ceramic |
| 10 | Adjust Ring | Brass |
| 11 | Cap | Brass |
| 12 | Canopy | Brass |
| 13 | Handle | Brass |
| 14 | Screw | Steel |
| 15 | Washer | Plastic |
| 16 | Base | Brass |
| 17 | O-Ring | Rubber |
| 18 | Washer | Rubber |
| 19 | Washer | Steel |
| 20 | Thread Rod | Steel |
| 21 | Nut | Brass |
| 22 | Hose | Plastic/Stainless Steel |
| 23 | Cap | Brass |



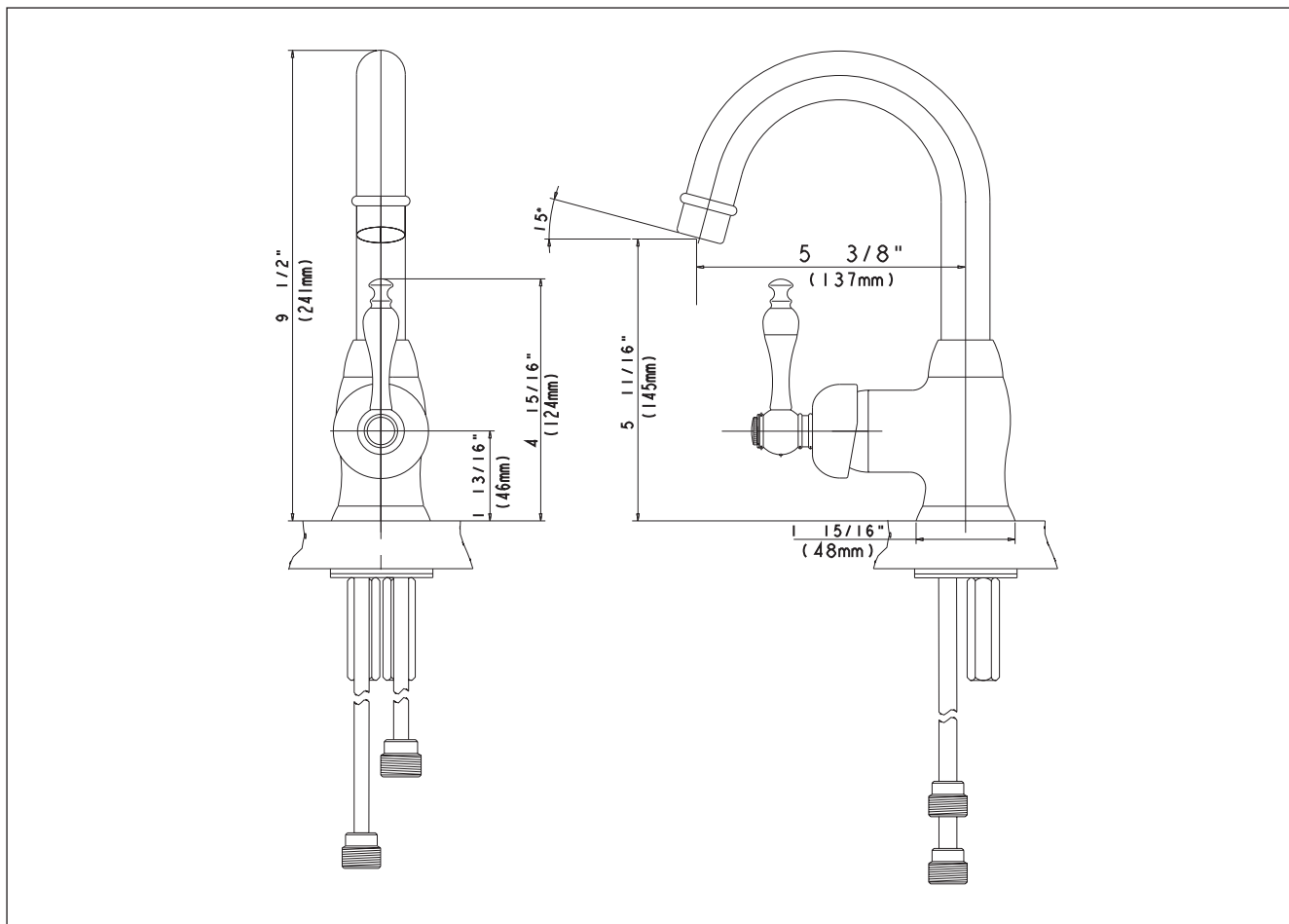
Product Spec Sheet



Approvals:
Meets or Exceeds The Following:

- * ANSI/ASME A112.18.1
- * CSA B125.1
- * ANSI/NSF 61 – Sec. 9
- * IAPMO/UPC

AE-956/AE-956S Single Handle Bar/Lavatory Faucet



Product Spec Sheet



Approvals:

Meets or Exceeds The Following:

- * ANSI/ASME A112.18.1
- * CSA B125.1
- * ANSI/NSF 61 – Sec. 9
- * IAPMO/UPC



BREWSTER, NY: P.O. BOX 27 Route 22 Brewster, NY 10509
HOUSTON, TX: 1150 Silber Road Houston, TX 77055
LA PALMA, CA: 5593 Fresca Drive La Palma, CA 90623

Visit Our Web Site : www.matco-norca.com