

KITCHEN FAUCET



Product Spec Sheet

FEATURES & BENEFITS

- Solid Brass Body
- Fits 8" Centers
- 1/2"-14 NPS Inlet
- Metal Lever Handles
- ADA Compliant
- Washerless Cartridge
- With Spray
- 100% Factory Pressure Tested Before Shipment

- * AE-366
Chrome Finish
- * AE-366S
Brushed Nickel Finish

Approvals: Meets or Exceeds The Following:

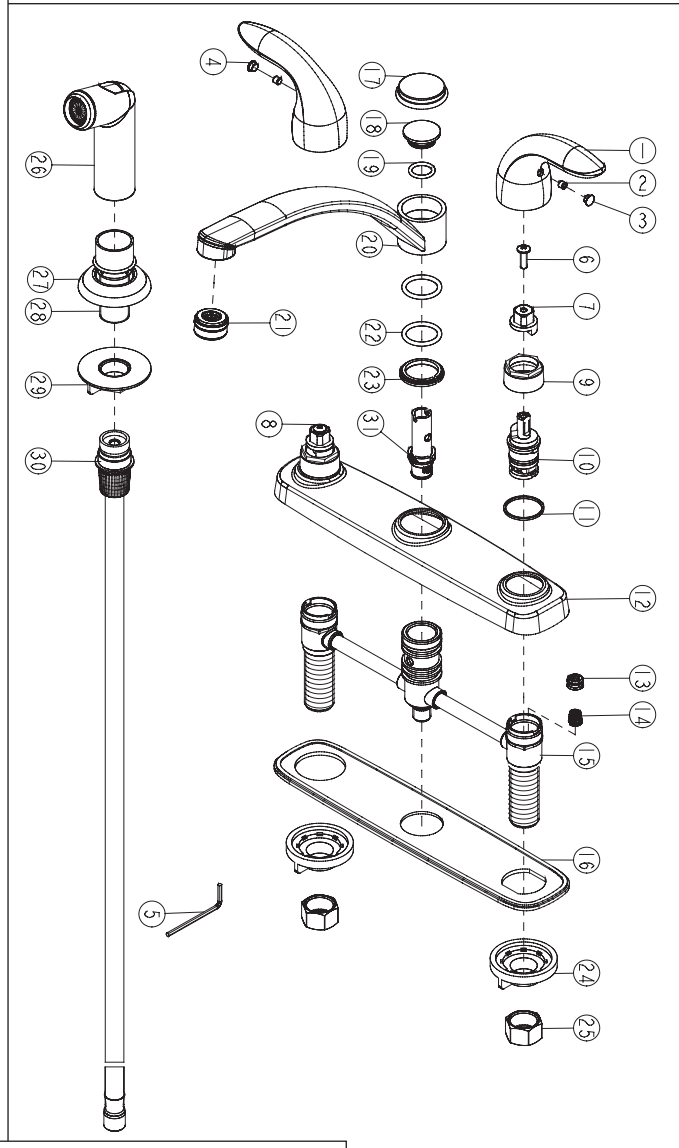
- * ANSI/ASME A112.18.1
- * CSA B125.1
- * IAPMO/UPC



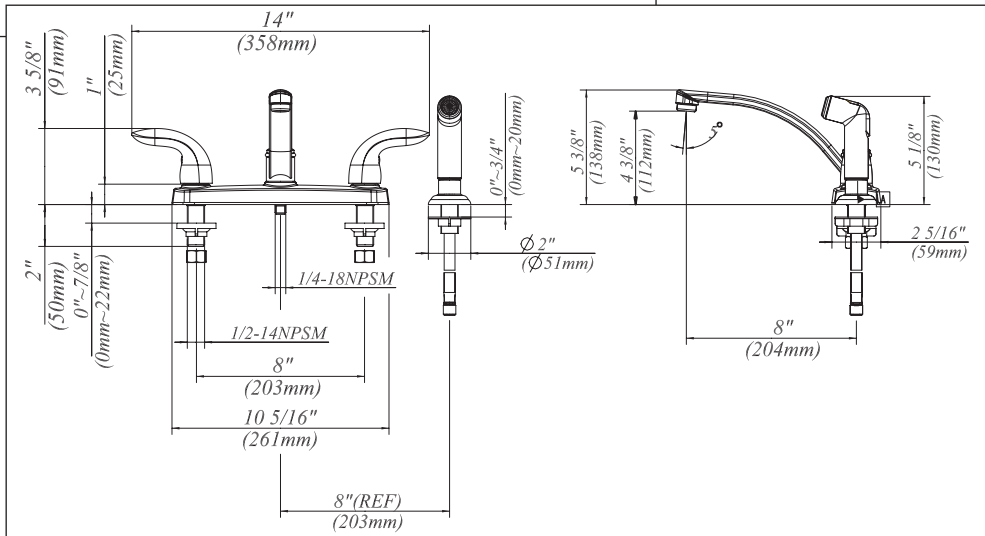
AE-366/AE-366S KITCHEN FAUCET



No	Part Title	Material
1	Handle	Zinc
2	Screw	Stainless Steel
3	Insert	Rubber
4	Insert	Rubber
5	Wrench	Iron
6	Screw	Brass
7	Extension Stem	Plastic+33%Fiberglass
8	Extension Stem	Plastic+33%Fiberglass
9	Retainer nut	Zinc
10	Cartridge	Brass/Ceramic
11	O-Ring	Plastic
12	Cover Plate	Zinc
13	Cone Wash	Rubber
14	Spring	Stainless Steel
15	Body Assembly	Brass
16	Bottom Plate	Plastic
17	Spout Cap	Zinc
18	Insert	Rubber
19	O-Ring	Rubber
20	Spout Assembly	Brass
21	Aerator	Brass / Plastic
22	O-Ring	Rubber
23	Clip	Plastic
24	Lock Nut	Plastic
25	Coupling Nut	Brass
26	Spray Head	Plastic
27	Spray Flange	Brass
28	Screw Stem	Plastic
29	Lock Nut	Plastic
30	Spray Hose	Plastic
31	Diverter Assembly	Plastic



Product Spec Sheet



Approvals:
Meets or Exceeds
The Following:
 * ANSI/ASME A112.18.1
 * CSA B125.1
 * IAPMO/UPC



BREWSTER, NY: P.O. BOX 27 Route 22 Brewster, NY 10509
HOUSTON, TX: 1150 Silber Road Houston, TX 77055
LA PALMA, CA: 5593 Fresca Drive La Palma, CA 90623

Visit Our Web Site : www.matco-norca.com