

AE-251LF/AE-251SLF



Pullout Kitchen Faucet



Product Spec Sheet

FEATURES & BENEFITS

- This Product Contains Less Than 0.25% Weighted Average Lead Content On Wetted Surfaces
- Ceramic Cartridge
- Metal Lever Handle
- Pullout Spray
- Water Saving Aerator
- Max Flow Rate: 2.2GPM at 60PSI
- 100% Factory Pressure Tested Before Shipment

AE-251LF
(Chrome Finish)

AE-251SLF
(Brushed Nickel Finish)

APPROVALS:

Meets or Exceeds The Following:

- * ANSI/ASME A112.18.1
- * CSA B125.1
- * ANSI/NSF 61 – Sec. 9
- * IAPMO/UPC
- * CA AB1953



BREWSTER, NY: TEL: 800-431-2082
HOUSTON, TX: TEL: 800-935-5456
LA PALMA, CA: TEL: 866-532-8306

FAX: 800-640-2252
FAX: 800-683-4247
FAX: 866-532-8307

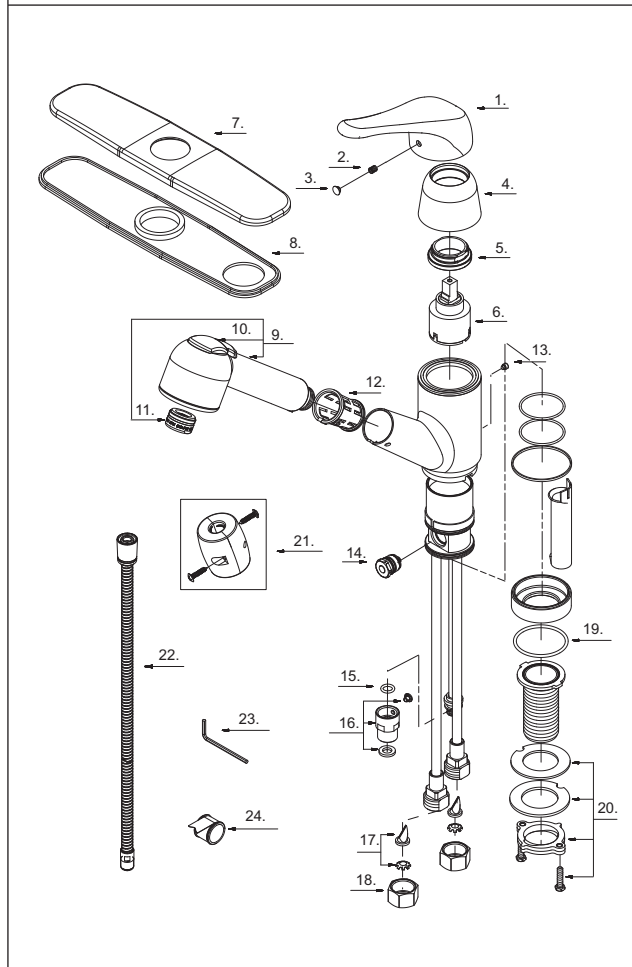
MATCO-NORCA

Visit Our Web Site : www.matco-norca.com

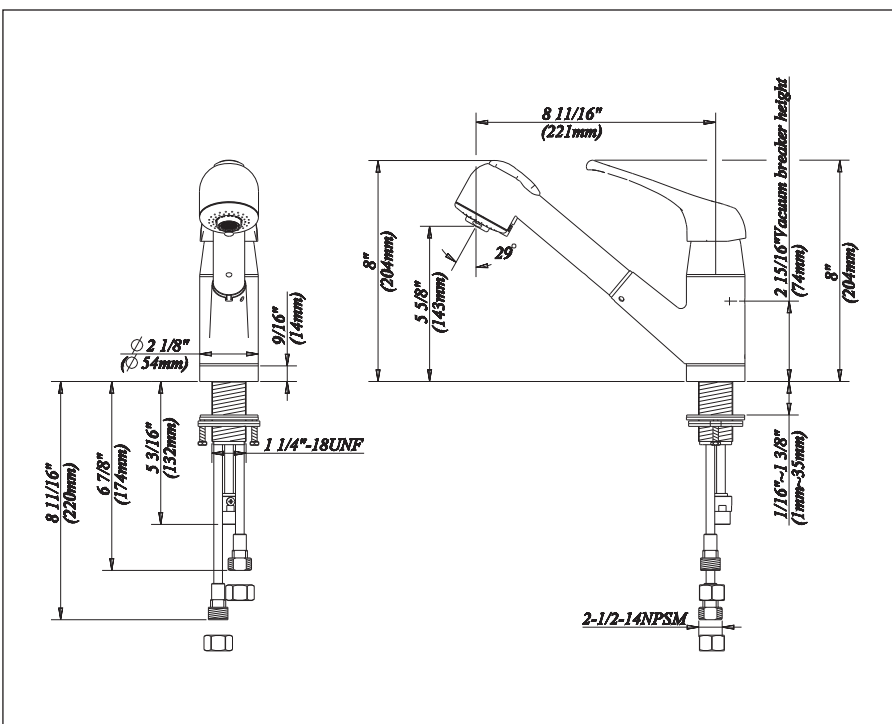
AE-251LF/AE-251SLF Pullout Kitchen Faucet



No.	Name	Material
1	Metal Handle	Zinc Alloy
2	Screw	Steel
3	Index Button-Cold/Hot	Plastic
4	Trim Cap	Plastic
5	Locking Nut	Steel
6	Ceramic Disc Cartridge	Ceramic&Brass
7	Cover Plate	Zinc
8	Putty Plate	Plastic
9	Hand Spray w/Check Valve	Brass&Plastic
10	Hand Spray Button	Rubber
11	Aerator	Brass&Plastic
12	Hose Guide	Plastic
13	Screw	Steel
14	Vacuum Breaker	Steel
15	O-Ring	Steel
16	Hose Adaptor Assembly	Steel
17	Back Flow Prevention Device	Brass
18	Coupling Nut	Brass
19	O-Ring	Steel
20	Mounting Hardware	Steel
21	Weight	Plastic
22	Spray Hose	Steel
23	Hex Wrench	Steel
24	Pipe Tape	Plastic



Product Spec Sheet



APPROVALS: Meets or Exceeds The Following:

- * ANSI/ASME A112.18.1
- * CSA B125.1
- * ANSI/NSF 61 – Sec. 9
- * IAPMO/UPC
- * CA AB1953

BREWSTER, NY: P.O. BOX 27 Route 22 Brewster, NY 10509
HOUSTON, TX: 1150 Silber Road Houston, TX 77055
LA PALMA, CA: 5593 Fresca Drive La Palma, CA 90623

Visit Our Web Site : www.matco-norca.com