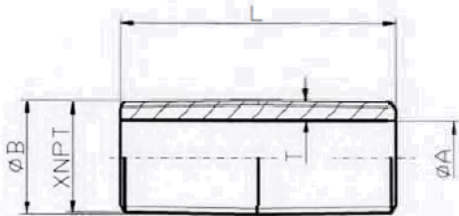


Schedule 40 Welded Steel Pipe Nipples Black and Galvanized

Specification Sheet

FEATURES:

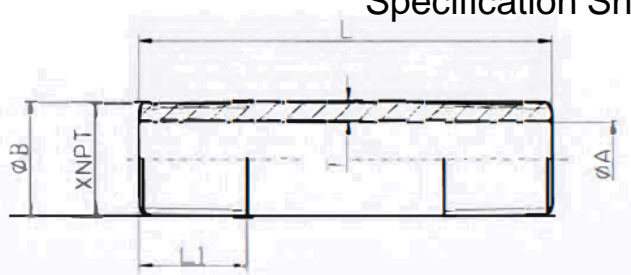
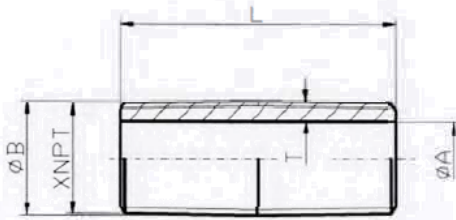
Material: ASTM A53/A53M, ERW type, Grade B
 Dimensions: ASTM A733
 Threads: ASME B1.20.1
 Approvals: NSF61, NSF372 (Galvanized Only)
 Availability: Stocked from 1/8" through 8" diameters



Part #	Size	A	B	L	L1	T (min)
ZNB00CL	1/8XCLOSE	0.269	0.405	3/4	----	0.060
ZNB00112	1/8X1-1/2	0.269	0.405	1-1/2	0.392	0.060
ZNB002	1/8X2	0.269	0.405	2	0.392	0.060
ZNB00212	1/8X2-1/2	0.269	0.405	2-1/2	0.392	0.060
ZNB003	1/8X3	0.269	0.405	3	0.392	0.060
ZNB00312	1/8X3-1/2	0.269	0.405	3-1/2	0.392	0.060
ZNB004	1/8X4	0.269	0.405	4	0.392	0.060
ZNB00412	1/8X4-1/2	0.269	0.405	4-1/2	0.392	0.060
ZNB005	1/8X5	0.269	0.405	5	0.392	0.060
ZNB00512	1/8X5-1/2	0.269	0.405	5-1/2	0.392	0.060
ZNB006	1/8X6	0.269	0.405	6	0.392	0.060
ZNB007	1/8X7	0.269	0.405	7	0.392	0.060
ZNB008	1/8X8	0.269	0.405	8	0.392	0.060
ZNB009	1/8X9	0.269	0.405	9	0.392	0.060
ZNB0010	1/8X10	0.269	0.405	10	0.392	0.060
ZNB0012	1/8X12	0.269	0.405	12	0.392	0.060
ZNB01CL	1/4XCLOSE	0.364	0.540	7/8	----	0.077
ZNB01112	1/4X1-1/2	0.364	0.540	1-1/2	0.595	0.077
ZNB012	1/4X2	0.364	0.540	2	0.595	0.077
ZNB01212	1/4X2-1/2	0.364	0.540	2-1/2	0.595	0.077
ZNB013	1/4X3	0.364	0.540	3	0.595	0.077
ZNB01312	1/4X3-1/2	0.364	0.540	3-1/2	0.595	0.077
ZNB014	1/4X4	0.364	0.540	4	0.595	0.077
ZNB01412	1/4X4-1/2	0.364	0.540	4-1/2	0.595	0.077
ZNB015	1/4X5	0.364	0.540	5	0.595	0.077
ZNB01512	1/4X5-1/2	0.364	0.540	5-1/2	0.595	0.077
ZNB016	1/4X6	0.364	0.540	6	0.595	0.077
ZNB01612	1/4X6-1/2	0.364	0.540	6-1/2	0.595	0.077
ZNB017	1/4X7	0.364	0.540	7	0.595	0.077
ZNB018	1/4X8	0.364	0.540	8	0.595	0.077

Part #	Size	A	B	L	L1	T (min)
ZNB019	1/4X9	0.364	0.540	9	0.595	0.077
ZNB0110	1/4X10	0.364	0.540	10	0.595	0.077
ZNB0111	1/4X11	0.364	0.540	11	0.595	0.077
ZNB0112	1/4X12	0.364	0.540	12	0.595	0.077
ZNB02CL	3/8XCLOSE	0.493	0.675	1	----	0.080
ZNB02112	3/8X1-1/2	0.493	0.675	1-1/2	0.601	0.080
ZNB022	3/8X2	0.493	0.675	2	0.601	0.080
ZNB02212	3/8X2-1/2	0.493	0.675	2-1/2	0.601	0.080
ZNB023	3/8X3	0.493	0.675	3	0.601	0.080
ZNB02312	3/8X3-1/2	0.493	0.675	3-1/2	0.601	0.080
ZNB024	3/8X4	0.493	0.675	4	0.601	0.080
ZNB02412	3/8X4-1/2	0.493	0.675	4-1/2	0.601	0.080
ZNB025	3/8X5	0.493	0.675	5	0.601	0.080
ZNB02512	3/8X5-1/2	0.493	0.675	5-1/2	0.601	0.080
ZNB026	3/8X6	0.493	0.675	6	0.601	0.080
ZNB02612	3/8X6-1/2	0.493	0.675	6-1/2	0.601	0.080
ZNB027	3/8X7	0.493	0.675	7	0.601	0.080
ZNB028	3/8X8	0.493	0.675	8	0.601	0.080
ZNB029	3/8X9	0.493	0.675	9	0.601	0.080
ZNB0210	3/8X10	0.493	0.675	10	0.601	0.080
ZNB0211	3/8X11	0.493	0.675	11	0.601	0.080
ZNB0212	3/8X12	0.493	0.675	12	0.601	0.080
ZNB03CL	1/2XCLOSE	0.622	0.840	1-1/8	----	0.095
ZNB03112	1/2X1-1/2	0.622	0.840	1-1/2	0.669	0.095
ZNB03114	1/2X1-1/4	0.622	0.840	1-1/4	0.782	0.095
ZNB03134	1/2X1-3/4	0.622	0.840	1-3/4	0.782	0.095
ZNB032	1/2X2	0.622	0.840	2	0.782	0.095
ZNB03212	1/2X2-1/2	0.622	0.840	2-1/2	0.782	0.095
ZNB033	1/2X3	0.622	0.840	3	0.782	0.095
ZNB03312	1/2X3-1/2	0.622	0.840	3-1/2	0.782	0.095

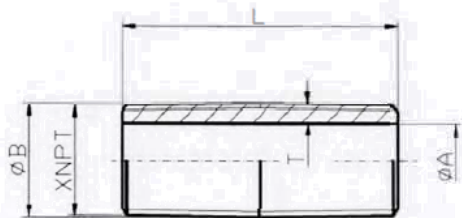
Schedule 40 Welded Steel Pipe Nipples Black and Galvanized Specification Sheet



Part #	Size	A	B	L	L1	T (min)
ZNB034	1/2X4	0.622	0.840	4	0.782	0.095
ZNB03412	1/2X4	0.622	0.840	4-1/2	0.782	0.095
ZNB035	1/2X5	0.622	0.840	5	0.782	0.095
ZNB03512	1/2X5-1/2	0.622	0.840	5-1/2	0.782	0.095
ZNB036	1/2X6	0.622	0.840	6	0.782	0.095
ZNB03612	1/2X6-1/2	0.622	0.840	6-1/2	0.782	0.095
ZNB037	1/2X7	0.622	0.840	7	0.782	0.095
ZNB038	1/2X8	0.622	0.840	8	0.782	0.095
ZNB03812	1/2X8-1/2	0.622	0.840	8-1/2	0.782	0.095
ZNB039	1/2X9	0.622	0.840	9	0.782	0.095
ZNB03912	1/2X9-1/2	0.622	0.840	9-1/2	0.782	0.095
ZNB0310	1/2X10	0.622	0.840	10	0.782	0.095
ZNB031012	1/2X10-1/2	0.622	0.840	10-1/2	0.782	0.095
ZNB0311	1/2X11	0.622	0.840	11	0.782	0.095
ZNB031112	1/2X11-1/2	0.622	0.840	11-1/2	0.782	0.095
ZNB0312	1/2X12	0.622	0.840	12	0.782	0.095
ZNB04CL	3/4XCLOSE	0.824	1.050	1-3/8	----	0.099
ZNB041	3/4X1	0.824	1.050	1	0.794	0.099
ZNB04112	3/4X1-1/2	0.824	1.050	1-1/2	0.669	0.099
ZNB042	3/4X2	0.824	1.050	2	0.794	0.099
ZNB04212	3/4X2-1/2	0.824	1.050	2-1/2	0.794	0.099
ZNB043	3/4X3	0.824	1.050	3	0.794	0.099
ZNB04312	3/4X3-1/2	0.824	1.050	3-1/2	0.794	0.099
ZNB044	3/4X4	0.824	1.050	4	0.794	0.099
ZNB04412	3/4X4-1/2	0.824	1.050	4-1/2	0.794	0.099
ZNB045	3/4X5	0.824	1.050	5	0.794	0.099
ZNB04512	3/4X5-1/2	0.824	1.050	5-1/2	0.794	0.099
ZNB046	3/4X6	0.824	1.050	6	0.794	0.099
ZNB04612	3/4X6-1/2	0.824	1.050	6-1/2	0.794	0.099
ZNB047	3/4X7	0.824	1.050	7	0.794	0.099
ZNB04712	3/4X7-1/2	0.824	1.050	7-1/2	0.794	0.099
ZNB048	3/4X8	0.824	1.050	8	0.794	0.099
ZNB049	3/4X9	0.824	1.050	9	0.794	0.099
ZNB04912	3/4X9-1/2	0.824	1.050	9-1/2	0.794	0.099
ZNB0410	3/4X10	0.824	1.050	10	0.794	0.099
ZNB0411	3/4X11	0.824	1.050	11	0.794	0.099
ZNB0412	3/4X12	0.824	1.050	12	0.794	0.099

Part #	Size	A	B	L	L1	T (min)
ZNB05CL	1XCLOSE	1.049	1.315	1-1/2	----	0.116
ZNB05134	1X1-3/4	1.049	1.315	1-3/4	0.985	0.116
ZNB052	1X2	1.049	1.315	2	0.906	0.116
ZNB05212	1X2-1/2	1.049	1.315	2-1/2	0.985	0.116
ZNB053	1X3	1.049	1.315	3	0.985	0.116
ZNB05312	1X3-1/2	1.049	1.315	3-1/2	0.985	0.116
ZNB054	1X4	1.049	1.315	4	0.985	0.116
ZNB05412	1X4-1/2	1.049	1.315	4-1/2	0.985	0.116
ZNB055	1X5	1.049	1.315	5	0.985	0.116
ZNB05512	1X5-1/2	1.049	1.315	5-1/2	0.985	0.116
ZNB056	1X6	1.049	1.315	6	0.985	0.116
ZNB05612	1X6-1/2	1.049	1.315	6-1/2	0.985	0.116
ZNB057	1X7	1.049	1.315	7	0.985	0.116
ZNB05712	1X7-1/2	1.049	1.315	7-1/2	0.985	0.116
ZNB058	1X8	1.049	1.315	8	0.985	0.116
ZNB05812	1X8-1/2	1.049	1.315	8-1/2	0.985	0.116
ZNB059	1X9	1.049	1.315	9	0.985	0.116
ZNB05912	1X9-1/2	1.049	1.315	9-1/2	0.985	0.116
ZNB0510	1X10	1.049	1.315	10	0.985	0.116
ZNB0511	1X11	1.049	1.315	11	0.985	0.116
ZNB0512	1X12	1.049	1.315	12	0.985	0.116
ZNB06CL	11/4XCLOSE	1.380	1.660	1-5/8	----	0.123
ZNB062	11/4X2	1.380	1.660	2	0.906	0.123
ZNB06212	11/4X2-1/2	1.380	1.660	2-1/2	1.009	0.123
ZNB063	11/4X3	1.380	1.660	3	1.009	0.123
ZNB06312	11/4X3-1/2	1.380	1.660	3-1/2	1.009	0.123
ZNB06334	11/4X3-3/4	1.380	1.660	3-3/4	1.009	0.123
ZNB064	11/4X4	1.380	1.660	4	1.009	0.123
ZNB06412	11/4X4-1/2	1.380	1.660	4-1/2	1.009	0.123
ZNB065	11/4X5	1.380	1.660	5	1.009	0.123
ZNB06512	11/4X5-1/2	1.380	1.660	5-1/2	1.009	0.123
ZNB066	11/4X6	1.380	1.660	6	1.009	0.123
ZNB06612	11/4X6-1/2	1.380	1.660	6-1/2	1.009	0.123
ZNB067	11/4X7	1.380	1.660	7	1.009	0.123
ZNB06712	11/4X7-1/2	1.380	1.660	7-1/2	1.009	0.123
ZNB068	11/4X8	1.380	1.660	8	1.009	0.123
ZNB06812	11/4X8-1/2	1.380	1.660	8-1/2	1.009	0.123

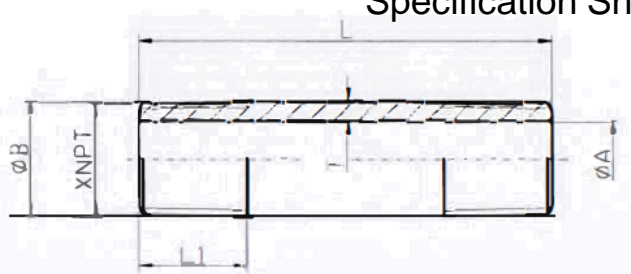
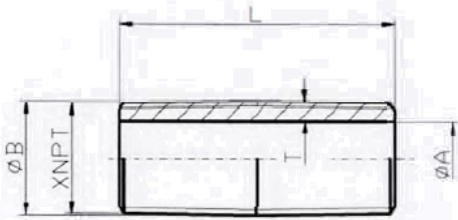
Schedule 40 Welded Steel Pipe Nipples Black and Galvanized Specification Sheet



Part #	Size	A	B	L	L1	T (min)
ZNB069	11/4X9	1.380	1.660	9	1.009	0.123
ZNB0610	11/4X10	1.380	1.660	10	1.009	0.123
ZNB061012	11/4X10-1/2	1.380	1.660	10-1/2	1.009	0.123
ZNB0611	11/4X11	1.380	1.660	11	1.009	0.123
ZNB0612	11/4X12	1.380	1.660	12	1.009	0.123
ZNB07CL	11/2XCLOSE	1.610	1.900	13/4	----	0.127
ZNB072	11/2X2	1.610	1.900	2	0.906	0.127
ZNB07212	11/2X2-1/2	1.610	1.900	2-1/2	1.025	0.127
ZNB073	11/2X3	1.610	1.900	3	1.025	0.127
ZNB07312	11/2X3-1/2	1.610	1.900	3-1/2	1.025	0.127
ZNB074	11/2X4	1.610	1.900	4	1.025	0.127
ZNB07412	11/2X4-1/2	1.610	1.900	4-1/2	1.025	0.127
ZNB075	11/2X5	1.610	1.900	5	1.025	0.127
ZNB07512	11/2X5-1/2	1.610	1.900	5-1/2	1.025	0.127
ZNB076	11/2X6	1.610	1.900	6	1.025	0.127
ZNB077	11/2X7	1.610	1.900	7	1.025	0.127
ZNB078	11/2X8	1.610	1.900	8	1.025	0.127
ZNB079	11/2X9	1.610	1.900	9	1.025	0.127
ZNB0710	11/2X10	1.610	1.900	10	1.025	0.127
ZNB0711	11/2X11	1.610	1.900	11	1.025	0.127
ZNB0712	11/2X12	1.610	1.900	12	1.025	0.127
ZNB08CL	2XCLOSE	2.067	2.375	2	----	0.135
ZNB08212	2X2-1/2	2.067	2.375	2-1/2	1.058	0.135
ZNB083	2X3	2.067	2.375	3	1.058	0.135
ZNB08312	2X3-1/2	2.067	2.375	3-1/2	1.058	0.135
ZNB084	2X4	2.067	2.375	4	1.058	0.135
ZNB08412	2X4-1/2	2.067	2.375	4-1/2	1.058	0.135
ZNB085	2X5	2.067	2.375	5	1.058	0.135
ZNB08512	2X5-1/2	2.067	2.375	5-1/2	1.058	0.135
ZNB086	2X6	2.067	2.375	6	1.058	0.135
ZNB08612	2X6-1/2	2.067	2.375	6-1/2	1.058	0.135
ZNB087	2X7	2.067	2.375	7	1.058	0.135
ZNB088	2X8	2.067	2.375	8	1.058	0.135
ZNB089	2X9	2.067	2.375	9	1.058	0.135
ZNB0810	2X10	2.067	2.375	10	1.058	0.135
ZNB0811	2X11	2.067	2.375	11	1.058	0.135
ZNB0812	2X12	2.067	2.375	12	1.058	0.135

Part #	Size	A	B	L	L1	T (min)
ZNB09CL	21/2XCLOSE	2.469	2.875	2-1/2	----	0.178
ZNB093	21/2X3	2.469	2.875	3	1.181	0.178
ZNB09312	21/2X3-1/2	2.469	2.875	3-1/2	1.571	0.178
ZNB094	21/2X4	2.469	2.875	4	1.571	0.178
ZNB09412	21/2X4-1/2	2.469	2.875	4-1/2	1.571	0.178
ZNB095	21/2X5	2.469	2.875	5	1571	0.178
ZNB09512	21/2X5-1/2	2.469	2.875	5-1/2	1.571	0.178
ZNB096	21/2X6	2.469	2.875	6	1.571	0.178
ZNB09612	21/2X6-1/2	2.469	2.875	6-1/2	1.571	0.178
ZNB097	21/2X7	2.469	2.875	7	1.571	0.178
ZNB098	21/2X8	2.469	2.875	8	1.571	0.178
ZNB099	21/2X9	2.469	2.875	9	1.571	0.178
ZNB0910	21/2X10	2.469	2.875	10	1.571	0.178
ZNB0911	21/2X11	2.469	2.875	11	1571	0.178
ZNB0912	21/2X12	2.469	2.875	12	1.571	0.178
ZNB10CL	3XCLOSE	3.068	3.500	2-5/8	----	0.189
ZNB103	3X3	3.068	3.500	3	1.181	0.189
ZNB10312	3X3-1/2	3.068	3.500	3-1/2	1.634	0.189
ZNB104	3X4	3.068	3.500	4	1.634	0.189
ZNB10412	3X4-1/2	3.068	3.500	4-1/2	1.634	0.189
ZNB10434	3X4-3/4	3.068	3.500	4-3/4	1.634	0.189
ZNB105	3X5	3.068	3.500	5	1.634	0.189
ZNB10512	3X5-1/2	3.068	3.500	5-1/2	1.634	0.189
ZNB106	3X6	3.068	3.500	6	1.634	0.189
ZNB107	3X7	3.068	3.500	7	1.634	0.189
ZNB108	3X8	3.068	3.500	8	1.634	0.189
ZNB109	3X9	3.068	3.500	9	1.634	0.189
ZNB1010	3X10	3.068	3.500	10	1.634	0.189
ZNB1011	3X11	3.068	3.500	11	1.634	0.189
ZNB1012	3X12	3.068	3.500	12	1.634	0.189
ZNB11CL	4XCLOSE	4.026	4.500	2-7/8	----	0.207
ZNB114	4X4	4.026	4.500	4	1.734	0.207
ZNB11412	4X4-1/2	4.026	4.500	4-1/2	1.734	0.207
ZNB115	4X5	4.026	4.500	5	1.734	0.207
ZNB11512	4X5-1/2	4.026	4.500	5-1/2	1.734	0.207
ZNB116	4X6	4.026	4.500	6	1.734	0.207
ZNB117	4X7	4.026	4.500	7	1734	0.207

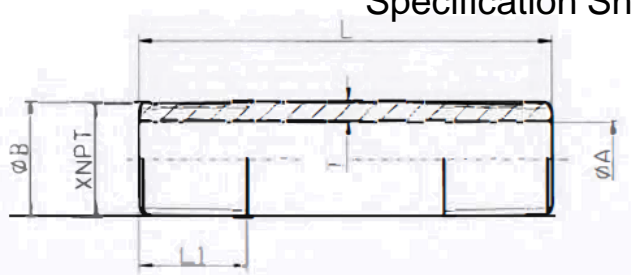
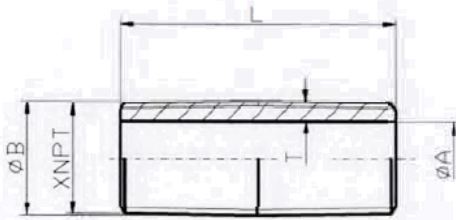
Schedule 40 Welded Steel Pipe Nipples Black and Galvanized Specification Sheet



Part #	Size	A	B	L	L1	T (min)
ZNB118	4X8	4.026	4.500	8	1.734	0.207
ZNB119	4X9	4.026	4.500	9	1.734	0.207
ZNB1110	4X10	4.026	4.500	10	1.734	0.207
ZNB1111	4X11	4.026	4.500	11	1.734	0.207
ZNB1112	4X12	4.026	4.500	12	1.734	0.207
ZNB12CL	5XCLOSE	5.047	5.563	3	----	0.226
ZNB124	5X4	5.047	5.563	4	1.840	0.226
ZNB125	5X5	5.047	5.563	5	1.840	0.226
ZNB12512	5X5-1/2	5.047	5.563	5-1/2	1.840	0.226
ZNB126	5X6	5.047	5.563	6	1.840	0.226
ZNB128	5X8	5.047	5.563	8	1.840	0.226
ZNB1210	5X10	5.047	5.563	10	1.840	0.226
ZNB1212	5X12	5.047	5.563	12	1.840	0.226
ZNB13CL	6XCLOSE	6.065	6.625	3-1/8	----	0.245
ZNB134	6X4	6.065	6.625	4	1.772	0.245
ZNB135	6X5	6.065	6.625	5	1.946	0.245
ZNB136	6X6	6.065	6.625	6	1.946	0.245
ZNB137	6X7	6.065	6.625	7	1.946	0.245
ZNB138	6X8	6.065	6.625	8	1.946	0.245
ZNB139	6X9	6.065	6.625	9	1.946	0.245
ZNB1310	6X10	6.065	6.625	10	1.946	0.245
ZNB1312	6X12	6.065	6.625	12	1.946	0.245
ZNB14CL	8XCLOSE	7.981	8.625	2-1/2	----	0.282
ZNB146	8X6	7.981	8.625	6	2.146	0.282
ZNB148	8X8	7.981	8.625	8	2.146	0.282
ZNB1410	8X10	7.981	8.625	10	2.146	0.282
ZNB1412	8X12	7.981	8.625	12	2.146	0.282

Part #	Size	A	B	L	L1	T (min)
ZNG00CL	1/8XCLOSE	0.269	0.405	3/4	----	0.060
ZNG00112	1/8X1-1/2	0.269	0.405	1-1/2	0.392	0.060
ZNG002	1/8X2	0.269	0.405	2	0.392	0.060
ZNG00212	1/8X2-1/2	0.269	0.405	2-1/2	0.392	0.060
ZNG003	1/8X3	0.269	0.405	3	0.392	0.060
ZNG00312	1/8X3-1/2	0.269	0.405	3-1/2	0.392	0.060
ZNG004	1/8X4	0.269	0.405	4	0.392	0.060
ZNG00412	1/8X4-1/2	0.269	0.405	4-1/2	0.392	0.060
ZNG005	1/8X5	0.269	0.405	5	0.392	0.060
ZNG00512	1/8X5-1/2	0.269	0.405	5-1/2	0.392	0.060
ZNG006	1/8X6	0.269	0.405	6	0.392	0.060
ZNG007	1/8X7	0.269	0.405	7	0.392	0.060
ZNG008	1/8X8	0.269	0.405	8	0.392	0.060
ZNG009	1/8X9	0.269	0.405	9	0.392	0.060
ZNG0010	1/8X10	0.269	0.405	10	0.392	0.060
ZNG0011	1/8X11	0.269	0.405	11	0.392	0.060
ZNG0012	1/8X12	0.269	0.405	12	0.392	0.060
ZNG01CL	1/4XCLOSE	0.364	0.540	7/8	----	0.077
ZNG011	1/4X1	0.364	0.540	1	0.595	0.077
ZNG01112	1/4X1-1/2	0.364	0.540	1-1/2	0.595	0.077
ZNG012	1/4X2	0.364	0.540	2	0.595	0.077
ZNG01212	1/4X2-1/2	0.364	0.540	2-1/2	0.595	0.077
ZNG013	1/4X3	0.364	0.540	3	0.595	0.077
ZNG01312	1/4X3-1/2	0.364	0.540	3-1/2	0.595	0.077
ZNG014	1/4X4	0.364	0.540	4	0.595	0.077
ZNG01412	1/4X4-1/2	0.364	0.540	4-1/2	0.595	0.077
ZNG015	1/4X5	0.364	0.540	5	0.595	0.077
ZNG01512	1/4X5-1/2	0.364	0.540	5-1/2	0.595	0.077
ZNG016	1/4X6	0.364	0.540	6	0.595	0.077
ZNG017	1/4X7	0.364	0.540	7	0.595	0.077
ZNG018	1/4X8	0.364	0.540	8	0.595	0.077
ZNG019	1/4X9	0.364	0.540	9	0.595	0.077
ZNG0110	1/4X10	0.364	0.540	10	0.595	0.077
ZNG0111	1/4X11	0.364	0.540	11	0.595	0.077
ZNG0112	1/4X12	0.364	0.540	12	0.595	0.077
ZNG02CL	3/8XCLOSE	0.493	0.675	1	----	0.080
ZNG02112	3/8X1-1/2	0.493	0.675	1-1/2	0.601	0.080

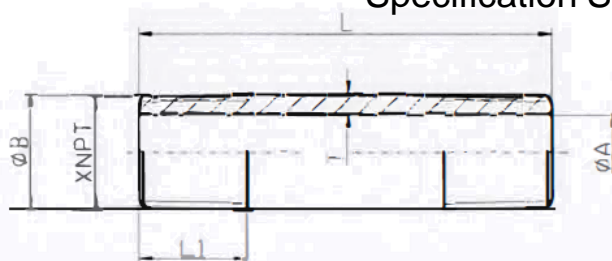
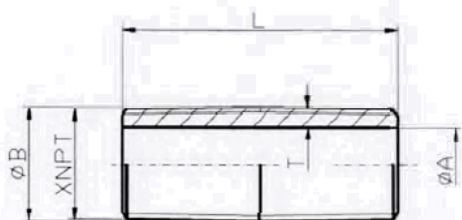
Schedule 40 Welded Steel Pipe Nipples Black and Galvanized Specification Sheet



Part #	Size	A	B	L	L1	T (min)
ZNG022	3/8X2	0.493	0.675	2	0.601	0.080
ZNG02212	3/8X2-1/2	0.493	0.675	2-1/2	0.601	0.080
ZNG023	3/8X3	0.493	0.675	3	0.601	0.080
ZNG02312	3/8X3-1/2	0.493	0.675	3-1/2	0.601	0.080
ZNG024	3/8X4	0.493	0.675	4	0.601	0.080
ZNG02412	3/8X4-1/2	0.493	0.675	4-1/2	0.601	0.080
ZNG025	3/8X5	0.493	0.675	5	0.601	0.080
ZNG02512	3/8X5-1/2	0.493	0.675	5-1/2	0.601	0.080
ZNG026	3/8X6	0.493	0.675	6	0.601	0.080
ZNG027	3/8X7	0.493	0.675	7	0.601	0.080
ZNG028	3/8X8	0.493	0.675	8	0.601	0.080
ZNG029	3/8X9	0.493	0.675	9	0.601	0.080
ZNG0210	3/8X10	0.493	0.675	10	0.601	0.080
ZNG0211	3/8X11	0.493	0.675	11	0.601	0.080
ZNG0212	3/8X12	0.493	0.675	12	0.601	0.080
ZNG03CL	1/2XCLOSE	0.622	0.840	1-1/8	----	0.095
ZNG03112	1/2X1-1/2	0.622	0.840	1-1/2	0.669	0.095
ZNG032	1/2X2	0.622	0.840	2	0.782	0.095
ZNG03212	1/2X2-1/2	0.622	0.840	2-1/2	0.782	0.095
ZNG033	1/2X3	0.622	0.840	3	0.782	0.095
ZNG03312	1/2X3-1/2	0.622	0.840	3-1/2	0.782	0.095
ZNG034	1/2X4	0.622	0.840	4	0.782	0.095
ZNG03412	1/2X4-1/2	0.622	0.840	4-1/2	0.782	0.095
ZNG035	1/2X5	0.622	0.840	5	0.782	0.095
ZNG03512	1/2X5-1/2	0.622	0.840	5-1/2	0.782	0.095
ZNG036	1/2X6	0.622	0.840	6	0.782	0.095
ZNG03612	1/2X6-1/2	0.622	0.840	6-1/2	0.782	0.095
ZNG037	1/2X7	0.622	0.840	7	0.782	0.095
ZNG03712	1/2X7-1/2	0.622	0.840	7-1/2	0.782	0.095
ZNG038	1/2X8	0.622	0.840	8	0.782	0.095
ZNG03812	1/2X8-1/2	0.622	0.840	8-1/2	0.782	0.095
ZNG039	1/2X9	0.622	0.840	9	0.782	0.095
ZNG03912	1/2X9-1/2	0.622	0.840	9-1/2	0.782	0.095
ZNG0310	1/2X10	0.622	0.840	10	0.782	0.095
ZNG0311	1/2X11	0.622	0.840	11	0.782	0.095
ZNG031112	1/2X11-1/2	0.622	0.840	11-1/2	0.782	0.095
ZNG0312	1/2X12	0.622	0.840	12	0.782	0.095

Part #	Size	A	B	L	L1	T (min)
ZNG04CL	3/4XCLOSE	0.824	1.050	1-3/8	----	0.099
ZNG04112	3/4X1-1/2	0.824	1.050	1-1/2	0.796	0.099
ZNG042	3/4X2	0.824	1.050	2	0.796	0.099
ZNG04212	3/4X2-1/2	0.824	1.050	2-1/2	0.796	0.099
ZNG043	3/4X3	0.824	1.050	3	0.796	0.099
ZNG04312	3/4X3-1/2	0.824	1.050	3-1/2	0.796	0.099
ZNG044	3/4X4	0.824	1.050	4	0.796	0.099
ZNG04412	3/4X4-1/2	0.824	1.050	4-1/2	0.796	0.099
ZNG045	3/4X5	0.824	1.050	5	0.796	0.099
ZNG04512	3/4X5-1/2	0.824	1.050	5-1/2	0.796	0.099
ZNG046	3/4X6	0.824	1.050	6	0.796	0.099
ZNG04612	3/4X6-1/2	0.824	1.050	6-1/2	0.796	0.099
ZNG047	3/4X7	0.824	1.050	7	0.796	0.099
ZNG04712	3/4X7-1/2	0.824	1.050	7-1/2	0.796	0.099
ZNG048	3/4X8	0.824	1.050	8	0.796	0.099
ZNG04812	3/4X8-1/2	0.824	1.050	8-1/2	0.796	0.099
ZNG049	3/4X9	0.824	1.050	9	0.796	0.099
ZNG0410	3/4X10	0.824	1.050	10	0.796	0.099
ZNG041012	3/4X10-1/2	0.824	1.050	10-1/2	0.796	0.099
ZNG0411	3/4X11	0.824	1.050	11	0.796	0.099
ZNG041112	3/4X11-1/2	0.824	1.050	11-1/2	0.796	0.099
ZNG0412	3/4X12	0.824	1.050	12	0.796	0.099
ZNG05CL	1XCLOSE	1.049	1.315	1-1/2	----	0.116
ZNG052	1X2	1.049	1.315	2	0.985	0.116
ZNG05212	1X2-1/2	1.049	1.315	2-1/2	0.985	0.116
ZNG053	1X3	1.049	1.315	3	0.985	0.116
ZNG05312	1X3-1/2	1.049	1.315	3-1/2	0.985	0.116
ZNG054	1X4	1.049	1.315	4	0.985	0.116
ZNG05412	1X4-1/2	1.049	1.315	4-1/2	0.985	0.116
ZNG055	1X5	1.049	1.315	5	0.985	0.116
ZNG05512	1X5-1/2	1.049	1.315	5-1/2	0.985	0.116
ZNG056	1X6	1.049	1.315	6	0.985	0.116
ZNG057	1X7	1.049	1.315	7	0.985	0.116
ZNG058	1X8	1.049	1.315	8	0.985	0.116
ZNG059	1X9	1.049	1.315	9	0.985	0.116
ZNG0510	1X10	1.049	1.315	10	0.985	0.116
ZNG0511	1X11	1.049	1.315	11	0.985	0.116

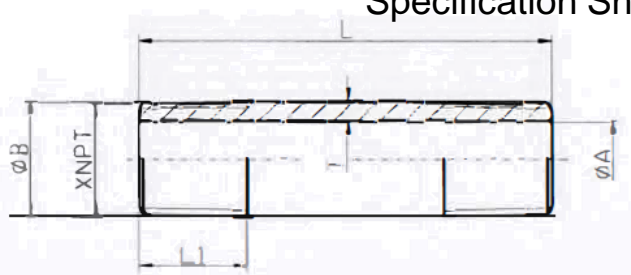
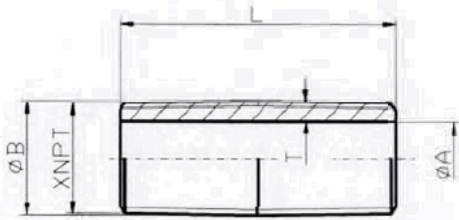
Schedule 40 Welded Steel Pipe Nipples Black and Galvanized Specification Sheet



Part #	Size	A	B	L	L1	T (min)
ZNG0512	1X12	1.049	1.315	12	0.985	0.116
ZNG06CL	11/4XCLOSE	1.380	1.660	1-5/8	----	0.123
ZNG062	11/4X2	1.380	1.660	2	0.906	0.123
ZNG06212	11/4X2-1/2	1.380	1.660	2-1/2	1.009	0.123
ZNG063	11/4X3	1.380	1.660	3	1.009	0.123
ZNG06312	11/4X3-1/2	1.380	1.660	3-1/2	1.009	0.123
ZNG064	11/4X4	1.380	1.660	4	1.009	0.123
ZNG06412	11/4X4-1/2	1.380	1.660	4-1/2	1.009	0.123
ZNG065	11/4X5	1.380	1.660	5	1.009	0.123
ZNG06512	11/4X5-1/2	1.380	1.660	5-1/2	1.009	0.123
ZNG066	11/4X6	1.380	1.660	6	1.009	0.123
ZNG067	11/4X7	1.380	1.660	7	1.009	0.123
ZNG068	11/4X8	1.380	1.660	8	1.009	0.123
ZNG069	11/4X9	1.380	1.660	9	1.009	0.123
ZNG0610	11/4X10	1.380	1.660	10	1.009	0.123
ZNG0611	11/4X11	1.380	1.660	11	1.009	0.123
ZNG0612	11/4X12	1.380	1.660	12	1.009	0.123
ZNG07CL	11/2XCLOSE	1.610	1.900	1-3/4	----	0.127
ZNG072	11/2X2	1.610	1.900	2	0.906	0.127
ZNG07212	11/2X2-1/2	1.610	1.900	2-1/2	1.025	0.127
ZNG073	11/2X3	1.610	1.900	3	1.025	0.127
ZNG07312	11/2X3-1/2	1.610	1.900	3-1/2	1.025	0.127
ZNG074	11/2X4	1.610	1.900	4	1.025	0.127
ZNG07412	11/2X4-1/2	1.610	1.900	4-1/2	1.025	0.127
ZNG075	11/2X5	1.610	1.900	5	1.025	0.127
ZNG07512	11/2X5-1/2	1.610	1.900	5-1/2	1.025	0.127
ZNG076	11/2X6	1.610	1.900	6	1.025	0.127
ZNG07612	11/2X6-1/2	1.610	1.900	6-1/2	1.025	0.127
ZNG077	11/2X7	1.610	1.900	7	1.025	0.127
ZNG078	11/2X8	1.610	1.900	8	1.025	0.127
ZNG079	11/2X9	1.610	1.900	9	1.025	0.127
ZNG0710	11/2X10	1.610	1.900	10	1.025	0.127
ZNG0711	11/2X11	1.610	1.900	11	1.025	0.127
ZNG0712	11/2X12	1.610	1.900	12	1.025	0.127
ZNG08CL	2XCLOSE	2.067	2.375	2	----	0.135
ZNG08212	2X2-1/2	2.067	2.375	2-1/2	1.058	0.135
ZNG083	2X3	2.067	2.375	3	1.058	0.135

Part #	Size	A	B	L	L1	T (min)
ZNG08312	2X3-1/2	2.067	2.375	3-1/2	1.058	0.135
ZNG084	2X4	2.067	2.375	4	1.058	0.135
ZNG08412	2X4-1/2	2.067	2.375	4-1/2	1.058	0.135
ZNG085	2X5	2.067	2.375	5	1.058	0.135
ZNG08512	2X5-1/2	2.067	2.375	5-1/2	1.058	0.135
ZNG086	2X6	2.067	2.375	6	1.058	0.135
ZNG08612	2X6-1/2	2.067	2.375	6-1/2	1.058	0.135
ZNG087	2X7	2.067	2.375	7	1.058	0.135
ZNG088	2X8	2.067	2.375	8	1.058	0.135
ZNG089	2X9	2.067	2.375	9	1.058	0.135
ZNG0810	2X10	2.067	2.375	10	1.058	0.135
ZNG0811	2X11	2.067	2.375	11	1.058	0.135
ZNG0812	2X12	2.067	2.375	12	1.058	0.135
ZNG09CL	2-1/2XCLOSE	2.469	2.875	2-1/2	----	0.178
ZNG093	2-1/2X3	2.469	2.875	3	1.571	0.178
ZNG09312	2-1/2X3-1/2	2.469	2.875	3-1/2	1.571	0.178
ZNG094	2-1/2X4	2.469	2.875	4	1.571	0.178
ZNG09412	2-1/2X4-1/2	2.469	2.875	4-1/2	1.571	0.178
ZNG095	2-1/2X5	2.469	2.875	5	1.571	0.178
ZNG09512	2-1/2X5-1/2	2.469	2.875	5-1/2	1.571	0.178
ZNG096	2-1/2X6	2.469	2.875	6	1.571	0.178
ZNG09612	2-1/2X6-1/2	2.469	2.875	6-1/2	1.571	0.178
ZNG097	2-1/2X7	2.469	2.875	7	1.571	0.178
ZNG098	2-1/2X8	2.469	2.875	8	1.571	0.178
ZNG099	2-1/2X9	2.469	2.875	9	1.571	0.178
ZNG0910	2-1/2X10	2.469	2.875	10	1.571	0.178
ZNG0911	2-1/2X11	2.469	2.875	11	1.571	0.178
ZNG0912	2-1/2X12	2.469	2.875	12	1.571	0.178
ZNG10CL	3XCLOSE	3.068	3.500	2-5/8	----	0.189
ZNG103	3X3	3.068	3.500	3	1.181	0.189
ZNG10312	3X3-1/2	3.068	3.500	3-1/2	1.634	0.189
ZNG104	3X4	3.068	3.500	4	1.634	0.189
ZNG10412	3X4-1/2	3.068	3.500	4-1/2	1.634	0.189
ZNG105	3X5	3.068	3.500	5	1.634	0.189
ZNG10512	3X5-1/2	3.068	3.500	5-1/2	1.634	0.189
ZNG106	3X6	3.068	3.500	6	1.634	0.189
ZNG107	3X7	3.068	3.500	7	1.634	0.189

Schedule 40 Welded Steel Pipe Nipples Black and Galvanized Specification Sheet

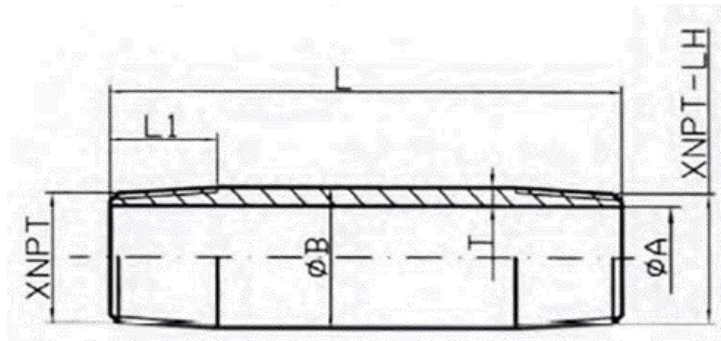


Part #	Size	A	B	L	L1	T (min)
ZNG108	3X8	3.068	3.500	8	1.634	0.189
ZNG109	3X9	3.068	3.500	9	1.634	0.189
ZNG1010	3X10	3.068	3.500	10	1.634	0.189
ZNG1011	3X11	3.068	3.500	11	1.634	0.189
ZNG1012	3X12	3.068	3.500	12	1.634	0.189
ZNG11CL	4XCLOSE	4.026	4.500	2-7/8	---	0.207
ZNG114	4X4	4.026	4.500	4	1.734	0.207
ZNG11412	4X4-1/2	4.026	4.500	4-1/2	1.734	0.207
ZNG115	4X5	4.026	4.500	5	1.734	0.207
ZNG11512	4X5-1/2	4.026	4.500	5-1/2	1.734	0.207
ZNG116	4X6	4.026	4.500	6	1.734	0.207
ZNG117	4X7	4.026	4.500	7	1.734	0.207
ZNG118	4X8	4.026	4.500	8	1.734	0.207
ZNG119	4X9	4.026	4.500	9	1.734	0.207
ZNG110	4X10	4.026	4.500	10	1.734	0.207
ZNG1111	4X11	4.026	4.500	11	1.734	0.207
ZNG1112	4X12	4.026	4.500	12	1.734	0.207
ZNG12CL	5XCLOSE	5.047	5.563	3	---	0.226
ZNG124	5X4	5.047	5.563	4	1.840	0.226
ZNG126	5X6	5.047	5.563	6	1.840	0.226
ZNG128	5X8	5.047	5.563	8	1.840	0.226
ZNG1212	5X12	5.047	5.563	12	1.840	0.226
ZNG13CL	6XCLOSE	6.065	6.625	3-1/8	---	0.245
ZNG134	6X4	6.065	6.625	4	1.772	0.245
ZNG136	6X6	6.065	6.625	6	1.946	0.245
ZNG137	6X7	6.065	6.625	7	1.946	0.245
ZNG138	6X8	6.065	6.625	8	1.946	0.245
ZNG139	6X9	6.065	6.625	9	1.946	0.245
ZNG1310	6X10	6.065	6.625	10	1.946	0.245
ZNG1312	6X12	6.065	6.625	12	1.946	0.245

Part #	Size	A	B	L	L1	T (min)
ZNB032TOE	1/2X2	0.622	0.840	2	0.782	0.095
ZNB033TOE	1/2X3	0.622	0.840	3	0.782	0.095
ZNB0312TOE	1/2X12	0.622	0.840	12	0.782	0.095
ZNB04212TOE	3/4X2-1/2	0.824	1.050	2-1/2	0.794	0.099
ZNB043TOE	3/4X3	0.824	1.050	3	0.794	0.099
ZNB04434TOE	3/4X4-3/4	0.824	1.050	4-3/4	0.794	0.099
ZNB049TOE	3/4X9	0.824	1.050	9	0.794	0.099
ZNB05212TOE	1X2-1/2	1.049	1.315	2-1/2	0.985	0.116
ZNB053TOE	1X3	1.049	1.315	3	0.985	0.116
ZNB05912TOE	1X9-1/2	1.049	1.315	9-1/2	0.985	0.116
ZNB06112TOE	11/4X1-1/2	1.380	1.660	1-1/2	1.009	0.123
ZNB065TOE	11/4X5	1.380	1.660	5	1.009	0.123
ZNB0610TOE	11/4X10	1.380	1.660	10	1.009	0.123
ZNB0612TOE	11/4X12	1.380	1.660	12	1.009	0.123
ZNB07212TOE	11/2X2-1/2	1.610	1.900	2-1/2	1.025	0.127
ZNB072TOE	11/2X2	1.610	1.900	2	0.906	0.127
ZNB082TOE	2X2	2.067	2.375	2	1.058	0.135
ZNB083TOE	2X3	2.067	2.375	3	1.058	0.135
ZNB08434TOE	2X4-3/4	2.067	2.375	4-3/4	1.058	0.135
ZNB084TOE	2X4	2.067	2.375	4	1.058	0.135
ZNB087TOE	2X7	2.067	2.375	7	1.058	0.135
ZNB093TOE	2-1/2X3	2.469	2.875	3	1.417	0.178
ZNB094TOE	2-1/2X4	2.469	2.875	4	1.571	0.178
ZNB103TOE	3X3	3.068	3.500	3	1.417	0.189
ZNB108TOE	3X8	3.068	3.500	8	1.634	0.189
ZNB114TOE	4X4	4.026	4.500	4	1.734	0.207

Schedule 40 Welded Steel Pipe Nipples Black and Galvanized

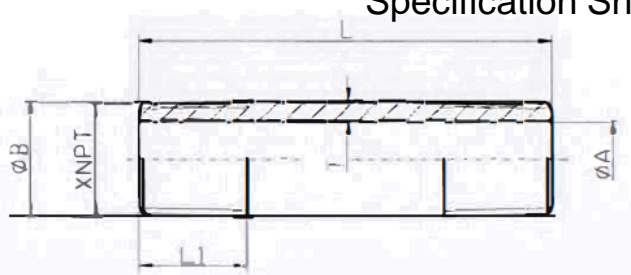
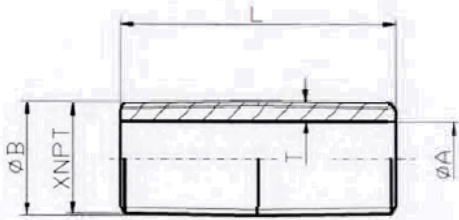
Specification Sheet



RIGHT & LEFT BLACK / GALVANIZED NIPPLES

Part #	Size	A	B	L	L1	T (min)
NRLB034	1/2X4	0.622	0.840	4	0.782	0.095
NRLB074	1-1/2X4	1.610	1.900	4	1.025	0.127
NRLB064	1-1/4X4	1.380	1.660	4	1.009	0.123
NRLB054	1X4	1.049	1.315	4	0.985	0.116
NRLB084	2X4	2.067	2.375	4	1.058	0.135
NRLB044	3/4X4	0.824	1.050	4	0.794	0.099
NRLG034	1/2X4	0.622	0.840	4	0.782	0.095
NRLG044	3/4X4	0.824	1.050	4	0.794	0.099
NRLG054	1X4	1.049	1.315	4	0.985	0.116
NRLG064	1-1/4X4	1.380	1.660	4	1.009	0.123
NRLG074	1-1/2X4	1.610	1.900	4	1.025	0.127
NRLG084	2X4	2.067	2.375	4	1.058	0.135

Schedule 40 Welded Steel Pipe Nipples Black and Galvanized Pre-Cut Specification Sheet

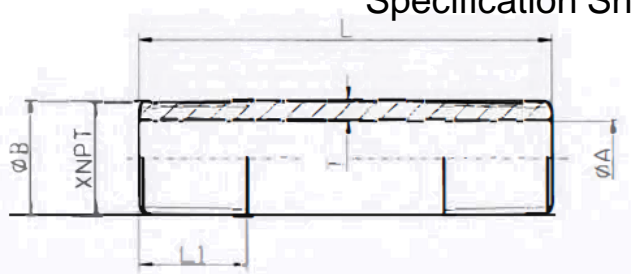
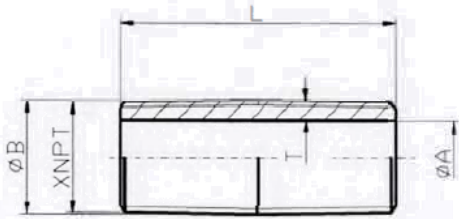


Part #	Size	A	B	L	L1	T (min)
NB0114	1/4X14	0.364	0.540	14	0.595	0.077
NB0124	1/4X24	0.364	0.540	24	0.595	0.077
NB0148	1/4X48	0.364	0.540	48	0.595	0.077
NB0218	3/8X18	0.493	0.675	18	0.601	0.080
NB0224	3/8X24	0.493	0.675	24	0.601	0.080
NB0230	3/8X30	0.493	0.675	30	0.601	0.080
NB0236	3/8X36	0.493	0.675	36	0.601	0.080
NB0248	3/8X48	0.493	0.675	48	0.601	0.080
NB0313	1/2X13	0.622	0.840	13	0.782	0.095
NB0314	1/2X14	0.622	0.840	14	0.782	0.095
NB0315	1/2X15	0.622	0.840	15	0.782	0.095
NB0316	1/2X16	0.622	0.840	16	0.782	0.095
NB0318	1/2X18	0.622	0.840	18	0.782	0.095
NB0320	1/2X20	0.622	0.840	20	0.782	0.095
NB0321	1/2X21	0.622	0.840	21	0.782	0.095
NB0322	1/2X22	0.622	0.840	22	0.782	0.095
NB0324	1/2X24	0.622	0.840	24	0.782	0.095
NB0327	1/2X27	0.622	0.840	27	0.782	0.095
NB0330	1/2X30	0.622	0.840	30	0.782	0.095
NB0336	1/2X36	0.622	0.840	36	0.782	0.095
NB0342	1/2X42	0.622	0.840	42	0.782	0.095
NB0348	1/2X48	0.622	0.840	48	0.782	0.095
NB0360	1/2X60	0.622	0.840	60	0.782	0.095
NB0372	1/2X72	0.622	0.840	72	0.782	0.095
NB0414	3/4X14	0.824	1.050	14	0.794	0.099
NB0415	3/4X15	0.824	1.050	15	0.794	0.099
NB0416	3/4X16	0.824	1.050	16	0.794	0.099
NB0418	3/4X18	0.824	1.050	18	0.794	0.099
NB0420	3/4X20	0.824	1.050	20	0.794	0.099
NB0422	3/4X22	0.824	1.050	22	0.794	0.099
NB0424	3/4X24	0.824	1.050	24	0.794	0.099
NB0426	3/4X26	0.824	1.050	26	0.794	0.099
NB0430	3/4X30	0.824	1.050	30	0.794	0.099
NB0436	3/4X36	0.824	1.050	36	0.794	0.099
NB0442	3/4X42	0.824	1.050	42	0.794	0.099
NB0448	3/4X48	0.824	1.050	48	0.794	0.099
NB0454	3/4X54	0.824	1.050	54	0.794	0.099

Part #	Size	A	B	L	L1	T (min)
NB0460	3/4X60	0.824	1.050	60	0.794	0.099
NB0472	3/4X72	0.824	1.050	72	0.794	0.099
NB0513	1X13	1.049	1.315	13	0.985	0.116
NB0514	1X14	1.049	1.315	14	0.985	0.116
NB0515	1X15	1.049	1.315	15	0.985	0.116
NB0516	1X16	1.049	1.315	16	0.985	0.116
NB0518	1X18	1.049	1.315	18	0.985	0.116
NB0520	1X20	1.049	1.315	20	0.985	0.116
NB0530	1X30	1.049	1.315	30	0.985	0.116
NB0536	1X36	1.049	1.315	36	0.985	0.116
NB0542	1X42	1.049	1.315	42	0.985	0.116
NB0548	1X48	1.049	1.315	48	0.985	0.116
NB0554	1X54	1.049	1.315	54	0.985	0.116
NB0560	1X60	1.049	1.315	60	0.985	0.116
NB0572	1X72	1.049	1.315	72	0.985	0.116
NB0613	1 1/4X13	1.380	1.660	13	1.009	0.123
NB0614	1 1/4X14	1.380	1.660	14	1.009	0.123
NB0615	1 1/4X15	1.380	1.660	15	1.009	0.123
NB0616	1 1/4X16	1.380	1.660	16	1.009	0.123
NB0618	1 1/4X18	1.380	1.660	18	1.009	0.123
NB0624	1 1/4X24	1.380	1.660	24	1.009	0.123
NB0630	1 1/4X30	1.380	1.660	30	1.009	0.123
NB0636	1 1/4X36	1.380	1.660	36	1.009	0.123
NB0642	1 1/4X42	1.380	1.660	42	1.009	0.123
NB0648	1 1/4X48	1.380	1.660	48	1.009	0.123
NB0660	1 1/4X60	1.380	1.660	60	1.009	0.123
NB0672	1 1/4X72	1.380	1.660	72	1.009	0.123
NB0716	1 1/2X16	1.610	1.900	16	1.025	0.127
NB0718	1 1/2X18	1.610	1.900	18	1.025	0.127
NB0724	1 1/2X24	1.610	1.900	24	1.025	0.127
NB0730	1 1/2X30	1.610	1.900	30	1.025	0.127
NB0736	1 1/2X36	1.610	1.900	36	1.025	0.127
NB0742	1 1/2X42	1.610	1.900	42	1.025	0.127
NB0748	1 1/2X48	1.610	1.900	48	1.025	0.127
NB0760	1 1/2X60	1.610	1.900	60	1.025	0.127
NB0772	1 1/2X72	1.610	1.900	72	1.025	0.127
NB0814	2X14	2.067	2.375	14	1.058	0.135

Schedule 40 Welded Steel Pipe Nipples Black and Galvanized Pre-Cut

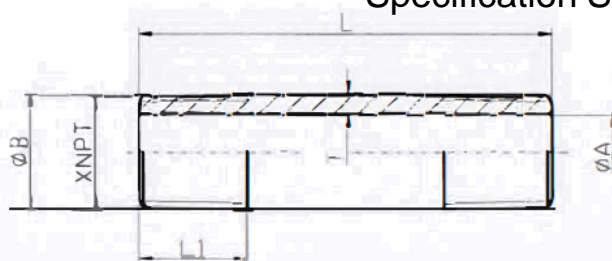
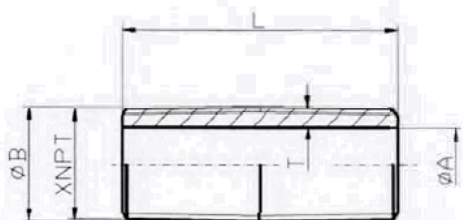
Specification Sheet



Part #	Size	A	B	L	L1	T (min)
NB0815	2X15	2.067	2.375	15	1.058	0.135
NB0816	2X16	2.067	2.375	16	1.058	0.135
NB0818	2X18	2.067	2.375	18	1.058	0.135
NB0824	2X24	2.067	2.375	24	1.058	0.135
NB0830	2X30	2.067	2.375	30	1.058	0.135
NB0836	2X36	2.067	2.375	36	1.058	0.135
NB0842	2X42	2.067	2.375	42	1.058	0.135
NB0848	2X48	2.067	2.375	48	1.058	0.135
NB0860	2X60	2.067	2.375	60	1.058	0.135
NB0872	2X72	2.067	2.375	72	1.058	0.135
NB0914	2-1/2X14	2.469	2.875	14	1.571	0.178
NB0915	2-1/2X15	2.469	2.875	15	1.571	0.178
NB0918	2-1/2X18	2.469	2.875	18	1.571	0.178
NB0924	2-1/2X24	2.469	2.875	24	1.571	0.178
NB0936	2-1/2X36	2.469	2.875	36	1.571	0.178
NB0972	2-1/2X72	2.469	2.875	72	1.571	0.178
NB1018	3X18	3.068	3.500	18	1.634	0.189
NB1024	3X24	3.068	3.500	24	1.634	0.189
NB1030	3X30	3.068	3.500	30	1.634	0.189
NB1036	3X36	3.068	3.500	36	1.634	0.189
NB1048	3X48	3.068	3.500	48	1.634	0.189
NB1118	4X18	4.026	4.500	18	1.734	0.207
NB1124	4X24	4.026	4.500	24	1.734	0.207
NB1130	4X30	4.026	4.500	30	1.734	0.207
NB1136	4X36	4.026	4.500	36	1.734	0.207
NB1148	4X48	4.026	4.500	48	1.734	0.207
NG0116	1/4X16	0.364	0.540	16	0.595	0.077
NG0118	1/4X18	0.364	0.540	18	0.595	0.077
NG0120	1/4X20	0.364	0.540	20	0.595	0.077
NG0124	1/4X24	0.364	0.540	24	0.595	0.077
NG0136	1/4X36	0.364	0.540	36	0.595	0.077
NG0148	1/4X48	0.364	0.540	48	0.595	0.077
NG0160	1/4X60	0.364	0.540	60	0.595	0.077
NG0172	1/4X72	0.364	0.540	72	0.595	0.077
NG0218	3/8X18	0.493	0.675	18	0.601	0.080
NG0224	3/8X24	0.493	0.675	24	0.601	0.080
NG0230	3/8X30	0.493	0.675	30	0.601	0.080

Part #	Size	A	B	L	L1	T (min)
NG0236	3/8X36	0.493	0.675	36	0.601	0.080
NG0242	3/8X42	0.493	0.675	42	0.601	0.080
NG0248	3/8X48	0.493	0.675	48	0.601	0.080
NG0260	3/8X60	0.493	0.675	60	0.601	0.080
NG0272	3/8X72	0.493	0.675	72	0.601	0.080
NG0314	1/2X14	0.622	0.840	14	0.782	0.095
NG0316	1/2X16	0.622	0.840	16	0.782	0.095
NG0318	1/2X18	0.622	0.840	18	0.782	0.095
NG0324	1/2X24	0.622	0.840	24	0.782	0.095
NG0326	1/2X26	0.622	0.840	26	0.782	0.095
NG0330	1/2X30	0.622	0.840	30	0.782	0.095
NG0336	1/2X36	0.622	0.840	36	0.782	0.095
NG0342	1/2X42	0.622	0.840	42	0.782	0.095
NG0348	1/2X48	0.622	0.840	48	0.782	0.095
NG0360	1/2X60	0.622	0.840	60	0.782	0.095
NG0372	1/2X72	0.622	0.840	72	0.782	0.095
NG0414	3/4X14	0.824	1.050	14	0.794	0.099
NG0415	3/4X15	0.824	1.050	15	0.794	0.099
NG0416	3/4X16	0.824	1.050	16	0.794	0.099
NG0418	3/4X18	0.824	1.050	18	0.794	0.099
NG0424	3/4X24	0.824	1.050	24	0.794	0.099
NG0430	3/4X30	0.824	1.050	30	0.794	0.099
NG0436	3/4X36	0.824	1.050	36	0.794	0.099
NG0442	3/4X42	0.824	1.050	42	0.794	0.099
NG0448	3/4X48	0.824	1.050	48	0.794	0.099
NG0454	3/4X54	0.824	1.050	54	0.794	0.099
NG0460	3/4X60	0.824	1.050	60	0.794	0.099
NG0472	3/4X72	0.824	1.050	72	0.794	0.099
NG0514	1X14	1.049	1.315	14	0.985	0.116
NG0515	1X15	1.049	1.315	15	0.985	0.116
NG0516	1X16	1.049	1.315	16	0.985	0.116
NG0518	1X18	1.049	1.315	18	0.985	0.116
NG0520	1X20	1.049	1.315	20	0.985	0.116
NG0524	1X24	1.049	1.315	24	0.985	0.116
NG0530	1X30	1.049	1.315	30	0.985	0.116
NG0536	1X36	1.049	1.315	36	0.985	0.116
NG0542	1X42	1.049	1.315	42	0.985	0.116

Schedule 40 Welded Steel Pipe Nipples Black and Galvanized Pre-Cut Specification Sheet



Part #	Size	A	B	L	L1	T (min)
NG0548	1X48	1.049	1.315	48	0.985	0.116
NG0560	1X60	1.049	1.315	60	0.985	0.116
NG0572	1X72	1.049	1.315	72	0.985	0.116
NG0614	1 1/4X14	1.380	1.660	14	1.009	0.123
NG0615	1 1/4X15	1.380	1.660	15	1.009	0.123
NG0618	1 1/4X18	1.380	1.660	18	1.009	0.123
NG0624	1 1/4X24	1.380	1.660	24	1.009	0.123
NG0630	1 1/4X30	1.380	1.660	30	1.009	0.123
NG0636	1 1/4X36	1.380	1.660	36	1.009	0.123
NG0648	1 1/4X48	1.380	1.660	48	1.009	0.123
NG0660	1 1/4X60	1.380	1.660	60	1.009	0.123
NG0672	1 1/4X72	1.380	1.660	72	1.009	0.123
NG0714	1 1/2X14	1.610	1.900	14	1.025	0.127
NG0718	1 1/2X18	1.610	1.900	18	1.025	0.127
NG0724	1 1/2X24	1.610	1.900	24	1.025	0.127
NG0730	1 1/2X30	1.610	1.900	30	1.025	0.127
NG0736	1 1/2X36	1.610	1.900	36	1.025	0.127
NG0742	1 1/2X42	1.610	1.900	42	1.025	0.127
NG0748	1 1/2X48	1.610	1.900	48	1.025	0.127
NG0760	1 1/2X60	1.610	1.900	60	1.025	0.127
NG0772	1 1/2X72	1.610	1.900	72	1.025	0.127
NG0818	2X18	2.067	2.375	18	1.058	0.135
NG0824	2X24	2.067	2.375	24	1.058	0.135
NG0830	2X30	2.067	2.375	30	1.058	0.135
NG0836	2X36	2.067	2.375	36	1.058	0.135
NG0842	2X42	2.067	2.375	42	1.058	0.135

Part #	Size	A	B	L	L1	T (min)
NG0848	2X48	2.067	2.375	48	1.058	0.135
NG0860	2X60	2.067	2.375	60	1.058	0.135
NG0872	2X72	2.067	2.375	72	1.058	0.135
NG0918	2-1/2X18	2.469	2.875	18	1.571	0.178
NG0924	2-1/2X24	2.469	2.875	24	1.571	0.178
NG0930	2-1/2X30	2.469	2.875	30	1.571	0.178
NG0936	2-1/2X36	2.469	2.875	36	1.571	0.178
NG0948	2-1/2X48	2.469	2.875	48	1.571	0.178
NG0972	2-1/2X72	2.469	2.875	72	1.571	0.178
NG1018	3X18	3.068	3.500	18	1.634	0.189
NG1024	3X24	3.068	3.500	24	1.634	0.189
NG1030	3X30	3.068	3.500	30	1.634	0.189
NG1036	3X36	3.068	3.500	36	1.634	0.189
NG1048	3X48	3.068	3.500	48	1.634	0.189
NG1060	3X60	3.068	3.500	60	1.634	0.189
NG1072	3X72	3.068	3.500	72	1.634	0.189
NG1118	4X18	4.026	4.500	18	1.734	0.207
NG1124	4X24	4.026	4.500	24	1.734	0.207
NG1130	4X30	4.026	4.500	30	1.734	0.207
NG1136	4X36	4.026	4.500	36	1.734	0.207
NG1148	4X48	4.026	4.500	48	1.734	0.207
NG1160	4X60	4.026	4.500	60	1.734	0.207
NG1172	4X72	4.026	4.500	72	1.734	0.207
NG1318	6X18	6.065	6.625	18	1.946	0.245
NG1324	6X24	6.065	6.625	24	1.946	0.245
NG1360	6X60	6.065	6.625	60	1.946	0.245

