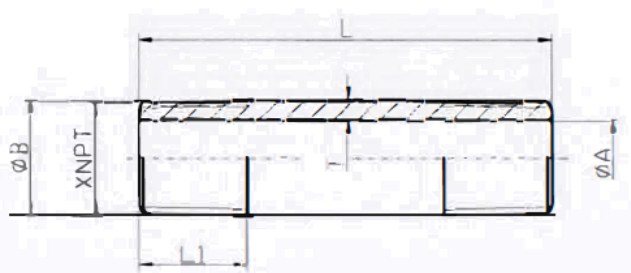
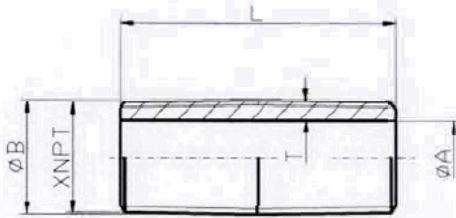


# Schedule 80 Black Seamless Steel Pipe Nipples

## Specification Sheet

### FEATURES:

Material: ASTM A106  
 Dimensions: ASTM A733  
 Threads: ASME B1.20.1  
 Testing: Hydrostatic (2500 psi)  
 Availability: Stocked from 1/8" through 4" diameters

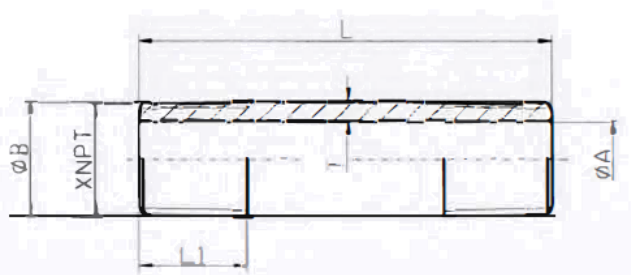
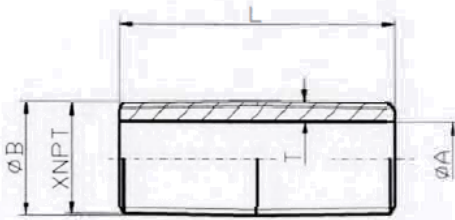


Part #	Size	A	B	L	L1	T (min)
NXBS00CL	1/8XCLOSE	0.215	0.405	3/4	----	0.083
NXBS00112	1/8X1-1/2	0.215	0.405	1-1/2	0.392	0.083
NXBS002	1/8X2	0.215	0.405	2	0.392	0.083
NXBS00212	1/8X2-1/2	0.215	0.405	2-1/2	0.392	0.083
NXBS003	1/8X3	0.215	0.405	3	0.392	0.083
NXBS00312	1/8X3-1/2	0.215	0.405	3-1/2	0.392	0.083
NXBS004	1/8X4	0.215	0.405	4	0.392	0.083
NXBS00412	1/8X4-1/2	0.215	0.405	4-1/2	0.392	0.083
NXBS005	1/8X5	0.215	0.405	5	0.392	0.083
NXBS00512	1/8X5-1/2	0.215	0.405	5-1/2	0.392	0.083
NXBS006	1/8X6	0.215	0.405	6	0.392	0.083
NXBS007	1/8X7	0.215	0.405	7	0.392	0.083
NXBS008	1/8X8	0.215	0.405	8	0.392	0.083
NXBS009	1/8X9	0.215	0.405	9	0.392	0.083
NXBS0010	1/8X10	0.215	0.405	10	0.392	0.083
NXBS0011	1/8X11	0.215	0.405	11	0.392	0.083
NXBS0012	1/8X12	0.215	0.405	12	0.392	0.083
NXBS01CL	1/4XCLOSE	0.302	0.540	7/8	---	0.104
NXBS01112	1/4X1-1/2	0.302	0.540	1-1/2	0.595	0.104
NXBS012	1/4X2	0.302	0.540	2	0.595	0.104
NXBS01212	1/4X2-1/2	0.302	0.540	2-1/2	0.595	0.104
NXBS013	1/4X3	0.302	0.540	3	0.595	0.104
NXBS01312	1/4X3-1/2	0.302	0.540	3-1/2	0.595	0.104
NXBS014	1/4X4	0.302	0.540	4	0.595	0.104
NXBS01412	1/4X4-1/2	0.302	0.540	4-1/2	0.595	0.104
NXBS015	1/4X5	0.302	0.540	5	0.595	0.104
NXBS01512	1/4X5-1/2	0.302	0.540	5-1/2	0.595	0.104
NXBS016	1/4X6	0.302	0.540	6	0.595	0.104
NXBS017	1/4X7	0.302	0.540	7	0.595	0.104
NXBS018	1/4X8	0.302	0.540	8	0.595	0.104

Part #	Size	A	B	L	L1	T (min)
NXBS019	1/4X9	0.302	0.540	9	0.595	0.104
NXBS0110	1/4X10	0.302	0.540	10	0.595	0.104
NXBS0111	1/4X11	0.302	0.540	11	0.595	0.104
NXBS0112	1/4X12	0.302	0.540	12	0.595	0.104
NXBS02CL	3/8XCLOSE	0.423	0.675	1	----	0.110
NXBS02112	3/8X1-1/2	0.423	0.675	1-1/2	0.601	0.110
NXBS022	3/8X2	0.423	0.675	2	0.601	0.110
NXBS02212	3/8X2-1/2	0.423	0.675	2-1/2	0.601	0.110
NXBS023	3/8X3	0.423	0.675	3	0.601	0.110
NXBS02312	3/8X3-1/2	0.423	0.675	3-1/2	0.601	0.110
NXBS024	3/8X4	0.423	0.675	4	0.601	0.110
NXBS02412	3/8X 4-1/2	0.423	0.675	4-1/2	0.601	0.110
NXBS025	3/8X5	0.423	0.675	5	0.601	0.110
NXBS02512	3/8X5-1/2	0.423	0.675	5-1/2	0.601	0.110
NXBS026	3/8X6	0.423	0.675	6	0.601	0.110
NXBS027	3/8X7	0.423	0.675	7	0.601	0.110
NXBS028	3/8X8	0.423	0.675	8	0.601	0.110
NXBS029	3/8X9	0.423	0.675	9	0.601	0.110
NXBS0210	3/8X10	0.423	0.675	10	0.601	0.110
NXBS0211	3/8X11	0.423	0.675	11	0.601	0.110
NXBS0212	3/8X12	0.423	0.675	12	0.601	0.110
NXBS03CL	1/2XCLOSE	0.546	0.840	1-1/8	----	0.129
NXBS03112	1/2X1-1/2	0.546	0.840	1-1/2	0.669	0.129
NXBS032	1/2X2	0.546	0.840	2	0.782	0.129
NXBS03212	1/2X2-1/2	0.546	0.840	2-1/2	0.782	0.129
NXBS033	1/2X3	0.546	0.840	3	0.782	0.129
NXBS03312	1/2X3-1/2	0.546	0.840	3-1/2	0.782	0.129
NXBS034	1/2X4	0.546	0.840	4	0.782	0.129
NXBS03412	1/2X4-1/2	0.546	0.840	4-1/2	0.782	0.129
NXBS035	1/2X5	0.546	0.840	5	0.782	0.129

# Schedule 80 Black Seamless Steel Pipe Nipples

## Specification Sheet

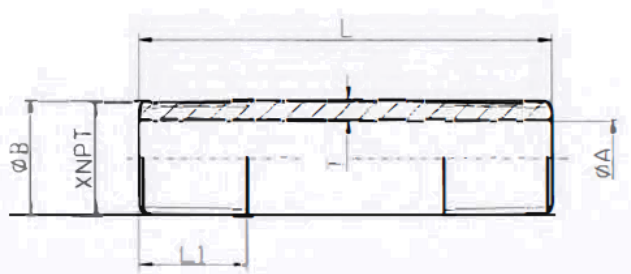
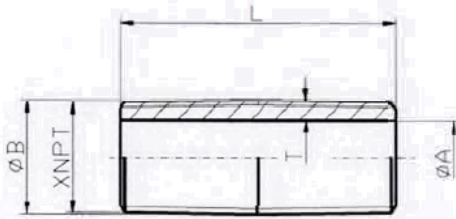


Part #	Size	A	B	L	L1	T (min)
NXBS03512	1/2X5-1/2	0.546	0.840	5-1/2	0.782	0.129
NXBS036	1/2X6	0.546	0.840	6	0.782	0.129
NXBS03612	1/2X6-1/2	0.546	0.840	6-1/2	0.782	0.129
NXBS037	1/2X7	0.546	0.840	7	0.782	0.129
NXBS03712	1/2X7-1/2	0.546	0.840	7-1/2	0.782	0.129
NXBS038	1/2X8	0.546	0.840	8	0.782	0.129
NXBS039	1/2X9	0.546	0.840	9	0.782	0.129
NXBS0310	1/2X10	0.546	0.840	10	0.782	0.129
NXBS0311	1/2X11	0.546	0.840	11	0.782	0.129
NXBS0312	1/2X12	0.546	0.840	12	0.782	0.129
NXBS04CL	3/4XCLOSE	0.742	1.050	1-3/8	----	0.135
NXBS04112	3/4X1-1/2	0.742	1.050	1-1/2	0.669	0.135
NXBS042	3/4X2	0.742	1.050	2	0.794	0.135
NXBS04212	3/4X2-1/2	0.742	1.050	2-1/2	0.794	0.135
NXBS043	3/4X3	0.742	1.050	3	0.794	0.135
NXBS04312	3/4X3-1/2	0.742	1.050	3-1/2	0.794	0.135
NXBS044	3/4X4	0.742	1.050	4	0.794	0.135
NXBS04412	3/4X4-1/2	0.742	1.050	4-1/2	0.794	0.135
NXBS045	3/4X5	0.742	1.050	5	0.794	0.135
NXBS04512	3/4X5-1/2	0.742	1.050	5-1/2	0.794	0.135
NXBS046	3/4X6	0.742	1.050	6	0.794	0.135
NXBS04612	3/4X6-1/2	0.742	1.050	6-1/2	0.794	0.135
NXBS047	3/4X7	0.742	1.050	7	0.794	0.135
NXBS04712	3/4X7-1/2	0.742	1.050	7-1/2	0.794	0.135
NXBS048	3/4X8	0.742	1.050	8	0.794	0.135
NXBS049	3/4X9	0.742	1.050	9	0.794	0.135
NXBS0410	3/4X10	0.742	1.050	10	0.794	0.135
NXBS0411	3/4X11	0.742	1.050	11	0.794	0.135
NXBS0412	3/4X12	0.742	1.050	12	0.794	0.135
NXBS05CL	1XCLOSE	0.957	1.315	1-1/2	----	0.157
NXBS052	1X2	0.957	1.315	2	0.906	0.157
NXBS05212	1X2-1/2	0.957	1.315	2-1/2	0.985	0.157
NXBS053	1X3	0.957	1.315	3	0.985	0.157
NXBS05312	1X3-1/2	0.957	1.315	3-1/2	0.985	0.157
NXBS054	1X4	0.957	1.315	4	0.985	0.157
NXBS05412	1X4-1/2	0.957	1.315	4-1/2	0.985	0.157
NXBS055	1X5	0.957	1.315	5	0.985	0.157

Part #	Size	A	B	L	L1	T (min)
NXBS05512	1X5-1/2	0.957	1.315	5-1/2	0.985	0.157
NXBS056	1X6	0.957	1.315	6	0.985	0.157
NXBS057	1X7	0.957	1.315	7	0.985	0.157
NXBS058	1X8	0.957	1.315	8	0.985	0.157
NXBS059	1X9	0.957	1.315	9	0.985	0.157
NXBS0510	1X10	0.957	1.315	10	0.985	0.157
NXBS0511	1X11	0.957	1.315	11	0.985	0.157
NXBS0512	1X12	0.957	1.315	12	0.985	0.157
NXBS06CL	11/4XCLOSE	1.278	1.660	1-5/8	----	0.167
NXBS062	11/4X2	1.278	1.660	2	0.906	0.167
NXBS06212	11/4X2-1/2	1.278	1.660	2-1/2	1.009	0.167
NXBS063	11/4X3	1.278	1.660	3	1.009	0.167
NXBS06312	11/4X3-1/2	1.278	1.660	3-1/2	1.009	0.167
NXBS064	11/4X4	1.278	1.660	4	1.009	0.167
NXBS06412	11/4X4-1/2	1.278	1.660	4-1/2	1.009	0.167
NXBS065	11/4X5	1.278	1.660	5	1.009	0.167
NXBS06512	11/4X5-1/2	1.278	1.660	5-1/2	1.009	0.167
NXBS066	11/4X6	1.278	1.660	6	1.009	0.167
NXBS067	11/4X7	1.278	1.660	7	1.009	0.167
NXBS068	11/4X8	1.278	1.660	8	1.009	0.167
NXBS069	11/4X9	1.278	1.660	9	1.009	0.167
NXBS0610	11/4X10	1.278	1.660	10	1.009	0.167
NXBS0611	11/4X11	1.278	1.660	11	1.009	0.167
NXBS0612	11/4X12	1.278	1.660	12	1.009	0.167
NXBS07CL	11/2XCLOSE	1.500	1.900	1-3/4	----	0.175
NXBS072	11/2X2	1.500	1.900	2	0.906	0.175
NXBS07212	11/2X2-1/2	1.500	1.900	2-1/2	1.025	0.175
NXBS073	11/2X3	1.500	1.900	3	1.025	0.175
NXBS07312	11/2X3-1/2	1.500	1.900	3-1/2	1.025	0.175
NXBS074	11/2X4	1.500	1.900	4	1.025	0.175
NXBS07412	11/2X4-1/2	1.500	1.900	4-1/2	1.025	0.175
NXBS075	11/2X5	1.500	1.900	5	1.025	0.175
NXBS07512	11/2X5-1/2	1.500	1.900	5-1/2	1.025	0.175
NXBS076	11/2X6	1.500	1.900	6	1.025	0.175
NXBS077	11/2X7	1.500	1.900	7	1.025	0.175
NXBS078	11/2X8	1.500	1.900	8	1.025	0.175
NXBS079	11/2X9	1.500	1.900	9	1.025	0.175

# Schedule 80 Black Seamless Steel Pipe Nipples

## Specification Sheet



Part #	Size	A	B	L	L1	T (min)
NXBS0710	11/2X10	1.500	1.900	10	1.025	0.175
NXBS0711	11/2X11	1.500	1.900	11	1.025	0.175
NXBS0712	11/2X12	1.500	1.900	12	1.025	0.175
NXBS08CL	2XCLOSE	1.939	2.375	2	----	0.191
NXBS08212	2X2-1/2	1.939	2.375	2-1/2	1.058	0.191
NXBS0824	2X24	1.939	2.375	24	1.058	0.191
NXBS083	2X3	1.939	2.375	3	1.058	0.191
NXBS08312	2X3-1/2	1.939	2.375	3-1/2	1.058	0.191
NXBS0836	2X36	1.939	2.375	36	1.058	0.191
NXBS084	2X4	1.939	2.375	4	1.058	0.191
NXBS08412	2X4-1/2	1.939	2.375	4-1/2	1.058	0.191
NXBS085	2X5	1.939	2.375	5	1.058	0.191
NXBS08512	2X5-1/2	1.939	2.375	5-1/2	1.058	0.191
NXBS086	2X6	1.939	2.375	6	1.058	0.191
NXBS087	2X7	1.939	2.375	7	1.058	0.191
NXBS088	2X8	1.939	2.375	8	1.058	0.191
NXBS0810	2X10	1.939	2.375	10	1.058	0.191
NXBS0811	2X11	1.939	2.375	11	1.058	0.191
NXBS0812	2X12	1.939	2.375	12	1.058	0.191
NXBS089	2X9	1.939	2.375	9	1.058	0.191
NXBS09CL	21/2XCLOSE	2.323	2.875	2-1/2	----	0.242
NXBS093	21/2X3	2.323	2.875	3	1.571	0.242
NXBS09312	21/2X3-1/2	2.323	2.875	3-1/2	1.571	0.242
NXBS094	21/2X4	2.323	2.875	4	1.571	0.242
NXBS09412	21/2X4-1/2	2.323	2.875	4-1/2	1.571	0.242
NXBS095	21/2X5	2.323	2.875	5	1.571	0.242
NXBS09512	21/2X5-1/2	2.323	2.875	5-1/2	1.571	0.242
NXBS096	21/2X6	2.323	2.875	6	1.571	0.242
NXBS097	21/2X7	2.323	2.875	7	1.571	0.242
NXBS098	21/2X8	2.323	2.875	8	1.571	0.242

Part #	Size	A	B	L	L1	T (min)
NXBS099	21/2X9	2.323	2.875	9	1.571	0.242
NXBS0910	21/2X10	2.323	2.875	10	1.571	0.242
NXBS0911	21/2X11	2.323	2.875	11	1.571	0.242
NXBS0912	21/2X12	2.323	2.875	12	1.571	0.242
NXBS10CL	3XCLOSE	2.900	3.500	2-5/8	----	0.263
NXBS103	3X3	2.900	3.500	3	1.417	0.263
NXBS10312	3X3-1/2	2.900	3.500	3-1/2	1.634	0.263
NXBS104	3X4	2.900	3.500	4	1.634	0.263
NXBS10412	3X4-1/2	2.900	3.500	4-1/2	1.634	0.263
NXBS105	3X5	2.900	3.500	5	1.634	0.263
NXBS10512	3X5-1/2	2.900	3.500	5-1/2	1.634	0.263
NXBS106	3X6	2.900	3.500	6	1.634	0.263
NXBS107	3X7	2.900	3.500	7	1.634	0.263
NXBS108	3X8	2.900	3.500	8	1.634	0.263
NXBS109	3X9	2.900	3.500	9	1.634	0.263
NXBS1010	3X10	2.900	3.500	10	1.634	0.263
NXBS1011	3X11	2.900	3.500	11	1.634	0.263
NXBS1012	3X12	2.900	3.500	12	1.634	0.263
NXBS11CL	4XCLOSE	3.826	4.500	2-7/8	----	0.295
NXBS114	4X4	3.826	4.500	4	1.734	0.295
NXBS11412	4X4-1/2	3.826	4.500	4-1/2	1.734	0.295
NXBS115	4X5	3.826	4.500	5	1.734	0.295
NXBS11512	4X5-1/2	3.826	4.500	5-1/2	1.734	0.295
NXBS116	4X6	3.826	4.500	6	1.734	0.295
NXBS117	4X7	3.826	4.500	7	1.734	0.295
NXBS118	4X8	3.826	4.500	8	1.734	0.295
NXBS119	4X9	3.826	4.500	9	1.734	0.295
NXBS1110	4X10	3.826	4.500	10	1.734	0.295
NXBS1111	4X11	3.826	4.500	11	1.734	0.295
NXBS1112	4X12	3.826	4.500	12	1.734	0.295

