

# PEX Flexible Water Heater Connectors

## Corrugated

### Specification Sheet

#### FEATURES & BENEFITS

- Corrugated Stainless Steel Connectors
- 3/4" FIP x 3/4" PEX
- Working Temp -4-302°F
- Working Pressure Max. 125 PSI
- NSF61, NSF14, cUPC Approved
- ASME A112.18.6, CSA B125.6 Approved

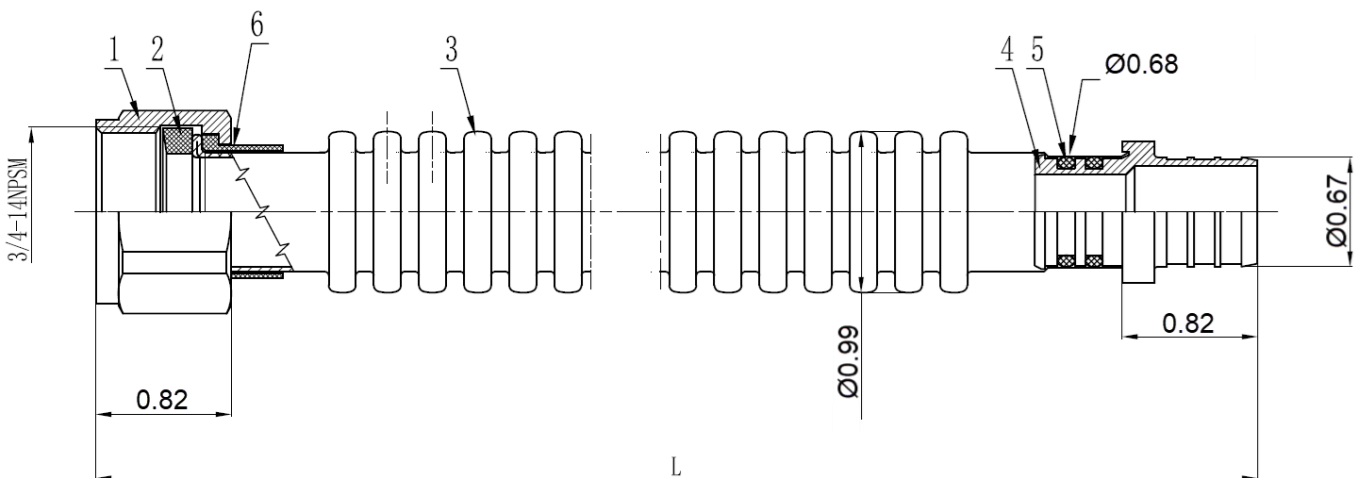
SSCWH-18PXLF - 18" Long

SSCWH-24PXLF - 24" Long



#### MATERIAL SPECIFICATIONS

No.	Part	Material
1	Nut	HPb57-3
2	Washer	EPDM
3	Hose	SS304
4	PEX Fitting	C37100
5	O-Ring	EPDM
6	Cover	Plastic POM



**MATCO**  
**NORCA**