

Flexible Water Heater Connectors

Corrugated

Specification Sheet

FEATURES & BENEFITS

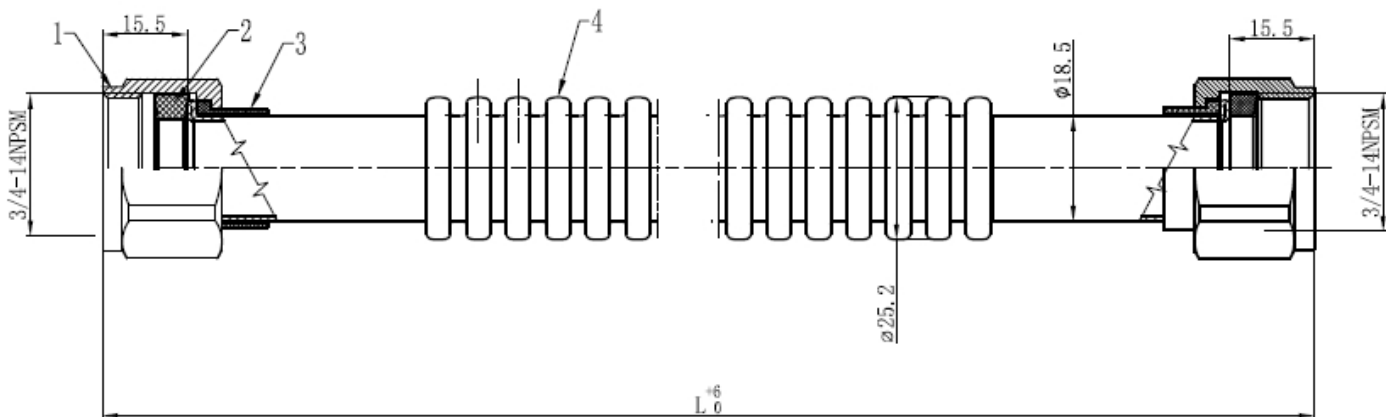
- Corrugated Stainless Steel Connectors
- 3/4" FIP
- Working Temp -4-302°F
- Working Pressure Max. 125 PSI
- NSF61, NSF14, cUPC Approved
- ASME A112.18.6-2017, CSA B125.6-17 Approved

SSCWH-12 - 12" Long
SSCWH-18 - 18" Long
SSCWH-24 - 24" Long



MATERIAL SPECIFICATIONS

No.	Part	Material
1	Nuts	HPb57-3
2	Washer	EPDM
3	Plastic Cover	POM
4	Hose	SS304



MATCO-NORCA
 Global sourcing. National compliance. Local service.

www.matco-norca.com • mail@matco-norca.com