

# SS-105 Sink Strainer • Spec Sheet

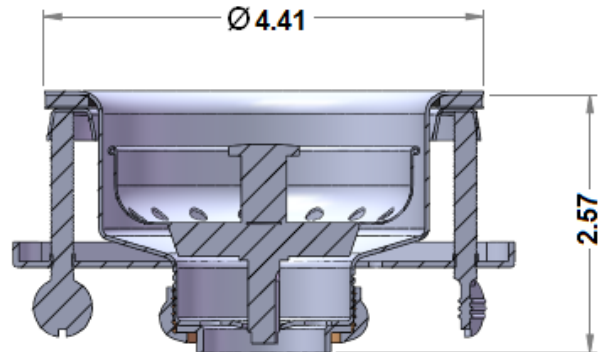
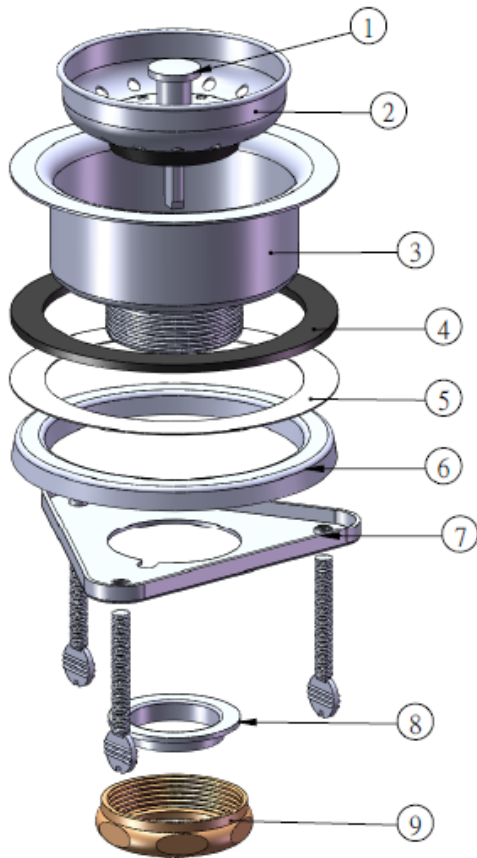


## FEATURES & BENEFITS

- Stainless Steel Sink Strainer
- Fits 3-1/2" to 4" Openings
- Wing Nuts With Screwdriver Slot
- Brass Slipnut

## MATERIAL SPECIFICATIONS

No.	Part	Material
1	Post	C.P Zinc
2	Basket	SS430
3	Body	SS430
4	Washer	Rubber
5	Washer	Paper
6	Washer	Galvanite
7	Washer	Galvanite
8	Washer	PE
9	Slip	Zinc – Yellow Chromate Dip



**MATCO-NORCA**

Global sourcing. National compliance. Local service.