

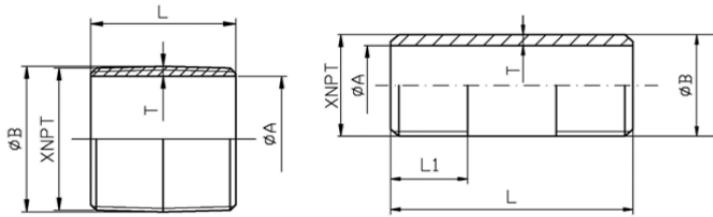
316 Stainless Steel Nipples • Spec Sheet



Material Test Reports Available

FEATURES & BENEFITS

- Stainless Steel 316/316L
- Schedule 40
- Material Test Reports (MTR'S) Available
- Stainless Steel Conforms to ASTM A312/A312M
- Dimensions & Ends Conform to ASTM A733
- Threads Conform to ASTM B1.20.1
- Meets NSF / ANSI 372 & NSF / ANSI 61
- RoHS Compliant



DIMENSIONS

Part #	Size	A	B	L	L1	T (min.)	Part #	Size	A	B	L	L1	T (min.)
SSN31600CL	1/8 X CLOSE	0.285	0.405	3/4		0.060	SSN316018	1/4 X 8	0.386	0.54	8	0.5946	0.077
SSN31601CL	1/4 X CLOSE	0.386	0.540	7/8		0.077	SSN3160110	1/4 X 10	0.386	0.54	10	0.5946	0.077
SSN31602CL	3/8 X CLOSE	0.515	0.675	1		0.080	SSN3160112	1/4 X 12	0.386	0.54	12	0.5946	0.077
SSN31603CL	1/2 X CLOSE	0.650	0.840	1-1/8		0.095	SSN31602112	3/8 X 1-1/2	0.515	0.675	1-1/2	0.6006	0.08
SSN31604CL	3/4 X CLOSE	0.852	1.050	1-3/8		0.099	SSN316022	3/8 X 2	0.515	0.675	2	0.6006	0.08
SSN31605CL	1 X CLOSE	1.083	1.315	1-1/2		0.116	SSN31602212	3/8 X 2-1/2	0.515	0.675	2-1/2	0.6006	0.08
SSN31606CL	1-1/4 X CLOSE	1.414	1.660	1-5/8		0.123	SSN316023	3/8 X 3	0.515	0.675	3	0.6006	0.08
SSN31607CL	1-1/2 X CLOSE	1.646	1.900	1-3/4		0.127	SSN31602312	3/8 X 3-1/2	0.515	0.675	3-1/2	0.6006	0.08
SSN31608CL	2 X CLOSE	2.105	2.375	2		0.135	SSN316024	3/8 X 4	0.515	0.675	4	0.6006	0.08
SSN31609CL	2-1/2 X CLOSE	2.519	2.875	2-1/2		0.178	SSN31602412	3/8 X 4-1/2	0.515	0.675	4-1/2	0.6006	0.08
SSN31610CL	3 X CLOSE	3.122	3.500	2-5/8		0.189	SSN316025	3/8 X 5	0.515	0.675	5	0.6006	0.08
SSN31611CL	4 X CLOSE	4.086	4.500	2-7/8		0.207	SSN31602512	3/8 X 5-1/2	0.515	0.675	5-1/2	0.6006	0.08
SSN31600112	1/8 X 1-1/2	0.285	0.405	1-1/2	0.3924	0.060	SSN316026	3/8 X 6	0.515	0.675	6	0.6006	0.08
SSN316002	1/8 X 2	0.285	0.405	2	0.3924	0.060	SSN316028	3/8 X 8	0.515	0.675	8	0.6006	0.08
SSN31600212	1/8 X 2-1/2	0.285	0.405	2-1/2	0.3924	0.060	SSN3160210	3/8 X 10	0.515	0.675	10	0.6006	0.08
SSN316003	1/8 X 3	0.285	0.405	3	0.3924	0.060	SSN3160212	3/8 X 12	0.515	0.675	12	0.6006	0.08
SSN31600312	1/8 X 3-1/2	0.285	0.405	3-1/2	0.3924	0.060	SSN31603112	1/2 X 1-1/2	0.65	0.84	1-1/2	0.7815	0.095
SSN316004	1/8 X 4	0.285	0.405	4	0.3924	0.060	SSN316032	1/2 X 2	0.65	0.84	2	0.7815	0.095
SSN31600412	1/8 X 4-1/2	0.285	0.405	4-1/2	0.3924	0.060	SSN31603212	1/2 X 2-1/2	0.65	0.84	2-1/2	0.7815	0.095
SSN316005	1/8 X 5	0.285	0.405	5	0.3924	0.060	SSN316033	1/2 X 3	0.65	0.84	3	0.7815	0.095
SSN31600512	1/8 X 5-1/2	0.285	0.405	5-1/2	0.3924	0.060	SSN31603312	1/2 X 3-1/2	0.65	0.84	3-1/2	0.7815	0.095
SSN316006	1/8 X 6	0.285	0.405	6	0.3924	0.060	SSN316034	1/2 X 4	0.65	0.84	4	0.7815	0.095
SSN316008	1/8 X 8	0.285	0.405	8	0.3924	0.06	SSN31603412	1/2 X 4-1/2	0.65	0.84	4-1/2	0.7815	0.095
SSN3160010	1/8 X 10	0.285	0.405	10	0.3924	0.06	SSN316035	1/2 X 5	0.65	0.84	5	0.7815	0.095
SSN3160012	1/8 X 12	0.285	0.405	12	0.3924	0.06	SSN31603512	1/2 X 5-1/2	0.65	0.84	5-1/2	0.7815	0.095
SSN316012	1/4 X 2	0.386	0.54	2	0.5946	0.077	SSN316036	1/2 X 6	0.65	0.84	6	0.7815	0.095
SSN31601212	1/4 X 2-1/2	0.386	0.54	2-1/2	0.5946	0.077	SSN316037	1/2 X 7	0.65	0.84	7	0.7815	0.095
SSN316013	1/4 X 3	0.386	0.54	3	0.5946	0.077	SSN316038	1/2 X 8	0.65	0.84	8	0.7815	0.095
SSN31601312	1/4 X 3-1/2	0.386	0.54	3-1/2	0.5946	0.077	SSN316039	1/2 X 9	0.65	0.84	9	0.7815	0.095
SSN316014	1/4 X 4	0.386	0.54	4	0.5946	0.077	SSN3160310	1/2 X 10	0.65	0.84	10	0.7815	0.095
SSN31601412	1/4 X 4-1/2	0.386	0.54	4-1/2	0.5946	0.077	SSN3160311	1/2 X 11	0.65	0.84	11	0.7815	0.095
SSN316015	1/4 X 5	0.386	0.54	5	0.5946	0.077	SSN3160312	1/2 X 12	0.65	0.84	12	0.7815	0.095
SSN31601512	1/4 X 5-1/2	0.386	0.54	5-1/2	0.5946	0.077	SSN31604112	3/4 X 1-1/2	0.852	1.05	1-1/2	0.7935	0.099
SSN316016	1/4 X 6	0.386	0.54	6	0.5946	0.077	SSN316042	3/4 X 2	0.852	1.05	2	0.7935	0.099

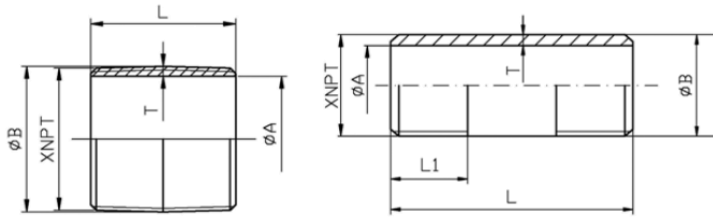
316 Stainless Steel Nipples • Spec Sheet



Material Test Reports Available

FEATURES & BENEFITS

- Stainless Steel 316/316L
- Schedule 40
- Material Test Reports (MTR'S) Available
- Stainless Steel Conforms to ASTM A312/A312M
- Dimensions & Ends Conform to ASTM A733
- Threads Conform to ASTM B1.20.1
- Meets NSF / ANSI 372 & NSF / ANSI 61
- RoHS Compliant



DIMENSIONS

Part #	Size	A	B	L	L1	T (min.)	Part #	Size	A	B	L	L1	T (min.)
SSN31604212	3/4 X 2-1/2	0.852	1.05	2-1/2	0.7935	0.099	SSN316064	1-1/4 X 4	1.414	1.66	4	1.0085	0.123
SSN31604312	3/4 X 3-1/2	0.852	1.05	3-1/2	0.7935	0.099	SSN31606412	1-1/4 X 4-1/2	1.414	1.66	4-1/2	1.0085	0.123
SSN316044	3/4 X 4	0.852	1.05	4	0.7935	0.099	SSN316065	1-1/4 X 5	1.414	1.66	5	1.0085	0.123
SSN31604412	3/4 X 4-1/2	0.852	1.05	4-1/2	0.7935	0.099	SSN31606512	1-1/4 X 5-1/2	1.414	1.66	5-1/2	1.0085	0.123
SSN316045	3/4 X 5	0.852	1.05	5	0.7935	0.099	SSN316066	1-1/4 X 6	1.414	1.66	6	1.0085	0.123
SSN31604512	3/4 X 5-1/2	0.852	1.05	5-1/2	0.7935	0.099	SSN316067	1-1/4 X 7	1.414	1.66	7	1.0085	0.123
SSN316046	3/4 X 6	0.852	1.05	6	0.7935	0.099	SSN316068	1-1/4 X 8	1.414	1.66	8	1.0085	0.123
SSN316047	3/4 X 7	0.852	1.05	7	0.7935	0.099	SSN316069	1-1/4 X 9	1.414	1.66	9	1.0085	0.123
SSN316048	3/4 X 8	0.852	1.05	8	0.7935	0.099	SSN3160610	1-1/4 X 10	1.414	1.66	10	1.0085	0.123
SSN316049	3/4 X 9	0.852	1.05	9	0.7935	0.099	SSN3160611	1-1/4 X 11	1.414	1.66	11	1.0085	0.123
SSN3160410	3/4 X 10	0.852	1.05	10	0.7935	0.099	SSN3160612	1-1/4 X 12	1.414	1.66	12	1.0085	0.123
SSN3160411	3/4 X 11	0.852	1.05	11	0.7935	0.099	SSN316072	1-1/2 X 2	1.646	1.90	2	1.0252	0.127
SSN3160412	3/4 X 12	0.852	1.05	12	0.7935	0.099	SSN31607212	1-1/2 X 2-1/2	1.646	1.90	2-1/2	1.0252	0.127
SSN316053	1 X 3	1.083	1.315	3	0.9845	0.116	SSN316073	1-1/2 X 3	1.646	1.90	3	1.0252	0.127
SSN316052	1 X 2	1.083	1.315	2	0.9845	0.116	SSN31607312	1-1/2 X31/2	1.646	1.90	3-1/2	1.0252	0.127
SSN31605212	1 X 2-1/2	1.083	1.315	2-1/2	0.9845	0.116	SSN316074	1-1/2 X 4	1.646	1.90	4	1.0252	0.127
SSN316053	1 X 3	1.083	1.315	3	0.9845	0.116	SSN31607412	1-1/2 X 4-1/2	1.646	1.90	4-1/2	1.0252	0.127
SSN31605312	1 X 3-1/2	1.083	1.315	3-1/2	0.9845	0.116	SSN316075	1-1/2 X 5	1.646	1.90	5	1.0252	0.127
SSN316054	1 X 4	1.083	1.315	4	0.9845	0.116	SSN31607512	1-1/2 X 5-1/2	1.646	1.90	5-1/2	1.0252	0.127
SSN31605412	1 X 4-1/2	1.083	1.315	4-1/2	0.9845	0.116	SSN316076	1-1/2 X 6	1.646	1.90	6	1.0252	0.127
SSN316055	1 X 5	1.083	1.315	5	0.9845	0.116	SSN316077	1-1/2 X 7	1.646	1.90	7	1.0252	0.127
SSN31605512	1 X 5-1/2	1.083	1.315	5-1/2	0.9845	0.116	SSN316078	1-1/2 X 8	1.646	1.90	8	1.0252	0.127
SSN316056	1 X 6	1.083	1.315	6	0.9845	0.116	SSN316079	1-1/2 X 9	1.646	1.90	9	1.0252	0.127
SSN316057	1 X 7	1.083	1.315	7	0.9845	0.116	SSN3160710	1-1/2 X 10	1.646	1.90	10	1.0252	0.127
SSN316058	1 X 8	1.083	1.315	8	0.9845	0.116	SSN3160711	1-1/2 X 11	1.646	1.90	11	1.0252	0.127
SSN316059	1 X 9	1.083	1.315	9	0.9845	0.116	SSN3160712	1-1/2 X 12	1.646	1.90	12	1.0252	0.127
SSN3160510	1 X 10	1.083	1.315	10	0.9845	0.116	SSN31608212	2 X 2-1/2	2.105	2.375	2-1/2	1.0582	0.135
SSN3160511	1 X 11	1.083	1.315	11	0.9845	0.116	SSN316083	2 X 3	2.105	2.375	3	1.0582	0.135
SSN3160512	1 X 12	1.083	1.315	12	0.9845	0.116	SSN31608312	2 X 3-1/2	2.105	2.375	3-1/2	1.0582	0.135
SSN316062	1-1/4 X 2	1.414	1.66	2	1.0085	0.123	SSN316084	2 X 4	2.105	2.375	4	1.0582	0.135
SSN31606212	1-1/4 X 2-1/2	1.414	1.66	2-1/2	1.0085	0.123	SSN31608412	2 X 4-1/2	2.105	2.375	4-1/2	1.0582	0.135
SSN316063	1-1/4 X 3	1.414	1.66	3	1.0085	0.123	SSN316085	2 X 5	2.105	2.375	5	1.0582	0.135
SSN31606312	1-1/4 X 3-1/2	1.414	1.66	3-1/2	1.0085	0.123	SSN31608512	2 X 5-1/2	2.105	2.375	5-1/2	1.0582	0.135

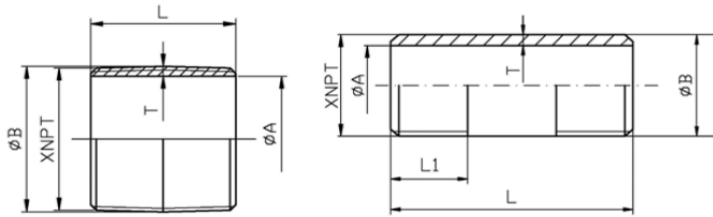
316 Stainless Steel Nipples • Spec Sheet



Material Test Reports Available

FEATURES & BENEFITS

- Stainless Steel 316/316L
- Schedule 40
- Material Test Reports (MTR'S) Available
- Stainless Steel Conforms to ASTM A312/A312M
- Dimensions & Ends Conform to ASTM A733
- Threads Conform to ASTM B1.20.1
- Meets NSF / ANSI 372 & NSF / ANSI 61
- RoHS Compliant



DIMENSIONS

Part #	Size	A	B	L	L1	T (min.)	Part #	Size	A	B	L	L1	T (min.)
SSN316086	2 X 6	2.105	2.375	6	1.0582	0.135	SSN316103	3 X 3	3.122	3.50	3	1.6337	0.189
SSN316087	2 X 7	2.105	2.375	7	1.0582	0.135	SSN31610312	3 X 3-1/2	3.122	3.50	3-1/2	1.6337	0.189
SSN316088	2 X 8	2.105	2.375	8	1.0582	0.135	SSN316104	3 X 4	3.122	3.50	4	1.6337	0.189
SSN316089	2 X 9	2.105	2.375	9	1.0582	0.135	SSN31610412	3 X 4-1/2	3.122	3.50	4-1/2	1.6337	0.189
SSN3160810	2 X 10	2.105	2.375	10	1.0582	0.135	SSN316105	3 X 5	3.122	3.50	5	1.6337	0.189
SSN3160811	2 X 11	2.105	2.375	11	1.0582	0.135	SSN31610512	3 X 5-1/2	3.122	3.50	5-1/2	1.6337	0.189
SSN3160812	2 X 12	2.105	2.375	12	1.0582	0.135	SSN316106	3 X 6	3.122	3.50	6	1.6337	0.189
SSN316093	2-1/2 X 3	2.519	2.875	3	1.5712	0.178	SSN316108	3 X 8	3.122	3.50	8	1.6337	0.189
SSN31609312	2-1/2 X 3-1/2	2.519	2.875	3-1/2	1.5712	0.178	SSN3161010	3 X 10	3.122	3.50	10	1.6337	0.189
SSN316094	2-1/2 X 4	2.519	2.875	4	1.5712	0.178	SSN3161012	3 X 12	3.122	3.50	12	1.6337	0.189
SSN31609412	2-1/2 X 4-1/2	2.519	2.875	4-1/2	1.5712	0.178	SSN316114	4 X 4	4.086	4.50	4	1.7337	0.207
SSN316095	2-1/2 X 5	2.519	2.875	5	1.5712	0.178	SSN31611412	4 X 4-1/2	4.086	4.50	4-1/2	1.7337	0.207
SSN31609512	2-1/2 X 5-1/2	2.519	2.875	5-1/2	1.5712	0.178	SSN316115	4 X 5	4.086	4.50	5	1.7337	0.207
SSN316096	2-1/2 X 6	2.519	2.875	6	1.5712	0.178	SSN316116	4 X 6	4.086	4.50	6	1.7337	0.207
SSN316098	2-1/2 X 8	2.519	2.875	8	1.5712	0.178	SSN316118	4 X 8	4.086	4.50	8	1.7337	0.207
SSN3160910	2-1/2 X 10	2.519	2.875	10	1.5712	0.178	SSN3161110	4 X 10	4.086	4.50	10	1.7337	0.207
SSN3160912	2-1/2 X 12	2.519	2.875	12	1.5712	0.178	SSN3161112	4 X 12	4.086	4.50	12	1.7337	0.207

 **MATCO-NORCA**
Global sourcing. National compliance. Local service.

CALIFORNIA 5595 Fresca Dr., La Palma CA 90623
TEXAS 1150 Silber Rd., Houston TX 77055
ILLINOIS 278 Windy Point Dr., Glendale Heights, IL 60139
GEORGIA 113 Industrial Blvd., Americus, Georgia 31709
NEW YORK PO Box 27, Rt.22, Brewster NY 10509
 WEB: www.matco-norca.com

• Phone: 866-532-8306 • Fax: 866-532-8307
 • Phone: 800-935-5456 • Fax: 713-680-2999
 • Phone: 844-412-5068 • Fax: 800-640-2252
 • Phone: 800-433-7526 • Fax: 800-533-5134
 • Phone: 800-431-2082 • Fax: 845-278-9056
 EMAIL: mail@matco-norca.com

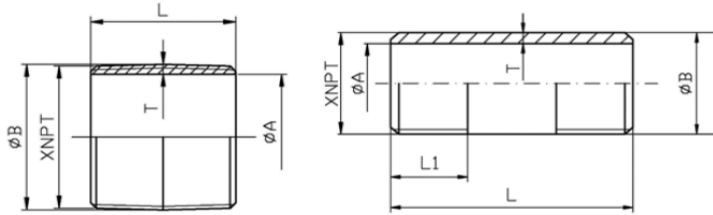
304 Stainless Steel Nipples • Spec Sheet



Material Test Reports Available

FEATURES & BENEFITS

- Stainless Steel 304
- Schedule 40
- Material Test Reports (MTR'S) Available
- Stainless Steel Conforms to ASTM A312/A312M
- Dimensions & Ends Conform to ASTM A733
- Threads Conform to ASTM B1.20.1
- Meets NSF / ANSI 372 & NSF / ANSI 61
- RoHS Compliant



DIMENSIONS

Part #	Size	A	B	L	L1	T (min.)	Part #	Size	A	B	L	L1	T (min.)
SSN30400CL	1/8 X CLOSE	0.285	0.405	3/4		0.060	SSN304015	1/4 X 5	0.386	0.54	5	0.5946	0.077
SSN30401CL	1/4 X CLOSE	0.386	0.54	7/8		0.077	SSN30401512	1/4 X 5-1/2	0.386	0.54	5-1/2	0.5946	0.077
SSN30402CL	3/8 X CLOSE	0.515	0.675	1		0.080	SSN304016	1/4 X 6	0.386	0.54	6	0.5946	0.077
SSN30403CL	1/2 X CLOSE	0.65	0.84	1-1/8		0.095	SSN304018	1/4 X 8	0.386	0.54	8	0.5946	0.077
SSN30404CL	3/4 X CLOSE	0.852	1.05	1-3/8		0.099	SSN3040110	1/4 X 10	0.386	0.54	10	0.5946	0.077
SSN30405CL	1 X CLOSE	1.083	1.315	1-1/2		0.116	SSN3040112	1/4 X 12	0.386	0.54	12	0.5946	0.077
SSN30406CL	1-1/4 X CLOSE	1.414	1.66	1-5/8		0.123	SSN30402112	3/8 X 1-1/2	0.515	0.675	1-1/2	0.6006	0.08
SSN30407CL	1-1/2 X CLOSE	1.646	1.90	1-3/4		0.127	SSN304022	3/8 X 2	0.515	0.675	2	0.6006	0.08
SSN30408CL	2 X CLOSE	2.105	2.375	2		0.135	SSN30402212	3/8 X 2-1/2	0.515	0.675	2-1/2	0.6006	0.08
SSN30409CL	2-1/2 X CLOSE	2.519	2.875	2-1/2		0.178	SSN304023	3/8 X 3	0.515	0.675	3	0.6006	0.08
SSN30410CL	3 X CLOSE	3.122	3.50	2-5/8		0.189	SSN30402312	3/8 X 3-1/2	0.515	0.675	3-1/2	0.6006	0.08
SSN30411CL	4 X CLOSE	4.086	4.50	2-7/8		0.207	SSN304024	3/8 X 4	0.515	0.675	4	0.6006	0.08
SSN30413CL	6 X CLOSE	6.135	6.625	3-1/8		0.245	SSN30402412	3/8 X 4-1/2	0.515	0.675	4-1/2	0.6006	0.08
SSN30400112	1/8 X 1-1/2	0.285	0.405	1-1/2	0.3924	0.06	SSN304025	3/8 X 5	0.515	0.675	5	0.6006	0.08
SSN304002	1/8 X 2	0.285	0.405	2	0.3924	0.06	SSN30402512	3/8 X 5-1/2	0.515	0.675	5-1/2	0.6006	0.08
SSN30400212	1/8 X 2-1/2	0.285	0.405	2-1/2	0.3924	0.06	SSN304026	3/8 X 6	0.515	0.675	6	0.6006	0.08
SSN304003	1/8 X 3	0.285	0.405	3	0.3924	0.06	SSN304028	3/8 X 8	0.515	0.675	8	0.6006	0.08
SSN30400312	1/8 X 3-1/2	0.285	0.405	3-1/2	0.3924	0.06	SSN3040210	3/8 X 10	0.515	0.675	10	0.6006	0.08
SSN304004	1/8 X 4	0.285	0.405	4	0.3924	0.06	SSN3040211	3/8 X 11	0.515	0.675	11	0.6006	0.08
SSN30400412	1/8 X 4-1/2	0.285	0.405	4-1/2	0.3924	0.06	SSN3040212	3/8 X 12	0.515	0.675	12	0.6006	0.08
SSN304005	1/8 X 5	0.285	0.405	5	0.3924	0.06	SSN30403112	1/2 X 1-1/2	0.65	0.84	1-1/2	0.7815	0.095
SSN30400512	1/8 X 5-1/2	0.285	0.405	5-1/2	0.3924	0.06	SSN304032	1/2 X 2	0.65	0.84	2	0.7815	0.095
SSN304006	1/8 X 6	0.285	0.405	6	0.3924	0.06	SSN30403212	1/2X 2-1/2	0.65	0.84	2-1/2	0.7815	0.095
SSN304008	1/8 X 8	0.285	0.405	8	0.3924	0.06	SSN304033	1/2 X 3	0.65	0.84	3	0.7815	0.095
SSN3040010	1/8 X 10	0.285	0.405	10	0.3924	0.06	SSN30403312	1/2 X 3-1/2	0.65	0.84	3-1/2	0.7815	0.095
SSN3040012	1/8 X 12	0.285	0.405	12	0.3924	0.06	SSN304034	1/2 X 4	0.65	0.84	4	0.7815	0.095
SSN30401112	1/4 X 1-1/2	0.386	0.54	1-1/2	0.5946	0.077	SSN30403412	1/2 X 4-1/2	0.65	0.84	4-1/2	0.7815	0.095
SSN304012	1/4 X 2	0.386	0.54	2	0.5946	0.077	SSN304035	1/2 X 5	0.65	0.84	5	0.7815	0.095
SSN30401212	1/4 X 2-1/2	0.386	0.54	2-1/2	0.5946	0.077	SSN30403512	1/2 X 5-1/2	0.65	0.84	5-1/2	0.7815	0.095
SSN304013	1/4 X 3	0.386	0.54	3	0.5946	0.077	SSN304036	1/2 X 6	0.65	0.84	6	0.7815	0.095
SSN30401312	1/4 X 3-1/2	0.386	0.54	3-1/2	0.5946	0.077	SSN304037	1/2 X 7	0.65	0.84	7	0.7815	0.095
SSN304014	1/4X 4	0.386	0.54	4	0.5946	0.077	SSN304038	1/2 X 8	0.65	0.84	8	0.7815	0.095
SSN30401412	1/4X 4-1/2	0.386	0.54	4-1/2	0.5946	0.077	SSN304039	1/2 X 9	0.65	0.84	9	0.7815	0.095

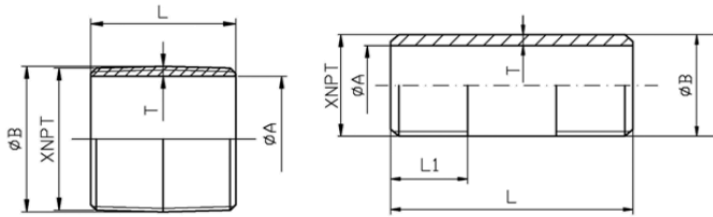
304 Stainless Steel Nipples • Spec Sheet



Material Test Reports Available

FEATURES & BENEFITS

- Stainless Steel 304
- Schedule 40
- Material Test Reports (MTR'S) Available
- Stainless Steel Conforms to ASTM A312/A312M
- Dimensions & Ends Conform to ASTM A733
- Threads Conform to ASTM B1.20.1
- Meets NSF / ANSI 372 & NSF / ANSI 61
- RoHS Compliant



DIMENSIONS

Part #	Size	A	B	L	L1	T (min.)	Part #	Size	A	B	L	L1	T (min.)
SSN3040310	1/2 X 10	0.65	0.84	10	0.7815	0.095	SSN3040511	1 X 11	1.083	1.315	11	0.9845	0.116
SSN3040311	1/2 X 11	0.65	0.84	11	0.7815	0.095	SSN3040512	1 X 12	1.083	1.315	12	0.9845	0.116
SSN3040312	1/2 X 12	0.65	0.84	12	0.7815	0.095	SSN304062	1-1/4 X 2	1.414	1.66	2	1.0085	0.123
SSN30404112	3/4 X 1-1/2	0.852	1.05	1-1/2	0.7935	0.099	SSN30406212	1-1/4 X 2-1/2	1.414	1.66	2-1/2	1.0085	0.123
SSN304042	3/4 X 2	0.852	1.05	2	0.7935	0.099	SSN304063	1-1/4 X 3	1.414	1.66	3	1.0085	0.123
SSN30404212	3/4 X 2-1/2	0.852	1.05	2-1/2	0.7935	0.099	SSN30406312	1-1/4 X 3-1/2	1.414	1.66	3-1/2	1.0085	0.123
SSN304043	3/4 X 3	0.852	1.05	3	0.7935	0.099	SSN304064	1-1/4 X 4	1.414	1.66	4	1.0085	0.123
SSN30404312	3/4 X 3-1/2	0.852	1.05	3-1/2	0.7935	0.099	SSN30406412	1-1/4 X 4-1/2	1.414	1.66	4-1/2	1.0085	0.123
SSN304044	3/4 X 4	0.852	1.05	4	0.7935	0.099	SSN304065	1-1/4 X 5	1.414	1.66	5	1.0085	0.123
SSN30404412	3/4 X 4-1/2	0.852	1.05	4-1/2	0.7935	0.099	SSN30406512	1-1/4 X 5-1/2	1.414	1.66	5-1/2	1.0085	0.123
SSN304045	3/4 X 5	0.852	1.05	5	0.7935	0.099	SSN304066	1-1/4 X 6	1.414	1.66	6	1.0085	0.123
SSN30404512	3/4 X 5-1/2	0.852	1.05	5-1/2	0.7935	0.099	SSN304067	1-1/4 X 7	1.414	1.66	7	1.0085	0.123
SSN304046	3/4 X 6	0.852	1.05	6	0.7935	0.099	SSN304068	1-1/4 X 8	1.414	1.66	8	1.0085	0.123
SSN304047	3/4 X 7	0.852	1.05	7	0.7935	0.099	SSN304069	1-1/4 X 9	1.414	1.66	9	1.0085	0.123
SSN304048	3/4 X 8	0.852	1.05	8	0.7935	0.099	SSN3040610	1-1/4 X 10	1.414	1.66	10	1.0085	0.123
SSN304049	3/4 X 9	0.852	1.05	9	0.7935	0.099	SSN3040611	1-1/4 X 11	1.414	1.66	11	1.0085	0.123
SSN3040410	3/4 X 10	0.852	1.05	10	0.7935	0.099	SSN3040612	1-1/4 X 12	1.414	1.66	12	1.0085	0.123
SSN3040411	3/4 X 11	0.852	1.05	11	0.7935	0.099	SSN304072	1-1/2 X 2	1.646	1.90	2	1.0252	0.127
SSN3040412	3/4 X 12	0.852	1.05	12	0.7935	0.099	SSN30407212	1-1/2 X 2-1/2	1.646	1.90	2-1/2	1.0252	0.127
SSN304052	1 X 2	1.083	1.315	2	0.9845	0.116	SSN304073	1-1/2 X 3	1.646	1.90	3	1.0252	0.127
SSN30405212	1 X 2-1/2	1.083	1.315	2-1/2	0.9845	0.116	SSN30407312	1-1/2 X 3-1/2	1.646	1.90	3-1/2	1.0252	0.127
SSN304053	1 X 3	1.083	1.315	3	0.9845	0.116	SSN304074	1-1/2 X 4	1.646	1.90	4	1.0252	0.127
SSN30405312	1 X 3-1/2	1.083	1.315	3-1/2	0.9845	0.116	SSN30407412	1-1/2 X 4-1/2	1.646	1.90	4-1/2	1.0252	0.127
SSN304054	1 X 4	1.083	1.315	4	0.9845	0.116	SSN304075	1-1/2 X 5	1.646	1.90	5	1.0252	0.127
SSN30405412	1 X 4-1/2	1.083	1.315	4-1/2	0.9845	0.116	SSN30407512	1-1/2 X 5-1/2	1.646	1.90	5-1/2	1.0252	0.127
SSN304055	1 X 5	1.083	1.315	5	0.9845	0.116	SSN304076	1-1/2 X 6	1.646	1.90	6	1.0252	0.127
SSN30405512	1 X 5-1/2	1.083	1.315	5-1/2	0.9845	0.116	SSN304077	1-1/2 X 7	1.646	1.90	7	1.0252	0.127
SSN304056	1 X 6	1.083	1.315	6	0.9845	0.116	SSN304078	1-1/2 X 8	1.646	1.90	8	1.0252	0.127
SSN304057	1 X 7	1.083	1.315	7	0.9845	0.116	SSN304079	1-1/2 X 9	1.646	1.90	9	1.0252	0.127
SSN304058	1 X 8	1.083	1.315	8	0.9845	0.116	SSN3040710	1-1/2 X 10	1.646	1.90	10	1.0252	0.127
SSN304059	1 X 9	1.083	1.315	9	0.9845	0.116	SSN3040711	1-1/2 X 11	1.646	1.90	11	1.0252	0.127
SSN3040510	1 X 10	1.083	1.315	10	0.9845	0.116	SSN3040712	1-1/2 X 12	1.646	1.90	12	1.0252	0.127

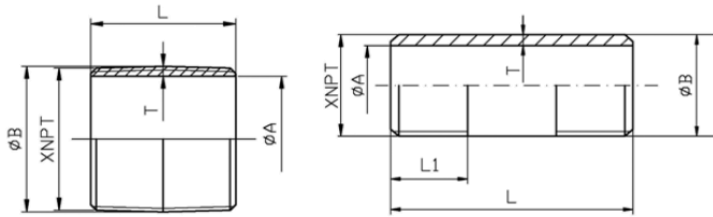
304 Stainless Steel Nipples • Spec Sheet



Material Test Reports Available

FEATURES & BENEFITS

- Stainless Steel 304
- Schedule 40
- Material Test Reports (MTR'S) Available
- Stainless Steel Conforms to ASTM A312/A312M
- Dimensions & Ends Conform to ASTM A733
- Threads Conform to ASTM B1.20.1
- Meets NSF / ANSI 372 & NSF / ANSI 61
- RoHS Compliant



DIMENSIONS

Part #	Size	A	B	L	L1	T (min.)	Part #	Size	A	B	L	L1	T (min.)
SSN30408212	2 X 2-1/2	2.11	2.38	2-1/2	1.06	0.135	SSN304103	3 X 3	3.12	3.50	3	1.63	0.189
SSN304083	2 X 3	2.11	2.38	3	1.06	0.135	SSN30410312	3 X 3-1/2	3.12	3.50	3-1/2	1.63	0.189
SSN30408312	2 X 3-1/2	2.11	2.38	3-1/2	1.06	0.135	SSN304104	3 X 4	3.12	3.50	4	1.63	0.189
SSN304084	2 X 4	2.11	2.38	4	1.06	0.135	SSN30410412	3 X 4-1/2	3.12	3.50	4-1/2	1.63	0.189
SSN30408412	2 X 4-1/2	2.11	2.38	4-1/2	1.06	0.135	SSN304105	3 X 5	3.12	3.50	5	1.63	0.189
SSN304085	2 X 5	2.11	2.38	5	1.06	0.135	SSN30410512	3 X 5-1/2	3.12	3.50	5-1/2	1.63	0.189
SSN30408512	2 X 5-1/2	2.11	2.38	5-1/2	1.06	0.135	SSN304106	3 X 6	3.12	3.50	6	1.63	0.189
SSN304086	2 X 6	2.11	2.38	6	1.06	0.135	SSN304108	3 X 8	3.12	3.50	8	1.63	0.189
SSN304087	2 X 7	2.105	2.375	7	1.0582	0.135	SSN3041010	3 X 10	3.12	3.50	10	1.63	0.189
SSN304088	2 X 8	2.105	2.375	8	1.0582	0.135	SSN3041012	3 X 12	3.12	3.50	12	1.63	0.189
SSN304089	2 X 9	2.105	2.375	9	1.0582	0.135	SSN304114	4 X 4	4.09	4.50	4	1.73	0.207
SSN3040810	2 X 10	2.105	2.375	10	1.0582	0.135	SSN30411412	4 X 4-1/2	4.09	4.50	4-1/2	1.73	0.207
SSN3040811	2 X 11	2.105	2.375	11	1.0582	0.135	SSN304115	4 X 5	4.09	4.50	5	1.73	0.207
SSN3040812	2 X 12	2.105	2.375	12	1.0582	0.135	SSN304116	4 X 6	4.09	4.50	6	1.73	0.207
SSN304093	2-1/2 X 3	2.52	2.88	3	1.57	0.178	SSN304118	4 X 8	4.09	4.50	8	1.73	0.207
SSN30409312	2-1/2 X 3-1/2	2.52	2.88	3-1/2	1.57	0.178	SSN3041110	4 X 10	4.09	4.50	10	1.73	0.207
SSN304094	2-1/2 X 4	2.52	2.88	4	1.57	0.178	SSN3041112	4 X 12	4.09	4.50	12	1.73	0.207
SSN30409412	2-1/2 X 4-1/2	2.52	2.88	4-1/2	1.57	0.178	SSN304136	6 X 6	6.14	6.63	6	1.95	0.245
SSN304095	2-1/2 X 5	2.52	2.88	5	1.57	0.178	SSN3041312	6 X 12	6.14	6.63	12	1.95	0.245
SSN30409512	2-1/2 X 5-1/2	2.52	2.88	5-1/2	1.57	0.178	SSN304136	6 X 6	6.14	6.63	6	1.95	0.245
SSN304096	2-1/2 X 6	2.52	2.88	6	1.57	0.178	SSN3041312	6 X 12	6.14	6.63	12	1.95	0.245
SSN304098	2-1/2 X 8	2.52	2.88	8	1.57	0.178							



CALIFORNIA 5595 Fresca Dr., La Palma CA 90623
TEXAS 1150 Silber Rd., Houston TX 77055
ILLINOIS 278 Windy Point Dr., Glendale Heights, IL 60139
GEORGIA 113 Industrial Blvd., Americus, Georgia 31709
NEW YORK PO Box 27, Rt.22, Brewster NY 10509
 WEB: www.matco-norca.com

• Phone: 866-532-8306 • Fax: 866-532-8307
 • Phone: 800-935-5456 • Fax: 713-680-2999
 • Phone: 844-412-5068 • Fax: 800-640-2252
 • Phone: 800-433-7526 • Fax: 800-533-5134
 • Phone: 800-431-2082 • Fax: 845-278-9056
 EMAIL: mail@matco-norca.com