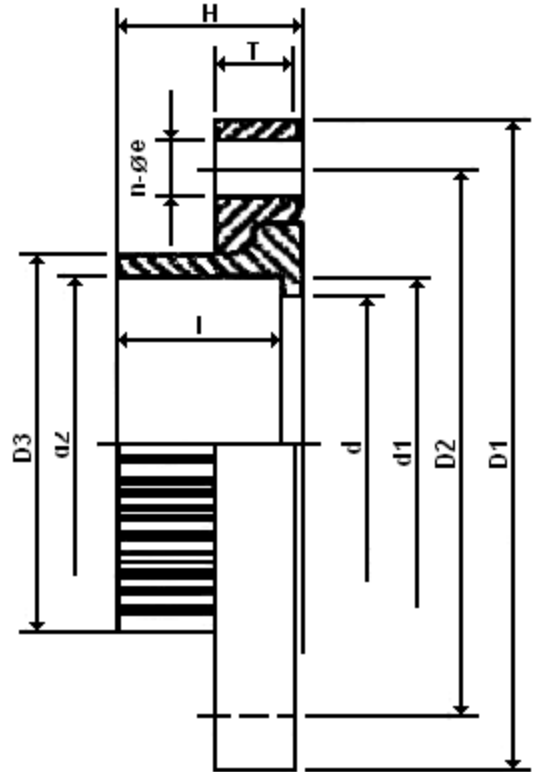


# PVCF Van Stone Flange • Spec Sheet



## FEATURES & BENEFITS

- Loose Ring Flange
- Schedule 80
- Socket (Swivel) Connection
- Socket Diameter Conforms to ASTM D-2467
- ANSI B16.5
- Class 150
- 150 PSI @ 73.4° F
- Flanged Sizes 2" – 10"

## DIMENSIONS

Part #	Size	D1	D2	D3	d	d1	d2	H	T	l	n-øe
PVCF08	2"	5.99	4.77	2.99	2.01	2.37	2.39	1.69	0.19	1.50	4-19
PVCF10	3"	7.56	5.99	4.26	3.03	3.49	3.52	2.13	1.02	1.88	4-19
PVCF11	4"	9.02	7.53	5.24	4.02	4.49	4.52	2.52	1.10	2.25	8-19
PVCF13	6"	11.19	9.50	7.53	6.15	6.62	6.66	3.35	1.26	3.00	8-22
PVCF14	8"	13.51	11.74	9.38	8.04	8.62	8.67	4.65	1.42	4.02	8-22
PVCF15	10"	16.00	14.26	12.21	10.09	10.75	10.80	5.91	1.65	4.85	12-24



Global sourcing. National compliance. Local service.

**CALIFORNIA** 5595 Fresca Dr., La Palma CA 90623  
**TEXAS** 1150 Silber Rd., Houston TX 77055  
**ILLINOIS** 278 Windy Point Dr., Glendale Heights, IL 60139  
**GEORGIA** 113 Industrial Blvd., Americus, Georgia 31709  
**NEW YORK** PO Box 27, Rt.22, Brewster NY 10509  
 WEB: [www.matco-norca.com](http://www.matco-norca.com)

• Phone: 866-532-8306 • Fax: 866-532-8307  
 • Phone: 800-935-5456 • Fax: 713-680-2999  
 • Phone: 844-412-5068 • Fax: 800-640-2252  
 • Phone: 800-433-7526 • Fax: 800-533-5134  
 • Phone: 800-431-2082 • Fax: 845-278-9056  
 EMAIL: [mail@matco-norca.com](mailto:mail@matco-norca.com)