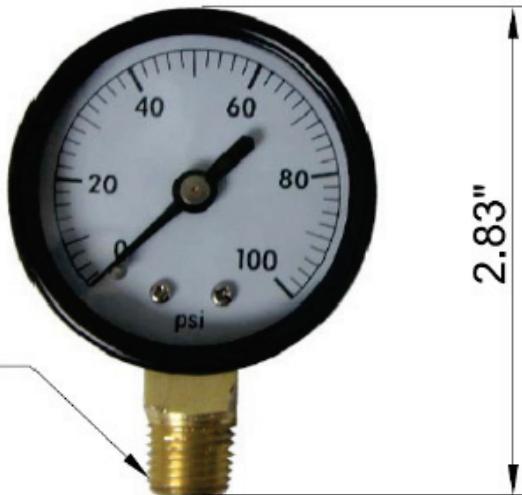


PG-100LF Pressure Gauge • Spec Sheet



FEATURES & BENEFITS

- Lead Free
- 1/4" MIP x 2" Diameter
- 100 PSI
- Brass Sockets Standard
- Threaded Ends Comply w/ ANSI B1.20.1
- Product Complies w/ AB1953



MATERIAL SPECIFICATIONS

Part	Material
Gauge Face	Various
Connector	Brass C89550

* These product complies with 0.25% weighted average lead content on wetted surfaces in accordance with Safe Water Drinking Act (SDWA) / Federal Public Law No. 111-380.



Global sourcing. National compliance. Local service.

CALIFORNIA 5593 Fresca Dr., La Palma CA 90623 • Toll Free: 866-532-8306 • Fax: 866-532-8307
TEXAS 1150 Silber Rd., Houston TX 77055 • Toll Free: 800-935-5456 • Fax: 713-680-2999
NEW YORK PO Box 27, Rt. 22, Brewster NY 10509 • Toll Free: 800-431-2082 • Fax: 845-278-9056
 WEB: www.matco-norca.com EMAIL: mail@matco-norca.com