

# Groove Couplings - Flexible Style • Spec Sheet

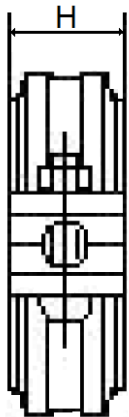
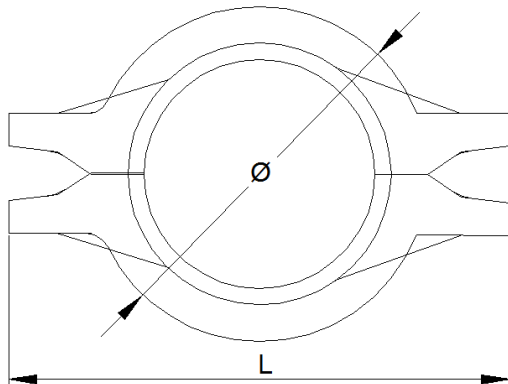


## FEATURES & BENEFITS

- Groove Couplings
- Painted and Galvanized
- 300 PSI
- UL/FM Approved
- Ductile Iron Body ASTM A536
- EPDM Gaskets

**GCPFP** –Painted

**GCPFG** –Galvanized



## DIMENSIONS

Part #	Size	Pipe O.D	Bolt Size No.-Size (mm)	Ø	L	H
GCPFP05 GCPFG05	1"	1.33	2-M10x45	2.19	3.86	1.73
GCPFP06 GCPFG06	1-1/4"	1.67	2-M10x45	2.60	4.21	1.73
GCPFP07 GCPFG07	1-1/2"	1.90	2-M10x45	2.91	4.53	1.73
GCPFP08 GCPFG08	2"	2.37	2-M10x55	3.31	4.88	1.73
GCPFP09 GCPFG09	2-1/2"	2.88	2-M10x55	3.86	5.43	1.77
GCPFP10 GCPFG10	3"	3.50	2-M10x60	4.49	6.18	1.77
GCPFP11 GCPFG11	4"	4.50	2-M10x60	5.51	7.36	1.89
GCPFP13 GCPFG13	6"	6.63	2-M12x75	7.76	10.04	2.01
GCPFP14 GCPFG14	8"	8.63	2-M16x100	10.00	12.99	2.28
GCPFP15 GCPFG15	10"	10.75	2-M20x100	12.87	17.52	2.44
GCPFP16 GCPFG16	12"	12.75	2-M20x120	14.57	17.99	2.44

**MATCO-NORCA**

Global sourcing. National compliance. Local service.

**CALIFORNIA** 5595 Fresca Dr., La Palma CA 90623  
**TEXAS** 1150 Silber Rd., Houston TX 77055  
**ILLINOIS** 278 Windy Point Dr., Glendale Heights, IL 60139  
**GEORGIA** 113 Industrial Blvd., Americus, Georgia 31709  
**NEW YORK** PO Box 27, Rt.22, Brewster NY 10509  
 WEB: [www.matco-norca.com](http://www.matco-norca.com)

• Phone: 866-532-8306 • Fax: 866-532-8307  
 • Phone: 800-935-5456 • Fax: 713-680-2999  
 • Phone: 844-412-5068 • Fax: 800-640-2252  
 • Phone: 800-433-7526 • Fax: 800-533-5134  
 • Phone: 800-431-2082 • Fax: 845-278-9056  
 EMAIL: [mail@matco-norca.com](mailto:mail@matco-norca.com)