

Cast Brass Sweat Adapter Fittings • Spec Sheet



*Product will have LF imprinted on the body for Lead Free

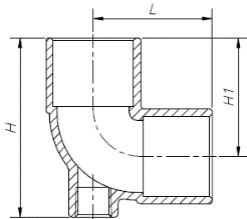
FEATURES & BENEFITS

- Lead Free Cast Brass*
- Primarily used for heating systems as a transition application

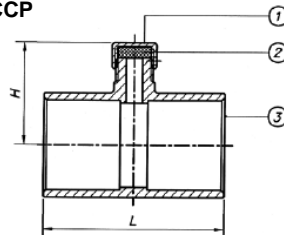
MATERIAL SPECIFICATIONS

Part	Material
Body	Brass C89550

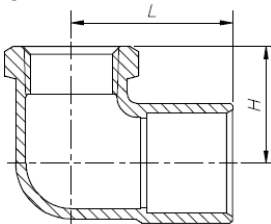
BBT



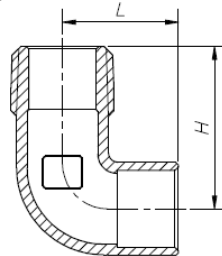
CCP



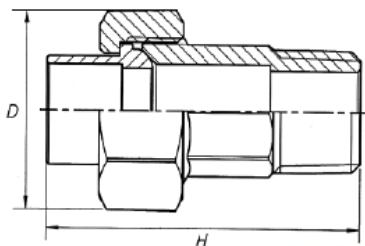
CLF



CLM



CUN



DIMENSIONS

Part #	Size	L	H	H1
BBT03LF	1/2" C X 1/8" FIP X 1/2" C	0.95	1.52	0.95
BBT04LF	3/4" C X 1/8" FIP X 3/4" C	1.30	1.97	1.30

Part #	Size	L	H
CCP03VLF	1/2" C X 1/2" C	0.87	1.27
CCP04VLF	3/4" C X 1/2" C	1.00	1.77

Part #	Size	L	H
CLF0303LF	1/2" C X 1/2" FIP	1.08	0.89
CLF0403LF	3/4" C X 1/2" FIP	1.38	1.02
CLF0404LF	3/4" C X 3/4" FIP	1.40	1.08
CLM0303LF	1/2" C X 1/2" MIP	0.95	1.32
CLM0404LF	3/4" C X 3/4" MIP	1.20	1.48

Part #	Size	D	H
CUN03MLF	1/2" MIP X 1/2" C	1.35	2.15
CUN04MLF	3/4" MIP X 3/4" C	1.64	2.68



Global sourcing. National compliance. Local service.

CALIFORNIA 5593 Fresca Dr., La Palma CA 90623 • Toll Free: 866-532-8306 • Fax: 866-532-8307
TEXAS 1150 Silber Rd., Houston TX 77055 • Toll Free: 800-935-5456 • Fax: 713-680-2999
NEW YORK PO Box 27, Rt. 22, Brewster NY 10509 • Toll Free: 800-431-2082 • Fax: 845-278-9056
 WEB: www.matco-norca.com EMAIL: mail@matco-norca.com

Cast Brass Sweat Adapter Fittings • Spec Sheet



*Product will have LF imprinted on the body for Lead Free

FEATURES & BENEFITS

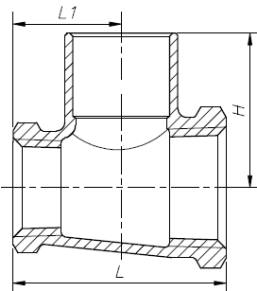
- Lead Free Cast Brass*
- Primarily used for heating systems as a transition application

MATERIAL SPECIFICATIONS

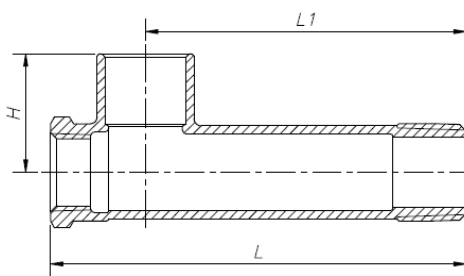
Part	Material
Body	Brass C89550

DIMENSIONS

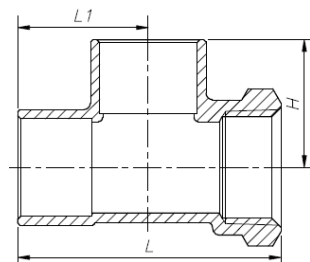
CRTF



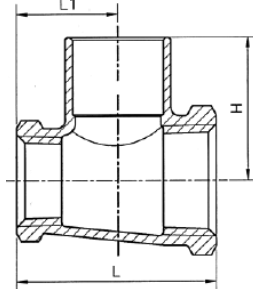
CRTFM



CTF



CTFT



Part #	Size	L	H	L1
CRTF030304LF	1/2" IP X 1/2" IP X 3/4" C	1.93	1.29	0.97
CRTF0304T03LF	1/2" C X 3/4" FIP X 1/2" C	2.11	0.99	0.93
CRTF040303LF	3/4" IP X 1/2" IP X 1/2" C	1.71	1.17	0.83
CRTF040304LF	3/4" IP X 1/2" IP X 3/4" C	1.93	1.40	0.98
CRTF0403LF	3/4" C X 3/4" X C 1/2" FIP	2.64	0.94	1.32
CRTF0403T04LF	3/4" C X 1/2" FIP X 3/4" C	2.23	1.26	1.30
CRTF0503LF	1" C X 1" C X 1/2" FIP	2.91	1.15	1.45
CRTF0503T05LF	1" C X 1/2" FIP X 1" C	2.76	1.67	1.66
CRTF0504LF	1" C X 1" C X 3/4" FIP	2.93	1.18	1.47
CRTF0504T05LF	1" C X 3/4" FIP X 1" C	2.84	1.57	1.66
CRTF0603LF	1-1/4" C X 1-1/4" C X 1/2" FIP	3.11	1.21	1.56
CRTF0604LF	1-1/4" C X 1-1/4" C X 3/4" FIP	3.31	1.36	1.65
CRTF0703LF	1-1/2" C X 1-1/2" C X 1/2" FIP	3.49	1.40	1.75
CRTF0704LF	1-1/2" C X 1-1/2" C X 3/4" FIP	3.57	1.44	1.78
CRTFM040304LF	3/4" MIP X 1/2" FIP X 3/4" C	4.48	1.27	1.02
CTF0303LF	1/2" C X 1/2" C X 1/2" FIP	2.09	0.89	1.04
CTF03T03LF	1/2" C X 1/2" FIP X 1/2" C	1.77	0.99	0.90
CTF0404LF	3/4" C X 3/4" C X 3/4" FIP	2.76	0.96	1.38
CTF04T04LF	3/4" C X 3/4" FIP X 3/4" C	2.38	1.15	1.18
CTFT04T04LF	3/4" FIP X 3/4" FIP X 3/4" C	1.75	1.43	0.88



Global sourcing. National compliance. Local service.

CALIFORNIA 5593 Fresca Dr., La Palma CA 90623 • Toll Free: 866-532-8306 • Fax: 866-532-8307
TEXAS 1150 Silber Rd., Houston TX 77055 • Toll Free: 800-935-5456 • Fax: 713-680-2999
NEW YORK PO Box 27, Rt. 22, Brewster NY 10509 • Toll Free: 800-431-2082 • Fax: 845-278-9056
 WEB: www.matco-norca.com EMAIL: mail@matco-norca.com