

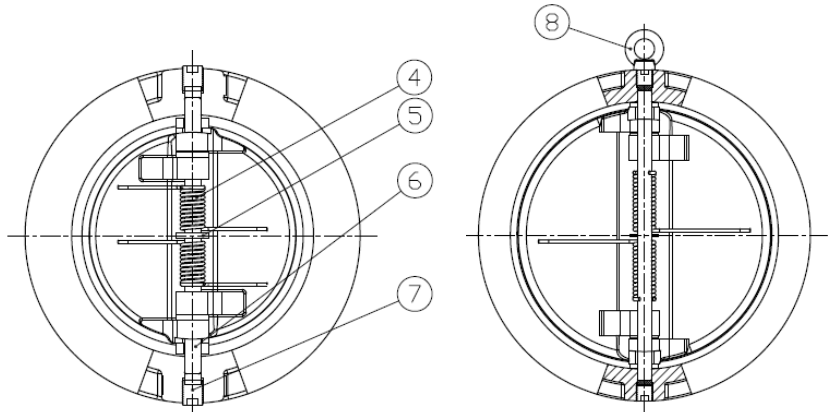
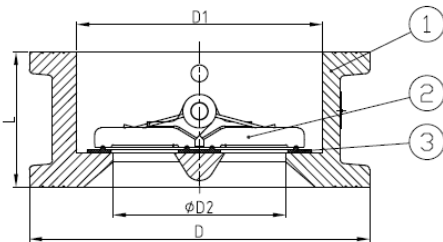
CVC Ductile Iron Check Valve • Spec Sheet



FEATURES & BENEFITS

- Check Valve-Wafer Style Body
- 300 WOG
- Spring Loaded Double Disc
- 4", 6", 8" Approved as Chemigation Valve
- Suitable for Vertical & Horizontal Installation
- Fits Flanges that Conform to ANSI B16.1
- Fusion Bonded Epoxy Coating ANSI/AWWA C550
- NSF/ANSI 61
- Sizes 2" -16"

Install between Class 125 flanges. Install 5 pipe diameters minimum downstream from pump discharge or elbow to avoid flow turbulence.



DIMENSIONS

Size	Part #	L	D	D1	D2
2"	CVC-2	2.13	4.21	2.52	1.81
2-1/2"	CVC-2.5	2.13	5.00	3.07	2.36
3"	CVC-3	2.24	5.59	3.70	2.76
4"	CVC-4	2.52	6.38	4.61	3.31
5"	CVC-5	2.76	7.56	5.71	4.53
6"	CVC-6	2.99	8.58	6.69	5.28
8"	CVC-8	3.74	10.75	8.82	7.24
10"	CVC-10	4.25	12.91	10.43	8.66
12"	CVC-12	5.63	16.02	12.20	10.24
14"	CVC-14	7.24	17.24	14.17	11.89
16"	CVC-16	7.56	20.12	16.14	13.78

MATERIAL SPECIFICATIONS

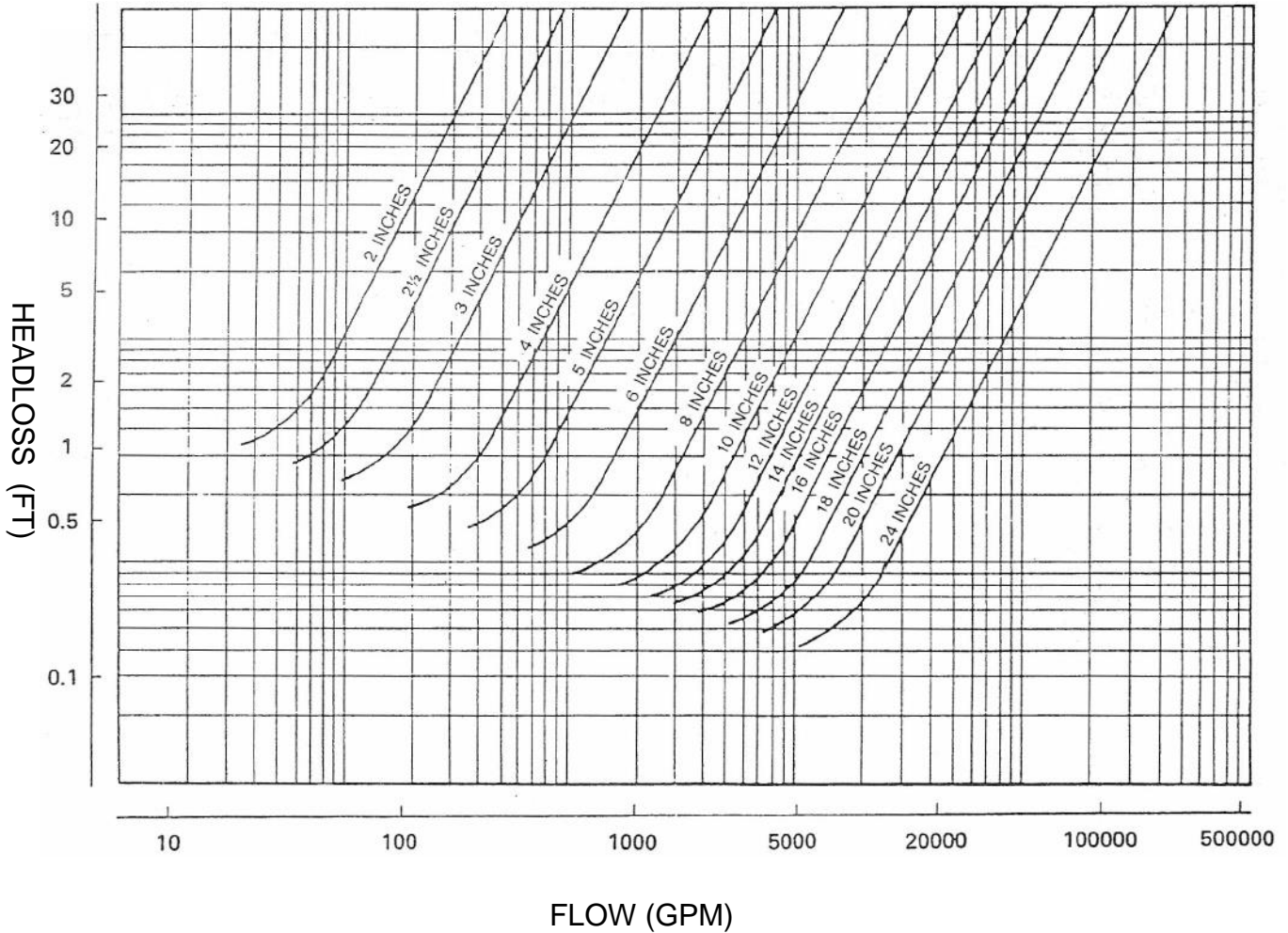
No.	Part	Material
1	Body	Ductile Iron ASTM 6-45-12
2	Disc	Aluminum Bronze C954
3	Seat	BUNA-N
4	Spring	Stainless Steel 304
5	Washer	PTFE
6	Hinge Pin	Stainless Steel 410
7	Hexagon Socket Screw	Carbon Steel Zinc Plated
8	Eye Bolt	Carbon Steel Zinc Plated

 **MATCO-NORCA**
Global sourcing. National compliance. Local service.

CALIFORNIA 5595 Fresca Dr., La Palma CA 90623
TEXAS 1150 Silber Rd., Houston TX 77055
ILLINOIS 278 Windy Point Dr., Glendale Heights, IL 60139
GEORGIA 113 Industrial Blvd., Americus, Georgia 31709
NEW YORK PO Box 27, Rt.22, Brewster NY 10509
 WEB: www.matco-norca.com

• Phone: 866-532-8306 • Fax: 866-532-8307
 • Phone: 800-935-5456 • Fax: 713-680-2999
 • Phone: 844-412-5068 • Fax: 800-640-2252
 • Phone: 800-433-7526 • Fax: 800-533-5134
 • Phone: 800-431-2082 • Fax: 845-278-9056
 EMAIL: mail@matco-norca.com

CVC Ductile Iron Check Valve • Flow Chart



CALIFORNIA	5595 Fresca Dr., La Palma CA 90623	• Phone: 866-532-8306	• Fax: 866-532-8307
TEXAS	1150 Silber Rd., Houston TX 77055	• Phone: 800-935-5456	• Fax: 713-680-2999
ILLINOIS	278 Windy Point Dr., Glendale Heights, IL 60139	• Phone: 844-412-5068	• Fax: 800-640-2252
GEORGIA	113 Industrial Blvd., Americus, Georgia 31709	• Phone: 800-433-7526	• Fax: 800-533-5134
NEW YORK	PO Box 27, Rt.22, Brewster NY 10509	• Phone: 800-431-2082	• Fax: 845-278-9056
WEB: www.matco-norca.com		EMAIL: mail@matco-norca.com	