

CL-312CH Heavy Duty Wallmount Kitchen Faucet • Spec Sheet



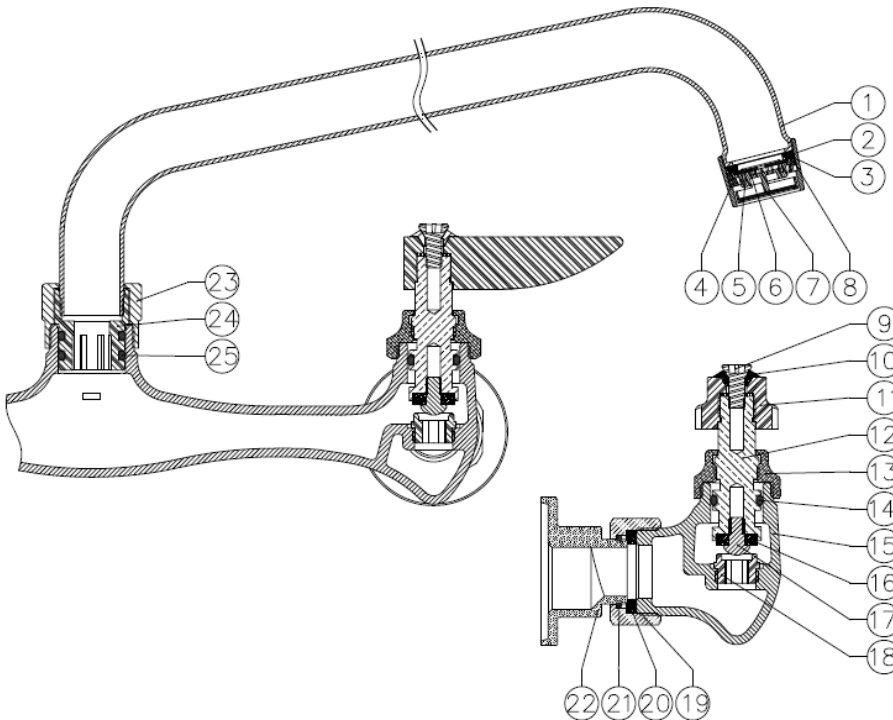
FEATURES & BENEFITS

- 8" Two Handle
- Metal Lever Handles
- 12" Cast Spout
- Chrome
- UPC & ADA Approved

MATERIAL SPECIFICATIONS

No.	Part	Material
1	Outlet	Brass C37700
2	Gasket	EPDM
3	Cap	Brass C37700
4	Steel Bridge	POM
5	Cover	POM
6	Gasket	POM
7	Wire Mesh	Stainless Steel 304
8	Plastic Sheet	POM
9	Screw	Stainless Steel 304
10	Washer	ABS
11	Handwheel	Zinc
12	Stem	Brass C89550
13	Cap Nut	Brass C37700
14	O-Ring	EPDM
15	Body	Brass C89550
16	Gasket	EPDM
17	Crossed Screw	Brass C89550
18	Check Core	Brass C89550
19	Nut	Brass C37700
20	Gasket	EPDM
21	Buckle	Stainless Steel 304
22	Connector	Brass C89550
23	Nut	Brass C37700
24	Connector	Brass C89550
25	O-Ring	BUNA SN-719F

* These product complies with 0.25% weighted average lead content on wetted surfaces in accordance with Safe Water Drinking Act (SDWA) / Federal Public Law No. 111-380.



Global sourcing. National compliance. Local service.

CALIFORNIA 5593 Fresca Dr., La Palma CA 90623 • Toll Free: 866-532-8306 • Fax: 866-532-8307
TEXAS 1150 Silber Rd., Houston TX 77055 • Toll Free: 800-935-5456 • Fax: 713-680-2999
NEW YORK PO Box 27, Rt. 22, Brewster NY 10509 • Toll Free: 800-431-2082 • Fax: 845-278-9056
 WEB: www.matco-norca.com EMAIL: mail@matco-norca.com