

# CL-308C Wallmount Kitchen Faucet • Spec Sheet



\*Product will have LF imprinted on the body for Lead Free

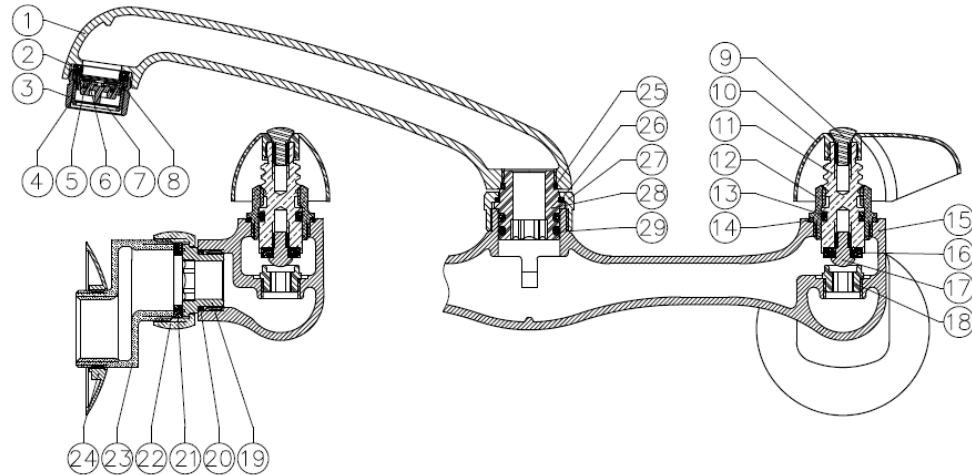
## FEATURES & BENEFITS

- 8" Two Handle
- Metal Lever Handles
- 6" Cast Spout Adjustable From 7"-9"
- Less Soap Dish
- Chrome
- UPC & ADA Approved

## MATERIAL SPECIFICATIONS

No.	Part	Material
1	Outlet	Brass C37700
2	Gasket	EPDM
3	Cap	Brass C37700
4	Steel Bridge	POM
5	Cover	POM
6	Gasket	POM
7	Wire Mesh	Stainless Steel 304
8	Plastic Sheet	POM
9	Screw	Stainless Steel 304
10	Handwheel	Zinc
11	Stem	Brass C89550
12	Cap Nut	Brass C37700
13	O-Ring	EPDM
14	Gasket	NYLON
15	Body	Brass C89550
16	Gasket	EPDM
17	Crossed Screw	Brass C89550
18	Check Core	Brass C89550
19	Connector	Brass C89550
20	O-Ring	BUNA SN-719F
21	Gasket	EPDM
22	Nut	Brass C37700
23	Connector	Brass C89550
24	Flange Cover	Brass C89550
25	O-Ring	BUNA SN-719F
26	Gasket	NYLON
27	Nut	Brass C37700
28	Connector	Brass C89550
29	O-Ring	BUNA SN-719F

\* These product complies with 0.25% weighted average lead content on wetted surfaces in accordance with Safe Water Drinking Act (SDWA) / Federal Public Law No. 111-380.



Global sourcing. National compliance. Local service.

**CALIFORNIA** 5593 Fresca Dr., La Palma CA 90623 • Toll Free: 866-532-8306 • Fax: 866-532-8307  
**TEXAS** 1150 Silber Rd., Houston TX 77055 • Toll Free: 800-935-5456 • Fax: 713-680-2999  
**NEW YORK** PO Box 27, Rt. 22, Brewster NY 10509 • Toll Free: 800-431-2082 • Fax: 845-278-9056  
 WEB: [www.matco-norca.com](http://www.matco-norca.com) EMAIL: [mail@matco-norca.com](mailto:mail@matco-norca.com)