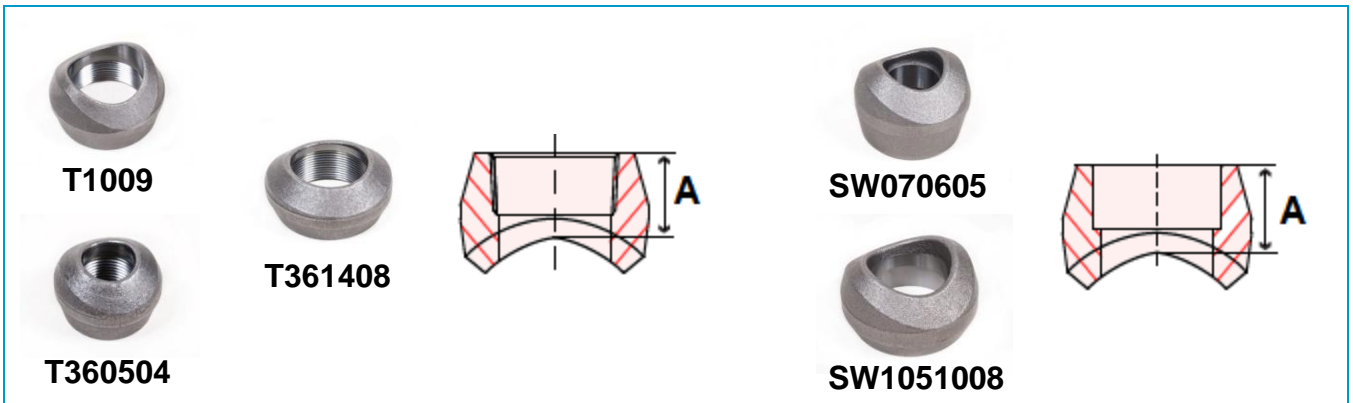


Forged Steel Branch Outlets • Spec Sheet



PART#	SIZE	A IN.	CARTON QTY.	WEIGHT
3000# THREADED				
T360201	36-3/8 RUN X 1/4	0.75	60	0.27
T360302	36-1/2 RUN X 3/8	0.81	60	0.29
T360403	36-3/4 RUN X 1/2	1.00	150	0.29
T360504	36-1 RUN X 3/4	1.06	100	0.51
T070605	1-1/2-1-1/4 RUN X 1	1.31	50	0.88
T360805	36-2 RUN X 1	1.31	50	0.88
T0706	1-1/2 RUN X 1-1/4	1.31	35	0.93
T100806	3-2 RUN X 1-1/4	1.31	35	0.93
T3610506	36-3-1/2 RUN X 1-1/4	1.31	35	0.93
T0807	2 RUN X 1-1/2	1.38	25	1.50
T110907	4-2-1/2 RUN X 1-1/2	1.38	25	1.50
T361207	36-5 RUN X 1-1/2	1.38	25	1.50
T0908	2-1/2 RUN X 2	1.50	15	2.47
T1051008	3-1/2-3 RUN X 2	1.50	15	2.47
T131108	6-4 RUN X 2	1.50	15	2.47
T361408	36-8 RUN X 2	1.50	15	2.47
T1009	3 RUN X 2-1/2	1.81	10	3.00
T1110509	4-3-1/2 RUN X 2-1/2	1.81	10	3.00
T141209	8-5 RUN X 2-1/2	1.81	10	3.00
T361509	36-10 RUN X 2-1/2	1.81	10	3.00
T10510	3-1/2 RUN X 3	2.00	6	4.30
T1110	4 RUN X 3	2.00	6	4.30
T1210	5 RUN X 3	2.00	6	4.30
T1310	6 RUN X 3	2.00	6	4.30
T161410	12-8 RUN X 3	2.00	3	4.30
T361710	36-14 RUN X 3	2.00	3	4.30
T1211	5 RUN X 4	2.25	3	7.12
T1311	6 RUN X 4	2.25	3	7.12
T1411	8 RUN X 4	2.25	3	7.12
T1511	10 RUN X 4	2.25	3	7.12
T181611	16-12 RUN X 4	2.25	3	7.12
T361911	36-18 RUN X 4	2.25	3	7.12

PART#	SIZE	A IN.	CARTON QTY.	WEIGHT
3000# SOCKET WELD				
SW360403	36-3/4 RUN X 1/2	1.00	150	0.29
SW360504	36-1 RUN X 3/4	1.06	100	0.51
SW070605	1-1/2-1-1/4 RUN X 1	1.31	50	0.88
SW360805	36-2 RUN X 1	1.31	50	0.88
SW0706	1-1/2 RUN X 1-1/4	1.31	35	0.93
SW100806	3-2 RUN X 1-1/4	1.31	35	0.93
SW3610506	36-3-1/2 RUN X 1-1/4	1.31	35	0.93
SW0807	2 RUN X 1-1/2	1.38	25	1.50
SW110907	4-2-1/2 RUN X 1-1/2	1.38	25	1.50
SW361207	36-5 RUN X 1-1/2	1.38	25	1.50
SW0908	2-1/2 RUN X 2	1.50	15	2.47
SW1051008	3-1/2-3 RUN X 2	1.50	15	2.47
SW131108	6-4 RUN X 2	1.50	15	2.47
SW361408	36-8 RUN X 2	1.50	15	2.47
SW1009	3 RUN X 2-1/2	1.81	10	3.00
SW1110509	4-3-1/2 RUN X 2-1/2	1.81	10	3.00
SW141209	8-5 RUN X 2-1/2	1.81	10	3.00
SW361509	36-10 RUN X 2-1/2	1.81	10	3.00
SW10510	3-1/2 RUN X 3	2.00	6	4.30
SW1110	4 RUN X 3	2.00	6	4.30
SW1210	5 RUN X 3	2.00	6	4.30
SW1310	6 RUN X 3	2.00	6	4.30
SW161410	12-8 RUN X 3	2.00	3	4.30
SW361710	36-14 RUN X 3	2.00	3	4.30
SW1211	5 RUN X 4	2.25	3	7.12
SW1311	6 RUN X 4	2.25	3	7.12
SW1411	8 RUN X 4	2.25	3	7.12
SW1511	10 RUN X 4	2.25	3	7.12
SW181611	16-12 RUN X 4	2.25	3	7.12
SW361911	36-18 RUN X 4	2.25	3	7.12

Forged Steel Branch Outlets • Spec Sheet



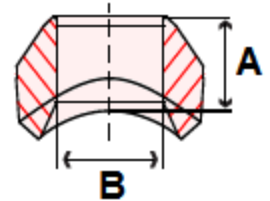
BW1110509



BW360805



BW10510



PART#	SIZE	A IN.	B IN.	CARTON QTY.	WEIGHT
BUTT WELD					
BW360403	36-3/4 RUN X 1/2	0.75	0.545	150	0.29
BW360504	36-1 RUN X 3/4	0.88	0.743	100	0.51
BW070605	1-1/2-1-1/4 RUN X 1	1.06	0.957	50	0.88
BW360805	36-2 RUN X 1	1.06	0.957	50	0.88
BW0706	1-1/2 RUN X 1-1/4	1.25	1.280	35	0.93
BW100806	3-2 RUN X 1-1/4	1.25	1.280	35	0.93
BW3610506	36-3-1/2 RUN X 1-1/4	1.25	1.280	35	0.93
BW0807	2 RUN X 1-1/2	1.31	1.502	25	1.50
BW110907	4-2-1/2 X 1-1/2	1.31	1.502	25	1.50
BW361207	36-5 RUN X 1-1/2	1.31	1.502	25	1.50
BW0908	2-1/2 RUN X 2	1.50	1.938	15	2.47
BW1051008	3-1/2-3 RUN X 2	1.50	1.938	15	2.47
BW131108	6-4 RUN X 2	1.50	1.938	15	2.47
BW361408	36-8 RUN X 2	1.50	1.938	15	2.47
BW1009	3 RUN X 2-1/2	1.62	2.322	10	3.00
BW1110509	4-3-1/2 RUN X 2-1/2	1.62	2.322	10	3.00

PART#	SIZE	A IN.	B IN.	CARTON QTY.	WEIGHT
BUTT WELD					
BW141209	8-5 RUN X 2-1/2	1.62	2.322	10	3.00
BW361509	36-10 RUN X 2-1/2	1.62	2.322	10	3.00
BW10510	3-1/2 RUN X 3	1.75	2.900	6	4.30
BW1110	4 RUN X 3	1.75	2.900	6	4.30
BW1210	5 RUN X 3	1.75	2.900	6	4.30
BW1310	6 RUN X 3	1.75	2.900	6	4.30
BW161410	12-8 RUN X 3	1.75	2.900	3	4.30
BW361710	36-14 RUN X 3	1.75	2.900	3	4.30
BW1211	5 RUN X 4	2.00	3.826	3	7.12
BW1311	6 RUN X 4	2.00	3.826	3	7.12
BW1411	8 RUN X 4	2.00	3.826	3	7.12
BW1511	10 RUN X 4	2.00	3.826	3	7.12
BW181611	16-12 RUN X 4	2.00	3.826	3	7.12
BW361911	36-18 RUN X 4	2.00	3.826	3	7.12
BW1513	10 RUN X 6	3.06	5.761	3	7.12
BW1614	12 RUN X 8	3.88	7.625	3	7.12

Note: All Butt Weld Outlets Have a Schedule 80 Bore

BRANCH OUTLET RUN SIZE COMBINATIONS

3000# THREADED & SOCKET WELD - S/80 BUTT-WELD

		OUTLET SIZE										
		1/4"	3/8"	1/2"	3/4"	1"	1-1/4"	1-1/2"	2"	2-1/2"	3"	4"
Run Size	Straight Way	3/8" - 36"	1/2" - 36"	3/4" - 36"	1" - 36"	1-1/4" - 1-1/2"	1-1/2"	2"	2-1/2"	3"	3-1/2"	5"
						2" - 36"	2" - 3"	2-1/2" - 4"	3 - 3-1/2"	3-1/2" - 4"	4"	6"
							3-1/2" - 36"	5" - 36"	4" - 6"	5" - 8"	5"	8"
									8" - 36"	10" - 36"	6"	10"
											8" - 12"	12" - 16"
											14" - 36"	18" - 36"

Butt-Weld Outlets also available in 10" x 6" and 12" x 8".
Each charted outlet size are designed to fit a number of run pipe sizes.

Matco-Norca Commercial / Industrial Sales Team 6100 Preston Road, Suite 250, Frisco, TX 75034

TEL: 877-362-5122 • FAX: 469-362-8100 • www.matco-norca.com