

BARVYN Steam Radiator Angle Valve • Spec Sheet

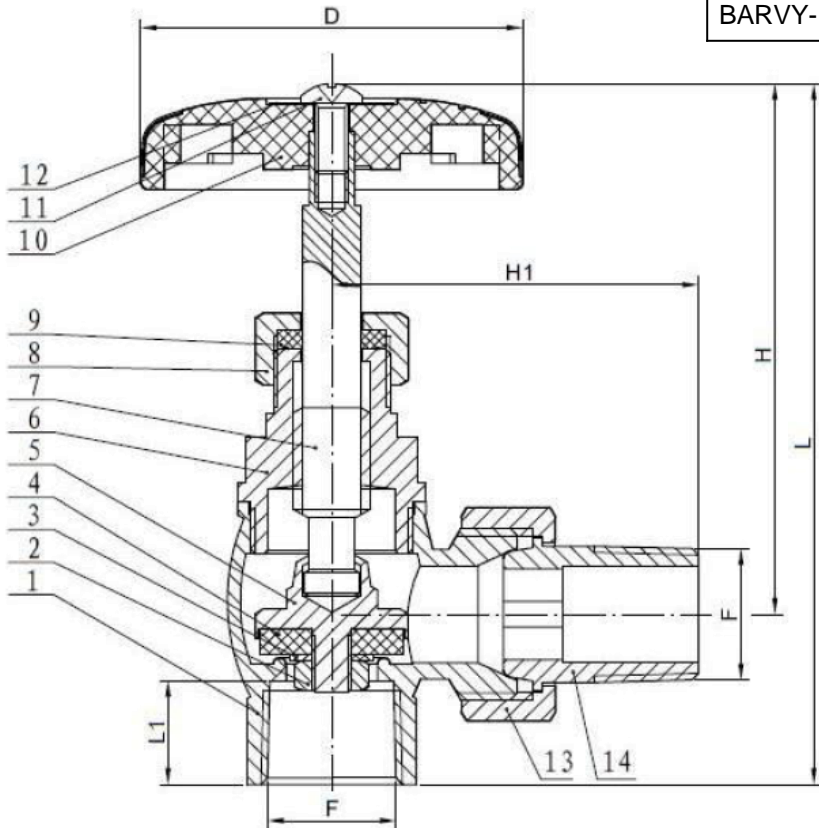


FEATURES & BENEFITS

- ISO 9002
- Steam Radiator Angle Valve
- Brass
- 15 WSP - 60 WOG
- FIP x Male Union
- Sizes 1" - 1-1/4"

DIMENSIONS

Part #	Size (F)	D	H	H1	L	L1
BARVY-1001N	1"	2.32	3.15	2.64	4.35	0.65
BARVY-1251N	1-1/4"	2.32	3.15	3.31	4.45	0.71



MATERIAL SPECIFICATIONS

No.	Part	Material
1	Body	Brass
2	Nut	Steel
3	Gasket	Steel
4	Gasket	EPDM
5	Seal Seat	Brass
6	Bonnet	Brass
7	Stem	Brass
8	Packing Nut	Brass
9	Filler	PTFE
10	Handle	Plastic
11	Screw	Steel
12	Dick	AL
13	Compression	Brass
14	Connector	Brass



Global sourcing. National compliance. Local service.

CALIFORNIA 5593 Fresca Dr., La Palma CA 90623

TEXAS 1150 Silber Rd., Houston TX 77055

ILLINOIS 278 Windy Point Dr., Glendale Heights, IL 60139

NEW YORK PO Box 27, Rt.22, Brewster NY 10509

WEB: www.matco-norca.com

• Phone: 866-532-8306 • Fax: 866-532-8307

• Phone: 800-935-5456 • Fax: 713-680-2999

• Phone: 844-412-5068 • Fax: 800-640-2252

• Phone: 800-431-2082 • Fax: 845-278-9056

EMAIL: mail@matco-norca.com