

422CSF Cast Steel Flanged Swing Check • Spec Sheet

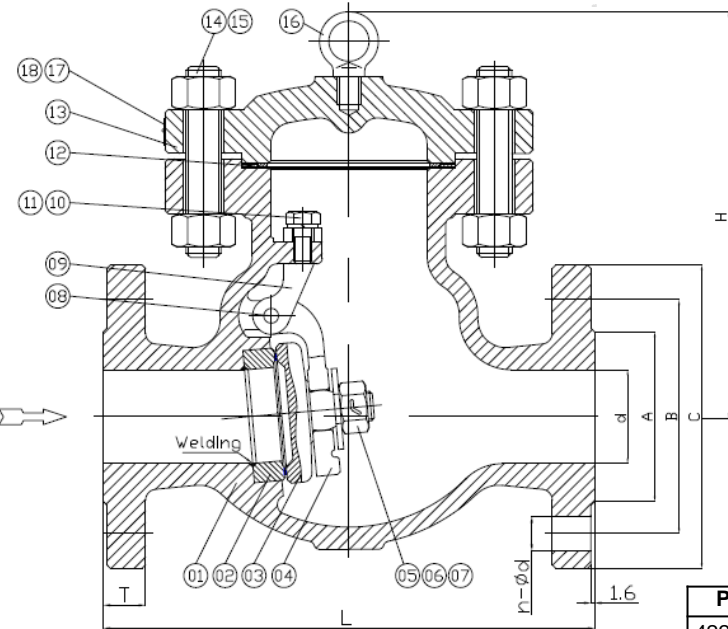


FEATURES & BENEFITS

- Cast Steel Flanged Swing Check
- 150lb. Flanged Connection
- Bolted Cover
- ASTM A216 WCB
- NACE MR0175
- Maximum Pressure 285 PSI
- Maximum Temperature 1000°F
- Max Steam Pressure Rating 193 PSIG @ 385°F
- Sizes 2" – 12"

MATERIAL SPECIFICATIONS

No.	Part	Material
1	Body	ASTM A216 WCB
2	Seat	ASTM A105+13Cr
3	Disc	ASTM A216 WCB+13Cr
4	Hinge	ASTM A216 WCB
5	Nut	ASTM A194 8
6	Gasket	ASTM A276 410
7	Split Pin	SS
8	Pin	ASTM A276 410
9	Fixed Hinge	ASTM A216 WCB
10	Stud	ASTM A193 B8
11	Washer	SS
12	Gasket	304+Flexible Graphite
13	Cover	ASTM A216 WCB
14	Stud	ASTM A193 B7
15	Nut	ASTM A194 2H
16	Eyebolt	ASTM A29 1025
17	Rivet	SS
18	Name Plate	SS



DIMENSIONS

Part #	Size	d	A	B	C	T	L	H	n-Ø
422CSF08	2"	2.01	3.62	4.75	5.99	0.63	8.00	5.32	4 - 3/4
422CSF09	2-1/2"	2.52	4.14	5.50	7.01	0.69	8.51	6.11	4 - 3/4
422CSF10	3"	2.99	5.00	6.01	7.49	0.75	9.50	6.62	4 - 3/4
422CSF11	4"	4.02	6.19	7.51	9.02	0.95	11.50	9.26	8 - 3/4
422CSF13	6"	5.99	8.51	9.52	10.99	1.02	14.03	10.91	8 - 7/8
422CSF14	8"	8.00	10.64	11.76	13.51	1.14	19.50	13.36	8 - 7/8
422CSF15	10"	10.01	12.77	14.26	16.00	1.22	24.51	15.68	12 - 1
422CSF16	12"	12.02	15.01	17.02	19.03	1.26	27.50	20.69	12 - 1



CALIFORNIA 5595 Fresca Dr., La Palma CA 90623
TEXAS 1150 Silber Rd., Houston TX 77055
ILLINOIS 278 Windy Point Dr., Glendale Heights, IL 60139
GEORGIA 113 Industrial Blvd., Americus, Georgia 31709
NEW YORK PO Box 27, Rt.22, Brewster NY 10509
 WEB: www.matco-norca.com

• Phone: 866-532-8306 • Fax: 866-532-8307
 • Phone: 800-935-5456 • Fax: 713-680-2999
 • Phone: 844-412-5068 • Fax: 800-640-2252
 • Phone: 800-433-7526 • Fax: 800-533-5134
 • Phone: 800-431-2082 • Fax: 845-278-9056

EMAIL: mail@matco-norca.com