

# 40SSTH S.S. Threaded Gate Valve • Spec Sheet

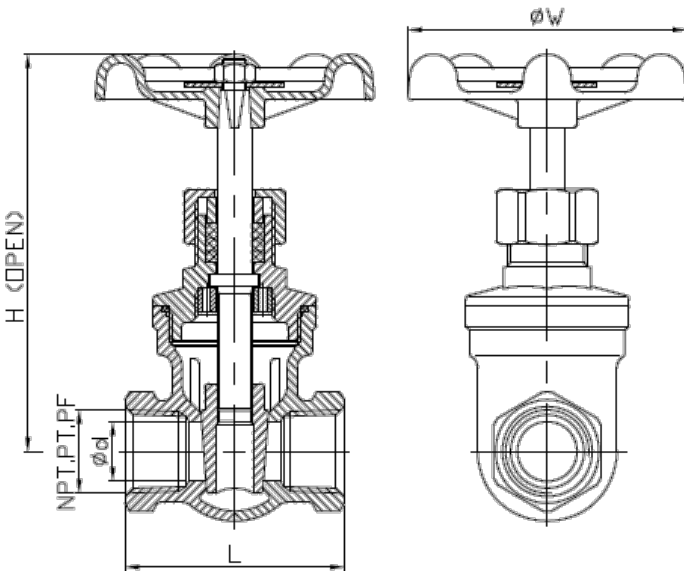


## FEATURES & BENEFITS

- W.P. 200WOG
- W.T. -4°F - 392°F
- 316 Stainless Steel Body
- Investment Casting
- Non-rising Stem
- Thread Type: NPT
- Sizes 1/2" - 2"

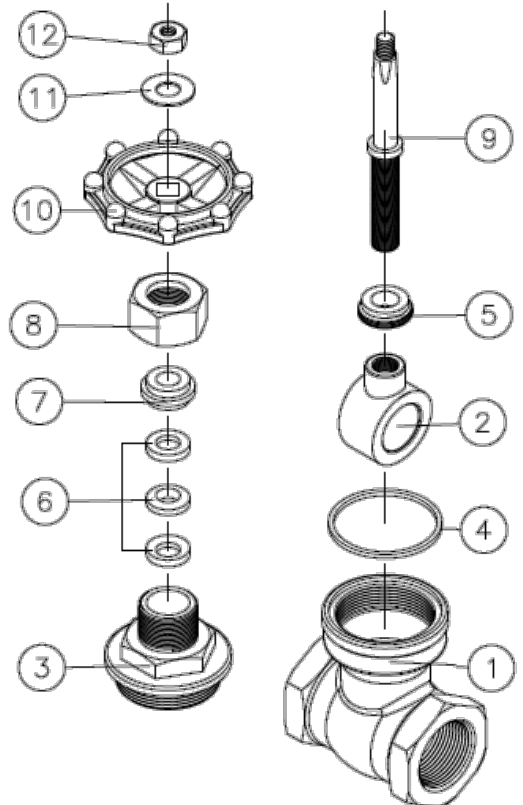
## MATERIAL SPECIFICATIONS

No.	Part	Material
1	Body	Stainless Steel 316
2	Disc	Stainless Steel 316
3	Bonnet	Stainless Steel 316
4	Gasket	PTFE
5	Whorl Gasket	Stainless Steel 304
6	Packing	PTFE
7	Gland	Stainless Steel 304
8	Cap Nut	Stainless Steel 316
9	Stem	Stainless Steel 316
10	Handle	Aluminum
11	Name Plate	Aluminum
12	Nut	Stainless Steel 304



## DIMENSIONS

Part #	Size	d	L	H	W	Weight (lb)
40SSTH03	1/2"	0.59	2.17	3.98	2.76	0.93
40SSTH04	3/4"	0.79	2.36	4.26	2.76	1.17
40SSTH05	1"	0.99	2.56	4.53	3.15	1.54
40SSTH06	1-1/4"	1.26	2.96	5.20	3.15	2.23
40SSTH07	1-1/2"	1.50	3.35	5.87	3.55	3.40
40SSTH08	2"	1.97	3.74	6.90	3.94	4.54



**CALIFORNIA** 5595 Fresca Dr., La Palma CA 90623  
**TEXAS** 1150 Silber Rd., Houston TX 77055  
**ILLINOIS** 278 Windy Point Dr., Glendale Heights, IL 60139  
**GEORGIA** 113 Industrial Blvd., Americus, Georgia 31709  
**NEW YORK** PO Box 27, Rt.22, Brewster NY 10509  
 WEB: [www.matco-norca.com](http://www.matco-norca.com)

• Phone: 866-532-8306 • Fax: 866-532-8307  
 • Phone: 800-935-5456 • Fax: 713-680-2999  
 • Phone: 844-412-5068 • Fax: 800-640-2252  
 • Phone: 800-433-7526 • Fax: 800-533-5134  
 • Phone: 800-431-2082 • Fax: 845-278-9056  
 EMAIL: [mail@matco-norca.com](mailto:mail@matco-norca.com)