

26-2021PLF Angle Supply Valve

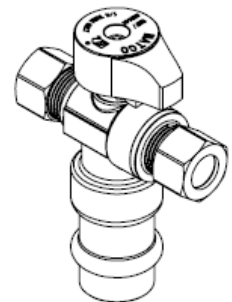
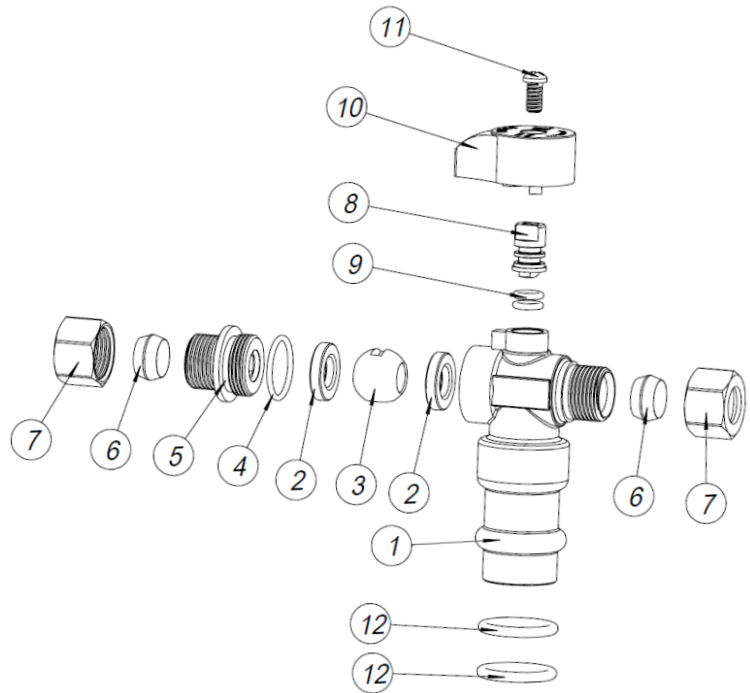
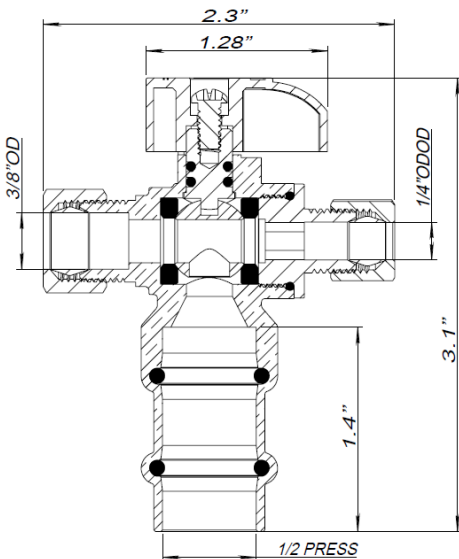
Specification Sheet

FEATURES & BENEFITS

- Chrome Plated Lead Free Brass
- 1/4 Turn
- Dual Outlet
- One Piece Body
- cUPC, NSF/ANSI 61 Certified
- 1/2" Press x 3/8" OD Compression x 1/4" OD Compression

MATERIAL SPECIFICATIONS

No.	Part	Material	Qty
1	Body	Brass LF	1
2	Packing	PTFE	2
3	Ball	Brass LF	1
4	O-Ring	NBR	1
5	Outlet Nut	Brass LF	1
6	Sleeve	Brass LF	1
7	Packing Nut	Brass	1
8	Stem	Brass	1
9	O-Ring	NBR	2
10	Handle	Zinc Alloy	1
11	Bolt	FE	1
12	O-Ring	EPDM	2
13	Sleeve	Brass LF	1
14	Packing Nut	Brass	1



MATCO
NORCA