

225MR DI Mechanical Joint Valve • Spec Sheet

FEATURES & BENEFITS

- Mechanical Joint Ductile Iron Gate Valve
- Open Right
- Resilient Wedge
- Non Rising Stem
- UL Listed / FM Approved
- AWWA C515-15
- 300 PSI 3" - 12"
- AWWA C550 Epoxy
- NSF-61 / NSF-372 verified by UL Water Quality
- Can Be Fitted With Post Indicator Plate

MATERIAL SPECIFICATIONS

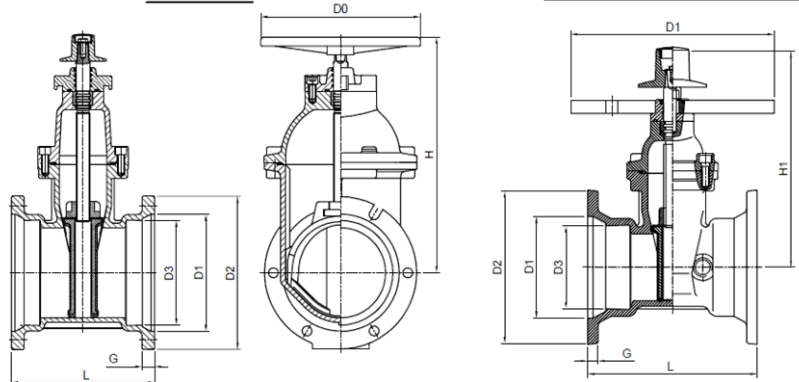
No.	Part	Material	ASTM Spec.
1	Body	Ductile Iron	A536-65-45-12
2	Wedge	Ductile Iron EPDM Encapsulated	A536-65-45-12
3	Stem Nut	Bronze	ASTM C95200
4	Stem	Stainless Steel	ANSI 304
5	Gasket	Rubber	EPDM
6	Bolt	Stainless Steel	SS304
7	Bonnet	Ductile Iron	A536-65-45-12
8	O-Ring	Rubber	NBR
9	Thrust Collar	Bronze	ASTM C95200
10	O-Ring	Rubber	NBR
11	Gland	Ductile Iron	A536-65-45-12
12	O-Rings	Rubber	NBR
13	Dust Ring	Rubber	NBR
14	Operating Nut (Optional)	Ductile Iron	A536-65-45-12
15	Bolts	Stainless Steel	SS304
16	Washer	Stainless Steel	SS304
17	Handwheel (Optional)	Ductile Iron	A536-65-45-12
18	Bolts	Stainless Steel	SS304

DIMENSIONS

Part #	Size	L	D2	D1	D3	G	H	D0	D1	H1	Bolt Circle	Qty.*Dia Bolt Hole
225M10R	3"	9.50	7.6	4.9	4.1	0.59	11.0	10	-	11.6	6.25	4*0.75
225M11R	4"	10.00	9.1	6.0	4.9	0.60	11.8	10	12	13.8	7.50	4*0.88
225M13R	6"	11.50	11.1	8.1	7.1	0.63	16.4	12	12	18.0	9.50	6*0.88
225M14R	8"	12.50	13.3	10.3	9.2	0.66	20.7	14	12	21.5	11.75	6*0.88
225M15R	10"	14.75	15.6	12.3	11.2	0.70	24.5	16	12	25.5	14.00	8*0.88
225M16R	12"	15.00	17.9	14.4	13.3	0.73	28.0	16	12	28.8	16.25	8*0.88

No Plate

With Plate: SIZE 4"-12"



MATCO-NORCA

Global sourcing. National compliance. Local service.

CALIFORNIA 5595 Fresca Dr., La Palma CA 90623
TEXAS 1150 Silber Rd., Houston TX 77055
ILLINOIS 278 Windy Point Dr., Glendale Heights, IL 60139
GEORGIA 113 Industrial Blvd., Americus, Georgia 31709
NEW YORK PO Box 27, Rt.22, Brewster NY 10509
 WEB: www.matco-norca.com

• Phone: 866-532-8306 • Fax: 866-532-8307
 • Phone: 800-935-5456 • Fax: 713-680-2999
 • Phone: 844-412-5068 • Fax: 800-640-2252
 • Phone: 800-433-7526 • Fax: 800-533-5134
 • Phone: 800-431-2082 • Fax: 845-278-9056
 EMAIL: mail@matco-norca.com