

130W Eccentric Plug Valve - Flanged

Specification Sheet

FEATURES & BENEFITS

- Ductile Iron Flanged Eccentric Plug Valve
- 250 PSI
- AWWA C517
- Fusion Bonded Epoxy - AWWA C550
- Flanged Ends Conform with ASME B16.1
- EPDM Plug
- Horizontal or Vertical Installation
- Sizes 3" - 12"

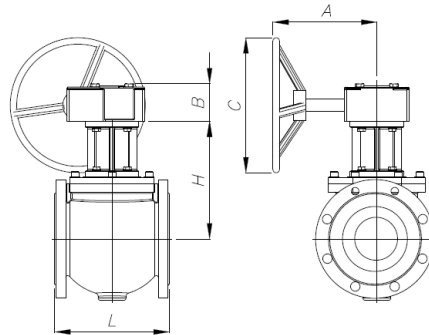
Plug Valves are ideal for handling:

- Clean Liquids
- Dirty Liquids
- Sludge
- Slurries



DIMENSIONS

Part # Handwheel	Part # OP Nut	Size	L	H	A	B	C
130W10	130W10N	3"	8.0	7.2	6.2	3.1	7.5
130W11	130W11N	4"	9.0	7.9	6.2	3.1	7.5
130W13	130W13N	6"	10.5	10.8	8.9	3.4	11.9
130W14	130WG14N	8"	11.5	13.1	10.6	4.9	15.4
130W15	130WG15N	10"	13.0	17.4	12.1	4.7	17.5
130W16	130WG16N	12"	14.0	18.5	12.1	4.7	17.5



MATERIAL SPECIFICATIONS

No.	Part	Material
1	Body	Ductile Iron A536 Grade 65-45-12
2	Shaft Bushing	Stainless Steel A276 Type 316
3	Thrust Washer	PTFE
4	Plug	EPDM Encapsulated Ductile Iron
5	Key	Carbon Steel A29 1045
6	Thrust Washer	PTFE
7	Shaft Bushing	Stainless Steel A276 Type 316
8	O-Ring	Rubber NBR D2000
9	Bonnet	Ductile Iron A536 Grade 65-45-12
10	Washer	Stainless Steel A276 Type 316
11	Bolt	Stainless Steel A276 Type 316
12	O-Ring	Rubber NBR D2000
13	V-Packing	Rubber NBR D2000
14	Washer	Brass B124 C37700
15	Packing Gland	Carbon Steel A29 1045
16	Washer	Stainless Steel A276 Type 316
17	Bolt	Stainless Steel A276 Type 316
18	Yoke	Ductile Iron A536 Grade 65-45-12
19	O-Ring	Rubber NBR D2000
20	Gear Box	Gray Cast Iron A126 Grade B

