

# 130M Eccentric Plug Valve Mechanical Joint

## Specification Sheet

### FEATURES & BENEFITS

- Ductile Iron Eccentric Plug Valve
- Mechanical Joint
- 250 PSI
- AWWA C517
- Fusion Bonded Epoxy - AWWA C550
- Mechanical joint Complies with AWWA/ANSI C153
- EPDM Plug
- Comes with 2" Op Nut
- Sizes 3" - 12"

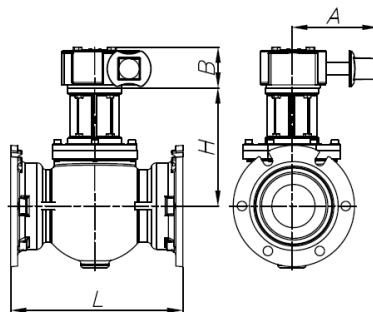
### Plug Valves are ideal for handling:

- Clean Liquids
- Dirty Liquids
- Sludge
- Slurries



### DIMENSIONS

Part #	Size	L	H	A	B
130M10	3"	11.5	7.2	6.1	3.1
130M11	4"	14.3	7.9	6.1	3.1
130M13	6"	15.7	10.8	8.8	3.4
130MG14	8"	17.4	13.1	10.4	4.9
130MG15	10"	19.4	17.4	11.7	4.7
130MG16	12"	20.7	18.5	11.7	4.7



### MATERIAL SPECIFICATIONS

No.	Part	Material
1	Body	Ductile Iron A536 Grade 65-45-12
2	Shaft Bushing	Stainless Steel A276 Type 316
3	Thrust Washer	PTFE
4	Plug	EPDM Encapsulated Ductile Iron
5	Key	Carbon Steel A29 1045
6	Thrust Washer	PTFE
7	Shaft Bushing	Stainless Steel A276 Type 316
8	Gasket	Rubber NBR D2000
9	Bonnet	Ductile Iron A536 Grade 65-45-12
10	Washer	Stainless Steel A276 Type 316
11	Bolt	Stainless Steel A276 Type 316
12	O-Ring	Rubber NBR D2000
13	V-Packing	Rubber NBR D2000
14	Washer	Brass B124 C37700
15	Packing Gland	Carbon Steel A29 1045
16	Washer	Stainless Steel A276 Type 316
17	Bolt	Stainless Steel A276 Type 316
18	Yoke	Ductile Iron A536 Grade 65-45-12
19	O-Ring	Rubber NBR D2000
20	Gear Box	Assembly

