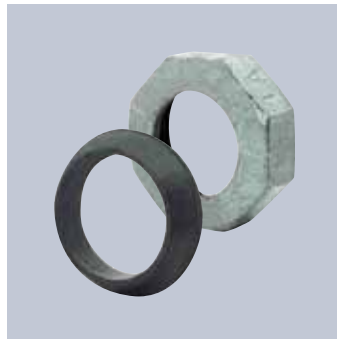
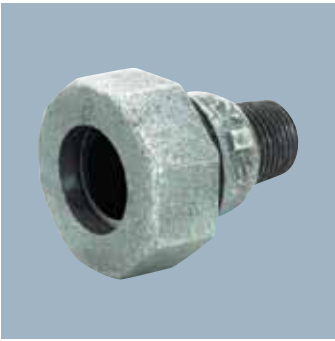
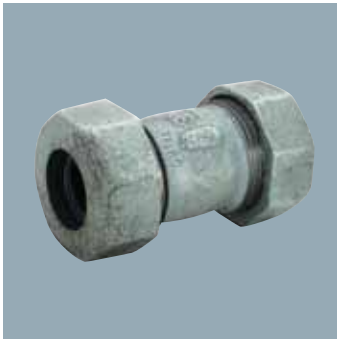


*Clampette*  
Inc.



# Clampette Products

 **MATCO-NORCA**  
Global sourcing. National compliance. Local service.

C A L I F O R N I A   •   T E X A S   •   N E W   Y O R K

# Patch Clamps

Clampette is a United States manufacturer of stainless steel pipe repair clamps. We take great pride in the manufacturing and distribution of high quality clamps and have been doing so since 1957.

Clampette repair clamps are used internationally by municipalities, state and federal entities, plumbing, hardware, industrial and water works distributors, oil field maintenance, irrigation, ship chandlers, apartment maintenance supply and anyone in need of a quality emergency repair.



## THE #330 PATCH CLAMP:

- Available for iron pipe size, copper tube size and actual outside diameter size.
- No loose parts.
- Can be installed with one hand.
- Rounded corners with sheared edges turned down, eliminating the danger of small cuts or nicks during installation.
- A long carriage bolt with an extra large shoulder that prevents the bolt from spinning during installation.
- A double chamfered oversized nut that allows easy hand tightening.
- We have the finest packaging in the industry utilizing die cut boxes that are quadruple thick, eliminating all possibility of damaging clamps both in shipping and in your inventory.



## THE #331 FULL WRAP CLAMP:

- Available for nominal pipe sizes through 30". Larger sizes are available upon request.
- Nylon washers added to eliminate any damage to the clamp during installation.
- PTFE coated 304 stainless steel nut to prevent galling.



## MALLEABLE COMPRESSION FITTINGS:

Clampette's line of high quality imported compression couplings can be found on pages 11 through 12 of this catalog. This includes straight couplings, male adapters, tees and elbows. Of course, Clampette carries all parts for each size in the line.

For brass and PVC compression couplings and tee's previously found in our catalog please see the latest Matco-Norca Inc. catalog.



**MADE IN THE  
U.S.A.**

# Patch Clamps Material Specifications



## 330 Patch Clamp

**AVAILABLE IN 3/8" - 24" DIAMETER**

**AVAILABLE IN 3", 6", 9" AND 12" WIDE.**

**BAND:** Stainless Steel - Type #304.

**LUGS:** Malleable Iron - Electro Galvanized with Dichromate finish.

**BOLTS:** Carbon Steel - Electro Galvanized with Dichromate finish.

**NUTS:** Carbon Steel - Electro Galvanized with Dichromate finish.

**WASHERS:** SAE Flat Washer - Zinc II plated Meets specifications of ASTM-F844.

**GASKET:** Gridded Nitrile Buna Rubber is especially resistant to aromatic hydrocarbons, gasoline, petroleum oils, mineral oils, vegetable oils and natural gas.

**TEMPERATURE RATING:** -20 degrees F to +180 degrees F.

**PRESSURE RATING:**  
150 PSI.

### ADVANTAGES:

**CLAMPS:** Pre-formed at the factory. Drop in bolt eliminates loose parts and allows for easy "one hand" installation.

**STAINLESS STEEL BAND:** Double slit so that edges on both sides of clamp turn under. This eliminates sharp edges which would cut your hand.

**LUGS:** Cadmium plated malleable iron to protect against rust and corrosion.

**BOLTS:** Have an extra long square shank. Other bolts have a slightly rounded shank that allows the bolt to turn.

**NUTS:** Oversized, allowing easy "one-hand" installation.

**PACKAGING:** Packed in a quadruple thick, fold-up box that prevents damage.

**SHIPPING:** Clamps are shipped completely assembled.

**MADE IN USA:** For faster service, higher quality and the ability to react to special customer needs.

### CROSS-REFERENCE CHART

<b>Clampette</b>	Smith-Blair	JCM	Ford	Romac	Power
Seal #330 Patch Clamp	#245	#110	FSC	SC	#3151

# Iron Pipe Size Patch Clamps



330	MATCO-NORCA MODEL NUMBER	PIPE SIZE	CARTON QUANTITIES		WEIGHT PER 100 PIECES
			INNER	MASTER	
<b>IPS Patch Clamp</b>					<b>3" Wide - 1 Bolt</b>
	330-023	3/8"	6	24	54
	330-033	1/2"	6	24	56
	330-043	3/4"	6	24	57
	330-053	1"	6	24	60
	330-063	1-1/4"	6	24	61
	330-073	1-1/2"	6	24	63
	330-083	2"	4	16	105
	330-093	2-1/2"	4	16	108
	330-103	3"	4	16	111
	330-1053	3-1/2"	2	8	133
	330-113	4"	2	8	139
	330-123	5"	2	-	141
	330-133	6"	2	-	142
	330-1353	7"	2	-	144
	330-143	8"	2	-	148
	<b>Below Clamps Are 2-Band Clamps</b>				
	330-153	10"	2	-	256
	330-163	12"	2	-	268
	330-173	14"	2	-	-
	330-183	16"	2	-	-
	330-193	18"	2	-	-
	330-203	20"	2	-	-
	330-243	24"	2	-	-



330	MATCO-NORCA MODEL NUMBER	PIPE SIZE	CARTON QUANTITIES		WEIGHT PER 100 PIECES
			INNER	MASTER	
<b>IPS Patch Clamp</b>					<b>6" Wide - 2 Bolt</b>
	330-026	3/8"	3	12	107
	330-036	1/2"	3	12	112
	330-046	3/4"	3	12	115
	330-056	1"	3	12	118
	330-066	1-1/4"	3	12	120
	330-076	1-1/2"	3	12	130
	330-086	2"	2	8	207
	330-096	2-1/2"	2	8	214
	330-106	3"	2	8	242
	330-1056	3-1/2"	1	4	270
	330-116	4"	1	4	274
	330-126	5"	1	-	280
	330-136	6"	1	-	285
	330-1356	7"	1	-	292
	330-146	8"	1	-	298
	<b>Below Clamps Are 2-Band Clamps</b>				
	330-156	10"	1	-	507
	330-166	12"	1	-	563
	330-176	14"	1	-	-
	330-186	16"	1	-	-
	330-196	18"	1	-	-
	330-206	20"	1	-	-
	330-246	24"	1	-	-

# Iron Pipe Size Patch Clamps





330	MATCO-NORCA MODEL NUMBER	PIPE SIZE	CARTON QUANTITIES		WEIGHT PER 100 PIECES
			INNER	MASTER	
	<b>IPS Patch Clamp</b>				<b>9" Wide – 3 Bolt</b>
	330-029	3/8"	4	-	165
	330-039	1/2"	4	-	167
	330-049	3/4"	4	-	173
	330-059	1"	4	-	174
	330-069	1-1/4"	4	-	190
	330-079	1-1/2"	3	-	206
	330-089	2"	3	-	333
	330-099	2-1/2"	1	-	393
	330-109	3"	1	-	396
	330-1059	3-1/2"	1	-	401
	330-119	4"	1	-	417
	330-129	5"	1	-	423
	330-139	6"	1	-	440
	330-1359	7"	1	-	446
	330-149	8"	1	-	481
					<b>Below Clamps Are 2-Band Clamp</b>
	330-159	10"	1	-	790
	330-169	12"	1	-	856
	330-179	14"	1	-	-
	330-189	16"	1	-	-
	330-199	18"	1	-	-
	330-209	20"	1	-	-





330	MATCO-NORCA MODEL NUMBER	PIPE SIZE	CARTON QUANTITIES		WEIGHT PER 100 PIECES
			INNER	MASTER	
	<b>IPS Patch Clamp</b>				<b>12" Wide – 4 Bolt</b>
	330-0212	3/8"	4	-	221
	330-0312	1/2"	4	-	222
	330-0412	3/4"	4	-	227
	330-0512	1"	4	-	236
	330-0612	1-1/4"	4	-	247
	330-0712	1-1/2"	3	-	258
	330-0812	2"	3	-	444
	330-0912	2-1/2"	2	-	524
	330-1012	3"	2	-	528
	330-10512	3-1/2"	1	-	535
	330-1112	4"	1	-	556
	330-1212	5"	1	-	564
	330-1312	6"	1	-	588
	330-13512	7"	1	-	592
	330-1412	8"	1	-	640
					<b>Below Clamps Are 2-Band Clamps</b>
	330-1512	10"	1	-	1058
	330-1612	12"	1	-	1101
	330-1712	14"	1	-	-
	330-1812	16"	1	-	-
	330-1912	18"	1	-	-
	330-2012	20"	1	-	-
	330-2412	24"	1	-	-

# Copper Tube Size Patch Clamps


330	MATCO-NORCA MODEL NUMBER	PIPE SIZE	CARTON QUANTITIES		WEIGHT PER 100 PIECES
			INNER	MASTER	
	<b>CTS Patch Clamp</b>				
	<b>3" Wide - 1 Bolt</b>				
	330-033-CTS	1/2"	6	24	56
	330-043-CTS	3/4"	6	24	57
	330-053-CTS	1"	6	24	60
	330-063-CTS	1-1/4"	6	24	61
	330-073-CTS	1-1/2"	6	24	63
	330-083-CTS	2"	4	16	105
	330-093-CTS	2-1/2"	4	16	108
	330-103-CTS	3"	4	16	111
	330-1053-CTS	3-1/2"	2	8	133
	330-113-CTS	4"	2	8	139
	330-123-CTS	5"	2	-	141
330-133-CTS	6"	2	-	142	


330	MATCO-NORCA MODEL NUMBER	PIPE SIZE	CARTON QUANTITIES		WEIGHT PER 100 PIECES
			INNER	MASTER	
	<b>CTS Patch Clamp</b>				
	<b>6" Wide - 2 Bolt</b>				
	330-036-CTS	1/2"	3	12	112
	330-046-CTS	3/4"	3	12	115
	330-056-CTS	1"	3	12	118
	330-066-CTS	1-1/4"	3	12	120
	330-076-CTS	1-1/2"	3	12	130
	330-086-CTS	2"	2	8	207
	330-096-CTS	2-1/2"	2	8	214
	330-106-CTS	3"	2	8	242
	330-1056-CTS	3-1/2"	1	4	270
	330-116-CTS	4"	1	4	274
	330-126-CTS	5"	1	-	280
330-136-CTS	6"	1	-	285	


330	MATCO-NORCA MODEL NUMBER	PIPE SIZE	CARTON QUANTITIES		WEIGHT PER 100 PIECES
			INNER	MASTER	
	<b>CTS Patch Clamp</b>				
	<b>9" Wide - 3 Bolt</b>				
	330-039-CTS	1/2"	4	-	167
	330-049-CTS	3/4"	4	-	173
	330-059-CTS	1"	4	-	174
	330-069-CTS	1-1/4"	4	-	190
	330-079-CTS	1-1/2"	3	-	206
	330-089-CTS	2"	3	-	333
	330-099-CTS	2-1/2"	1	-	393
	330-109-CTS	3"	1	-	396
	330-1059-CTS	3-1/2"	1	-	401
	330-119-CTS	4"	1	-	417
	330-129-CTS	5"	1	-	423
330-139-CTS	6"	1	-	440	


330	MATCO-NORCA MODEL NUMBER	PIPE SIZE	CARTON QUANTITIES		WEIGHT PER 100 PIECES
			INNER	MASTER	
	<b>CTS Patch Clamp</b>				
	<b>12" Wide - 4 Bolt</b>				
	330-0312-CTS	1/2"	4	-	222
	330-0412-CTS	3/4"	4	-	227
	330-0512-CTS	1"	4	-	236
	330-0612-CTS	1-1/4"	4	-	247
	330-0712-CTS	1-1/2"	3	-	258
	330-0812-CTS	2"	3	-	444
	330-0912-CTS	2-1/2"	2	-	524
	330-1012-CTS	3"	2	-	528
	330-10512-CTS	3-1/2"	1	-	536
	330-1112-CTS	4"	1	-	556
	330-1212-CTS	5"	1	-	564
330-1312-CTS	6"	1	-	588	

# Outside Diameter Patch Clamps

330	OD Patch Clamp	PIPE SIZE	CARTON QUANTITIES		WEIGHT PER 100 PIECES
			INNER	MASTER	
					<b>3" Wide – 1 Bolt</b>
	330-083-OD	2"	4	16	105
	330-093-OD	2-1/2"	4	16	108
	330-103-OD	3"	4	16	111
	330-1053-OD	3-1/2"	2	8	133
	330-113-OD	4"	2	8	139
	330-123-OD	5"	2	-	141
	330-133-OD	6"	2	-	142
	330-1353-OD	7"	2	-	144
	330-143-OD	8"	2	-	148
330-153-OD	10"	2	-	256	
330-163-OD	12"	2	-	268	

330	OD Patch Clamp	PIPE SIZE	CARTON QUANTITIES		WEIGHT PER 100 PIECES
			INNER	MASTER	
					<b>6" Wide – 2 Bolt</b>
	330-086-OD	2"	2	8	207
	330-096-OD	2-1/2"	2	8	214
	330-106-OD	3"	2	8	242
	330-1056-OD	3-1/2"	1	4	270
	330-116-OD	4"	1	4	274
	330-126-OD	5"	1	-	280
	330-136-OD	6"	1	-	285
	330-1356-OD	7"	1	-	292
	330-146-OD	8"	1	-	298
330-156-OD	10"	1	-	507	
330-166-OD	12"	1	-	563	

330	OD Patch Clamp	PIPE SIZE	CARTON QUANTITIES		WEIGHT PER 100 PIECES
			INNER	MASTER	
					<b>9" Wide – 3 Bolt</b>
	330-089-OD	2"	3	-	333
	330-099-OD	2-1/2"	1	-	393
	330-109-OD	3"	1	-	396
	330-1059-OD	3-1/2"	1	-	401
	330-119-OD	4"	1	-	417
	330-129-OD	5"	1	-	423
	330-139-OD	6"	1	-	440
	330-1359-OD	7"	1	-	446
	330-149-OD	8"	1	-	481
330-159-OD	10"	1	-	790	
330-169-OD	12"	1	-	856	

330	OD Patch Clamp	PIPE SIZE	CARTON QUANTITIES		WEIGHT PER 100 PIECES
			INNER	MASTER	
					<b>12" Wide – 4 Bolt</b>
	330-0812-OD	2"	3	-	444
	330-0912-OD	2-1/2"	2	-	524
	330-1012-OD	3"	2	-	528
	330-10512-OD	3-1/2"	1	-	535
	330-1112-OD	4"	1	-	556
	330-1212-OD	5"	1	-	564
	330-1312-OD	6"	1	-	588
	330-13512-OD	7"	1	-	592
	330-1412-OD	8"	1	-	640
330-1512-OD	10"	1	-	1058	
330-1612-OD	12"	1	-	1101	

# Full Wrap Clamps

## 331 Full Wrap Clamp

### BAND:

Type 304 stainless steel.

### LOCKING WASHER PLATE:

Type 304, 10 gauge stainless steel.  
Locks into position for easy tightening of nuts.

### BOLT RECEIVERS:

Type 304, 8 gauge stainless steel. MIG welded to receiver bar and fully passivated\*. Leading edge is rounded to permit locking washer plate to slide into position easily.

### BOLTS:

Type 304 stainless steel, 5/8" rolled NC thread in sizes 4" and larger (1/2" in sizes below 4"). Bolts are MIG welded to bolt bar and fully passivated\*.

### NUTS:

Type 304 stainless steel, heavy hex.  
PTFE coated to prevent galling.

### BOLTS AND RECEIVER BARS:

Type 304, 12 gauge stainless steel. TIG welded to shell to form a strong fusion and fully passivated\*.

\*Clamps are chemically cleaned after welding to maintain the original passive state of the stainless steel.



### WASHERS:

Nylon

### GASKET:

Gridded Nitrile Buna Rubber is especially resistant to aromatic hydrocarbons, gasoline, petroleum oils, mineral oils, vegetable oils and natural gas.

### ARMOR:

Type 304 stainless steel, heavy gauge, molded into gasket to prevent "hanging-up" during installation.

### PRESSURE RATING:

125 PSI through 12" pipe size.  
75 PSI over 12" pipe size.

### TEMPERATURE:

-20 degrees F to +180 degrees F.

### CROSS-REFERENCE CHART

Clampette	331	332	333	6"	8"	10"	12"	16"	20"	24"	30"
Baker	332	334	-	7-1/2"	11-1/4"	15"	22-1/2"	-	-	-	-
Cascade	CR-1	CR-2	CR-3	6"	8"	10"	12"	16"	20"	24"	30"
Dresser	360	361	-	6"	8"	10"	12"	14"	16"	20"	30"
Ford	FS1	FS2	FS3	7-1/2"	8"	10"	12"	16"	18"	20"	30"
JCM	131	132	-	6"	7-1/2"	10"	12"	16"	18"	20"	24"
Smith-Blair	261	262	263	7-1/2"	-	10"	12-1/2"	15"	20"	24"	30"
Romac	551	552	553	6"	8"	10"	12"	16"	20"	24"	-



# Full Wrap Clamps



### Number of Bolts Per Clamp

6" Length Clamp	2 Bolts
8" Length Clamp	2 Bolts
10" Length Clamp	3 Bolts
12" Length Clamp	3 Bolts (Under 10" OD) 4 Bolts (Over 10" OD)
16" Length Clamp	4 Bolts (Under 10" OD) 5 Bolts (Over 10" OD)
20" Length Clamp	5 Bolts (Under 10" OD) 7 Bolts (Over 10" OD)
24" Length Clamp	6 Bolts (Under 10" OD) 8 Bolts (Over 10" OD)
30" Length Clamp	10 Bolts (Always)

331	Full Wrap Clamp	NOMINAL PIPE SIZE (INCHES)	CLAMP O.D. RANGE (INCHES)
		For Nominal Pipe Size	
	331-263-(W)	2"	2.32 - 2.63
	331-287-(W)	2-1/4"	2.57 - 2.87
	331-300-(W)	2-1/4" - 2-1/2"	2.70 - 3.00
	331-325-(W)	3"	2.95 - 3.25
	331-370-(W)	3"	3.40 - 3.70
	331-400-(W)	3" - 4"	3.71 - 4.00
	331-475-(W)	4"	4.45 - 4.75
	331-515-(W)	4"	4.75 - 5.15
	331-535-(W)	4" - 5"	4.95 - 5.35
	331-560-(W)	4" - 5"	5.20 - 5.60
	331-635-(W)	6"	5.95 - 6.35
	331-695-(W)	6"	6.55 - 6.95
	331-724-(W)	6"	6.84 - 7.24
	331-745-(W)	6"	7.05 - 7.45
	331-785-(W)	6"	7.45 - 7.85
	331-835-(W)	8"	7.95 - 8.35
	331-899-(W)	8"	8.59 - 8.99
	331-940-(W)	8"	9.00 - 9.40
	331-970-(W)	8"	9.30 - 9.70
	331-1015-(W)	8" - 10"	9.75 - 10.15
	331-1105-(W)	10"	10.65 - 11.05
	331-1144-(W)	10"	11.04 - 11.44
	331-1175-(W)	10"	11.35 - 11.75
	331-1215-(W)	10"	11.75 - 12.15
	331-1235-(W)	10"	11.95 - 12.35
	331-1305-(W)	12"	12.65 - 13.05
	331-1350-(W)	12"	13.10 - 13.50
	331-1380-(W)	12"	13.40 - 13.80
	331-1410-(W)	12" - 14"	13.70 - 14.10
	331-1440-(W)	12" - 14"	14.00 - 14.40

**IMPORTANT!** When ordering Full Wrap Clamps, "(W)" in part number refers to width of clamp. Example: To order a 331-263 (2" nominal size, O.D. Range of 2.32 - 2.63"), which is 16" in width, order model number 331-263-16.



331	Full Wrap Clamp - CTS	DESCRIPTION	BOX QUANTITY	WEIGHT EACH
		For Copper Tube Size		
	331-213-6CTS	6" Wide - Fits 2" CTS	1	4.0
	331-326-6CTS	6" Wide - Fits 3" CTS	1	4.5
	331-413-8CTS	8" Wide - Fits 4" CTS	1	6.8

**Note:** All clamps packaged one per box. Larger diameter clamps are available. Clamps are supplied with Buna N gaskets.

# Full Wrap

## Product #331 Full Wrap Clamp - Weights

**IMPORTANT!** When ordering Full Wrap Clamps, "(W)" in part number refers to width of clamp. Example: To order a 331-263 (2" nominal size, O.D. Range of 2.32 - 2.63"), which is 16" in width, order model number 331-263-16.

Weights indicated below are per piece in lbs.

MATCO-NORCA MODEL NUMBER	NOMINAL PIPE SIZE (INCHES)	CLAMP O.D. RANGE (INCHES)	6"	8"	10"	12"	16"	20"	24"	30"
331-263-(W)	2"	2.32 - 2.63	4.0	4.7	6.1	7.0	8.5	-	-	-
331-287-(W)	2-1/4"	2.57 - 2.87	4.4	4.9	6.5	7.6	9.1	-	-	-
331-300-(W)	2-1/4" - 2-1/2"	2.70 - 3.00	4.4	4.9	7.0	7.7	9.6	-	-	-
331-325-(W)	3"	2.95 - 3.25	4.5	5.2	7.0	7.8	10.2	-	-	-
331-370-(W)	3"	3.40 - 3.70	4.7	5.6	7.3	8.0	10.6	-	-	-
331-400-(W)	3" - 4"	3.71 - 4.00	-	5.8	7.5	8.3	10.8	-	-	-
331-475-(W)	4"	4.45 - 4.75	-	6.3	8.3	9.4	12.9	-	-	-
331-515-(W)	4"	4.75 - 5.15	-	6.3	8.5	9.6	13.2	17.7	-	-
331-535-(W)	4" - 5"	4.95 - 5.35	-	6.8	9.0	10.0	13.7	18.3	-	-
331-560-(W)	4" - 5"	5.20 - 5.60	-	7.1	9.2	10.3	14.0	18.8	-	-
331-635-(W)	6"	5.95 - 6.35	-	7.3	9.9	10.8	14.7	19.3	-	-
331-695-(W)	6"	6.55 - 6.95	-	7.8	10.7	11.4	15.4	20.1	20.1	24.5
331-724-(W)	6"	6.84 - 7.24	-	8.0	11.0	11.7	15.7	20.7	20.7	25.8
331-745-(W)	6"	7.05 - 7.45	-	8.2	11.3	12.0	16.1	21.5	21.5	26.5
331-785-(W)	6"	7.45 - 7.85	-	8.4	11.7	12.5	16.5	22.8	22.8	28.0
331-835-(W)	8"	7.95 - 8.35	-	8.7	12.1	13.2	17.1	23.6	23.6	29.2
331-899-(W)	8"	8.59 - 8.99	-	8.8	12.4	13.4	17.3	23.9	23.9	29.8
331-940-(W)	8"	9.00 - 9.40	-	8.9	12.7	13.5	17.6	24.8	24.8	30.7
331-970-(W)	8"	9.30 - 9.70	-	9.1	12.9	13.7	17.9	25.2	25.2	31.5
331-1015-(W)	8" - 10"	9.75 - 10.15	-	10.2	13.6	14.4	18.5	26.5	26.5	35.2
331-1105-(W)	10"	10.65 - 11.05	-	10.7	13.9	16.9	20.8	27.6	27.6	37.6
331-1144-(W)	10"	11.04 - 11.44	-	12.5	14.0	17.3	22.9	31.2	31.2	39.3
331-1175-(W)	10"	11.35 - 11.75	-	12.8	14.4	17.8	23.1	33.5	33.4	42.1
331-1215-(W)	10"	11.75 - 12.15	-	13.2	14.8	18.5	24.0	34.5	34.5	44.8
331-1235-(W)	10"	11.95 - 12.35	-	13.6	15.3	19.1	26.3	36.2	36.2	45.3
331-1305-(W)	12"	12.65 - 13.05	-	14.1	16.0	20.5	28.1	37.0	37.0	46.5
331-1350-(W)	12"	13.10 - 13.50	-	15.3	17.5	20.9	28.7	38.3	38.3	47.4
331-1380-(W)	12"	13.40 - 13.80	-	15.6	18.0	21.3	29.4	39.2	39.2	48.2
331-1410-(W)	12" - 14"	13.70 - 14.10	-	16.4	18.4	21.5	29.6	39.9	39.9	48.8
331-1440-(W)	12" - 14"	14.00 - 14.40	-	16.8	19.1	22.4	30.0	41.6	41.6	52.3

**Note:** All clamps packaged one per box. Larger diameter clamps are available. Clamps are supplied with Buna N gaskets.

# Compression Products




440	MATCO-NORCA MODEL NUMBER	PIPE SIZE	LENGTH	BARRELL LENGTH	CARTON QUANTITY		WEIGHT PER 100 PIECES
					INNER	MASTER	
<b>Malleable Compression Coupling</b>							<b>Galvanized</b>
<b>Regular</b>							
	440T02C	3/8"	2.63"	2.09"	12	72	50
	440T03C	1/2"	2.70"	2.25"	12	48	55
	440T04C	3/4"	3.07"	2.56"	12	48	88
	440T05C	1"	3.43"	2.76"	12	48	121
	440T06C	1-1/4"	3.39"	2.84"	6	24	156
	440T07C	1-1/2"	3.39"	2.84"	6	24	218
	440T08C	2"	3.86"	3.23"	6	12	251
	440T09C	2-1/2"	4.26"	3.66"	6	12	540
	440T10C	3"	5.12"	4.06"	3	6	730
<b>Long</b>							
	440L03C	1/2"	3.94"	3.43"	12	48	83
	440L04C	3/4"	4.26"	3.74"	12	48	115
	440L05C	1"	4.61"	3.94"	6	24	150
	440L06C	1-1/4"	4.65"	4.14"	6	24	207
	440L07C	1-1/2"	4.93"	4.37"	6	24	255
	440L08C	2"	5.20"	4.57"	6	12	378
	440L09C	2-1/2"	5.71"	5.16"	3	12	421
	440L10C	3"	7.29"	6.23"	2	6	667
	440L11C	4"	8.39"	7.25"	2	4	871


448	<b>Malleable Compression Coupling</b>						<b>Black</b>
<b>Long Only</b>							
	448T03C	1/2"	3.94"	3.43"	12	48	85
	448T04C	3/4"	4.26"	3.74"	12	48	115
	448T05C	1"	4.61"	3.94"	6	24	150
	448T06C	1-1/4"	4.65"	4.14"	6	24	201
	448T07C	1-1/2"	4.93"	4.37"	6	24	255
	448T08C	2"	5.20"	4.57"	6	12	378

445	<b>Malleable Compression Adapters</b>				<b>Galvanized</b>		
<b>Male</b>							
	445T03C	1/2" Comp x 1/2" MIPT			12	24	35
	445T04C	3/4" Comp x 3/4" MIPT			12	24	54
	445T05C	1" Comp x 1" MIPT			4	16	76
	445T06C	1-1/4" Comp x 1-1/4" MIPT			4	16	105
	445T07C	1-1/2" Comp x 1-1/2" MIPT			4	16	127
	445T08C	2" Comp x 2" MIPT			4	16	206


# Parts For Compression Products


440		MATCO-NORCA MODEL NUMBER	SIZE
	<b>BUNA-N Gaskets</b>		
	<b>For Malleable Compression Couplings</b>		
	P-440T02CG	3/8"	
	P-440T03CG	1/2"	
	P-440T04CG	3/4"	
	P-440T05CG	1"	
	P-440T06CG	1-1/4"	
	P-440T07CG	1-1/2"	
	P-440T08CG	2"	
	P-440T09CG	2-1/2"	
	P-440T10CG	3"	
P-440T11CG	4"		


440		MATCO-NORCA MODEL NUMBER	SIZE
	<b>Retainer Rings</b>		
	<b>For Malleable Compression Couplings</b>		
	P-440T02CRR	3/8"	
	P-440T03CRR	1/2"	
	P-440T04CRR	3/4"	
	P-440T05CRR	1"	
	P-440T06CRR	1-1/4"	
	P-440T07CRR	1-1/2"	
	P-440T08CRR	2"	
	P-440T09CRR	2-1/2"	
	P-440T10CRR	3"	
P-440T11CRR	4"		

440		MATCO-NORCA MODEL NUMBER	SIZE
	<b>Replacement Nuts</b>		
	<b>For Malleable Compression Couplings</b>		
	P-440T02CN	3/8"	
	P-440T03CN	1/2"	
	P-440T04CN	3/4"	
	P-440T05CN	1"	
	P-440T06CN	1-1/4"	
	P-440T07CN	1-1/2"	
	P-440T08CN	2"	
	P-440T09CN	2-1/2"	
	P-440T10CN	3"	
P-440T11CN	4"		

400		MATCO-NORCA MODEL NUMBER	SIZE
	<b>Rubber Gaskets</b>		
	<b>For PVC Compression Couplings</b>		
	P-400T02G	3/8"	
	P-400T03G	1/2"	
	P-400T04G	3/4"	
	P-400T05G	1"	
	P-400T06G	1-1/4"	
	P-400T07G	1-1/2"	
	P-400T08G	2"	
	P-400T09G	2-1/2"	
	P-400T10G	3"	
P-400T11G	4"		

400		MATCO-NORCA MODEL NUMBER	SIZE
	<b>Replacement Nuts</b>		
	<b>For PVC Compression Couplings</b>		
	P-400T02N	3/8"	
	P-400T03N	1/2"	
	P-400T04N	3/4"	
	P-400T05N	1"	
	P-400T06N	1-1/4"	
	P-400T07N	1-1/2"	
	P-400T08N	2"	
	P-400T09N	2-1/2"	
	P-400T10N	3"	
P-400T11N	4"		

450		MATCO-NORCA MODEL NUMBER	SIZE
	<b>Replacement Gaskets</b>		
	<b>For Brass Compression Couplings</b>		
	P-450T02G	3/8"	
	P-450T03G	1/2"	
	P-450T04G	3/4"	
	P-450T05G	1"	
	P-450T06G	1-1/4"	
	P-450T07G	1-1/2"	
	P-450T08G	2"	
	P-450T09G	2" Copper	

450		MATCO-NORCA MODEL NUMBER	SIZE
	<b>Replacement Nuts</b>		
	<b>For Brass Compression Couplings</b>		
	P-450T02N	3/8"	
	P-450T03N	1/2"	
	P-450T04N	3/4"	
	P-450T05N	1"	
	P-450T06N	1-1/4"	
	P-450T07N	1-1/2"	
	P-450T08N	2"	
	P-450T09N	2" Copper	

# Pipe Outside Diameter Guide

**Note:** Outside diameter of pipe may change from time to time. The information contained in this chart is the best available from various manufacturers at the time of printing An O.D. tape should be used to confirm these diameters prior to ordering clamps.

	1/2"	3/4"	1"	1-1/4"	1-1/2"	2"	2-1/2"	3"	4"	5"	6"	8"	10"	12"	14"	15"	16"	18"	20"	24"	30"
<b>CAST IRON PIPE</b>																					
Class 100-250 AWWA Centrifugal								3.96	4.80		6.90	9.05	11.10	13.20	15.30		17.40	19.50	21.60	25.80	32.00
Class A AWWA Pit Cast & Ductile Iron						2.50		3.80	4.80		6.90	9.05	11.10	13.20	15.30		17.40	19.50	21.60	25.80	31.74
Class B AWWA Pit Cast								3.96	5.00		7.10	9.05	11.10	13.20	15.30		17.40	19.50	21.60	25.80	32.00
Class C-D AWWA Pit Cast								3.96	5.00		7.10	9.30	11.10	13.50	15.65		17.80	19.92	22.06	26.32	
<b>MISC PIPING</b>																					
Copper Tubing	.63	.88	1.13	1.38	1.63	2.13	2.63	3.13	4.13	5.13	6.13										
Steel Pipe - Schedule 40	.84	1.05	1.32	1.66	1.90	2.38	2.88	3.50	4.50	5.56	6.63	8.63	10.75	12.75	14.00		16.00	18.00	20.00	24.00	30.00
Plastic Pipe - (PVC) - Std.			1.32		1.90	2.38	2.88	3.50	4.50	5.56	6.63	8.63	10.75	12.75							
Plastic Pipe - (PVC) - C.I. Size									4.80		6.90	9.05	11.10	13.20							
Plastic Pipe Irrigation Pipe									4.13		6.14	8.16	10.20	12.24		15.30					
Plastic Sewer Pipe ASTM D-3034									4.22		6.28	8.40	10.50	12.50		15.30					
Polyethylene Pipe - (IPS)		1.06	1.35	1.77	2.07	2.66															
<b>ASBESTOS - CEMENT PIPE</b>																					
CLASS 100																					
Machined End								3.74	4.64		6.91	9.11	11.24	13.40	15.07		17.15				
Fluid-Tite Rough Barrel								3.93	5.05		7.16	9.32	11.46	13.70	15.36		17.50				
Flintite Rough Barrel								3.94	4.90		7.13	9.33	11.30	13.42	15.45		17.60				
Ring-Tite Rough Barrel								3.95	4.92		7.19	9.39	11.47	13.74	15.51		17.65				
Permafex Rough Barrel									4.84		7.15	9.35	11.25	13.74	15.55		17.55				
Minimum Std. Rough Barrel									4.79		7.05	9.22	11.77	13.37	15.36		17.50				
Maximum Std. Rough Barrel									5.26		7.40	9.57	11.77	14.04	15.80		17.94				
CLASS 150																					
Machined End								3.84	4.81		6.91	9.11	11.66	13.92	16.22		18.46				
Fluid-Tite Rough Barrel								4.03	5.14		7.12	9.32	11.85	14.11	16.41		18.65				
Flintite Rough Barrel								4.04	5.01		7.13	9.33	11.88	14.14	16.48		18.72				
Ring-Tite Rough Barrel								4.13	5.07		7.17	9.37	11.92	14.18	16.48		18.72				
Permafex Rough Barrel									5.00		7.20	9.40	11.92	14.20	16.50		18.75				
Minimum Std. Rough Barrel									4.97		7.07	9.27	11.82	14.08	16.38		18.62				
Maximum Std. Rough Barrel									5.32		7.37	9.62	12.12	14.38		18.97					
CLASS 200																					
Machined End								3.84	4.81		6.91	9.11	11.66	13.92	16.22		18.46				
Fluid-Tite Rough Barrel								4.18	5.32		7.36	9.46	11.88	14.11	16.44		18.74				
Flintite Rough Barrel								4.17	5.32		7.26	9.44	11.88	14.14	16.53		18.84				
Ring-Tite Rough Barrel								4.17	5.33		7.32	9.50	11.92	14.18	16.55		18.90				
Permafex Rough Barrel									5.32		7.26	9.50	11.95	14.20	16.55		18.90				
Minimum Std. Rough Barrel									5.22		7.26	9.39	11.77	14.03	16.44		18.74				
Maximum Std. Rough Barrel									5.57		7.60	9.39	12.12	14.38	16.88		19.19				

# Notes

## Have You Ever Had Your Stainless Steel Patch Clamps Damaged Because Of Poor Packaging?



### TRY OUR TEXAS TWO-STEP!

#### START WITH OUR STANDARD

##### CLAMPETTE PACKAGE...

Note our easy to read, distinctive orange label with UPC bar code.

##### STEP ONE -

Even our 213 lb. truck driver can not damage our quadruple-thick, fold-up box! Our box was barely dented in this test!



##### STEP TWO -

As you can see the product is undamaged.

The best clamps in the best packaging!!



# Matco-Norca Product Lines

## Valves



514T



759T



521C



B5-LGG



205F



120WC

## Fittings & Nipples



150# Black  
Malleable Tee



Brass  
Coupling



300# Galvanized  
Elbow



Dielectric  
Union



Steel  
Nipples



Brass  
Nipples

## Faucets



Padova



Crescendo



Portia



Positano



Builder Light



Classic



Value Engineered

## Plumbing Specialties



29-1003PX



SSF12



M350



TWB-100



SDBC 200



SS-100

For more information about our Extensive Product Lines visit our website at [www.matco-norca.com](http://www.matco-norca.com)

 **MATCO-NORCA**  
Global sourcing. National compliance. Local service.

**CALIFORNIA** 5593 Fresca Dr., La Palma CA 90623 • Toll Free: 866-532-8306 • Fax: 866-532-8307  
**TEXAS** 1150 Silber Rd., Houston TX 77055 • Toll Free: 800-935-5456 • Fax: 713-680-2999  
**NEW YORK** PO Box 27, Rt. 22, Brewster NY 10509 • Toll Free: 800-431-2082 • Fax: 845-278-9056  
WEB: [www.matco-norca.com](http://www.matco-norca.com) EMAIL: [mail@matco-norca.com](mailto:mail@matco-norca.com)