

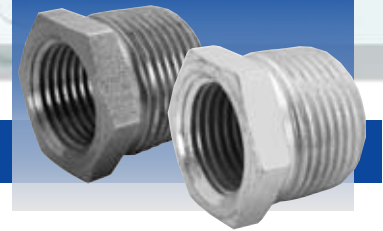
ISO 9002
CERTIFIED



STEEL PLUGS & BUSHINGS

PL-0502-PB

PRICES EFFECTIVE FEBRUARY 1, 2005



STEEL MERCHANT HEX BUSHINGS

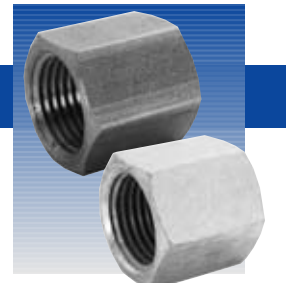
SIZE NOMINAL	PART NUMBER		LENGTH OVERALL (INCHES)	WIDTH ACROSS FLATS (INCHES)	QUANTITY PER CARTON	WEIGHT LBS. PER 100 PIECES	PRICES (PER 100 PIECES)	
	BLACK	GALVANIZED					BLACK	GALVANIZED
1/4" x 1/8"	M-BUB0100	M-BUG0100	.625	.625	100	2	24.40	26.90
3/8" x 1/8"	M-BUB0200	M-BUG0200	.75	.687	100	5	27.70	30.00
3/8" x 1/4"	M-BUB0201	M-BUG0201	.75	.687	100	4	27.70	30.00
1/2" x 1/8"	M-BUB0300	M-BUG0300	.875	.875	100	10	42.00	47.90
1/2" x 1/4"	M-BUB0301	M-BUG0301	.875	.875	100	9	42.00	47.90
1/2" x 3/8"	M-BUB0302	M-BUG0302	.875	.875	100	6	42.00	47.90
3/4" x 1/8"	M-BUB0400	M-BUG0400	1	1.062	50	20	68.90	78.00
3/4" x 1/4"	M-BUB0401	M-BUG0401	1	1.062	50	17	68.90	78.00
3/4" x 3/8"	M-BUB0402	M-BUG0402	1	1.062	50	15	68.90	78.00
3/4" x 1/2"	M-BUB0403	M-BUG0403	1	1.062	50	11	68.90	78.00

STEEL MERCHANT SQUARE HEAD PLUGS



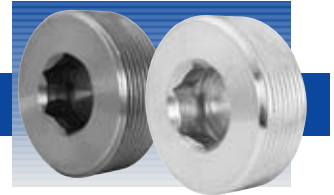
SIZE NOMINAL	PART NUMBER		LENGTH OVERALL MINIMUM (INCHES)	WIDTH ACROSS FLATS (INCHES)	THREADS PER INCH	QUANTITY PER CARTON	WEIGHT LBS. PER 100 PIECES	PRICES (PER 100 PIECES)	
	BLACK	GALVANIZED						BLACK	GALV.
1/8"	M-PB00	M-PG00	.630	9/32"	27	100	2	8.70	10.80
1/4"	M-PB01	M-PG01	.690	3/8"	18	100	2	12.40	14.30
3/8"	M-PB02	M-PG02	.810	7/16"	18	100	5	16.20	18.70
1/2"	M-PB03	M-PG03	.940	9/16"	14	100	10	24.20	29.30
3/4"	M-PB04	M-PG04	1.080	5/8"	14	50	18	39.90	47.60

STEEL MERCHANT HEX CAPS



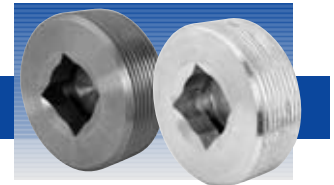
SIZE NOMINAL	PART NUMBER		QUANTITY PER CARTON	WEIGHT LBS. PER 100 PIECES	PRICES (PER 100 PIECES)	
	BLACK	GALVANIZED			BLACK	GALV.
1/8"	M-CAB00	M-CAG00	100	2	36.10	39.10
1/4"	M-CAB01	M-CAG01	100	4	38.70	41.60
3/8"	M-CAB02	M-CAG02	100	8	45.40	53.90
1/2"	M-CAB03	M-CAG03	50	14	70.50	82.40
3/4"	M-CAB04	M-CAG04	50	22	89.80	121.80

STEEL MERCHANT COUNTERSUNK PLUGS – HEXAGON SOCKET



SIZE NOMINAL	PART NUMBER		LENGTH OVERALL MINIMUM (INCHES)	SOCKET SIZE MINIMUM (INCHES)	METAL THICKNESS BOTTOM COUNTERSINK MINIMUM	THREADS PER INCH	QUANTITY PER CARTON	WEIGHT LBS. PER 100 PIECES	PRICES (PER 100 PIECES)	
	BLACK	GALVANIZED							BLACK	GALVANIZED
1/8"	M-PHSB00	M-PHSG00	.31	3/16	.06	27	100	1	8.70	10.70
1/4"	M-PHSB01	M-PHSG01	.44	1/4	.09	18	100	1	13.40	16.30
3/8"	M-PHSB02	M-PHSG02	.48	5/16	.13	18	100	4	16.90	19.50
1/2"	M-PHSB03	M-PHSG03	.56	3/8	.16	14	100	6	21.30	25.20
3/4"	M-PHSB04	M-PHSG04	.63	9/16	.18	14	50	11	38.30	44.30
1"	M-PHSB05	M-PHSG05	.75	5/8	.20	11-1/2	75	21	83.20	101.70
1-1/4"	M-PHSB06	M-PHSG06	.80	3/4	.25	11-1/2	50	34	163.20	199.10
1-1/2"	M-PHSB07	M-PHSG07	.83	1	.25	11-1/2	25	52	343.90	429.90
2"	M-PHSB08	M-PHSG08	.88	1	.25	11-1/2	20	85	558.90	630.50

STEEL MERCHANT COUNTERSUNK PLUGS – SQUARE SOCKET



SIZE NOMINAL	PART NUMBER		LENGTH OVERALL MINIMUM (INCHES)	SOCKET SIZE MINIMUM (INCHES)	METAL THICKNESS BOTTOM COUNTERSINK MINIMUM	THREADS PER INCH	QUANTITY PER CARTON	WEIGHT LBS. PER 100 PIECES	PRICES (PER 100 PIECES)	
	BLACK	GALVANIZED							BLACK	GALVANIZED
1/4"	M-PSSB01	M-PSSG01	.44	1/4"	.08	18	100	1	13.40	16.30
3/8"	M-PSSB02	M-PSSG02	.48	5/16"	.13	18	100	4	16.90	19.50
1/2"	M-PSSB03	M-PSSG03	.56	3/8"	.16	14	100	8	21.30	25.20
3/4"	M-PSSB04	M-PSSG04	.63	1/2"	.18	14	50	11	38.30	44.30
1"	M-PSSB05	M-PSSG05	.75	1/2"	.20	11-1/2	75	21	83.20	101.70
1-1/4"	M-PSSB06	M-PSSG06	.80	3/4"	.25	11-1/2	50	34	163.20	199.10
1-1/2"	M-PSSB07	M-PSSG07	.83	3/4"	.25	11-1/2	25	52	343.90	429.90
2"	M-PSSB08	M-PSSG08	.88	7/8"	.26	11-1/2	20	85	558.90	630.50

STEEL MERCHANT HEX HEAD PLUGS



SIZE NOMINAL	PART NUMBER		THREADS PER INCH	QUANTITY PER CARTON	WEIGHT LBS. PER 100 PIECES	PRICES (PER 100 PIECES)	
	BLACK	GALVANIZED				BLACK	GALV.
1/8"	M-PHHB00	M-PHHG00	27	100	2	15.30	19.00
1/4"	M-PHHB01	M-PHHG01	18	100	2	21.80	25.00
3/8"	M-PHHB02	M-PHHG02	18	100	5	28.80	32.80
1/2"	M-PHHB03	M-PHHG03	14	100	10	42.40	51.20
3/4"	M-PHHB04	M-PHHG04	14	50	18	69.80	83.40



Visit Our Web Site: www.matco-norca.com

e-mail: mail@matco-norca.com

MATCO-NORCA, INC.
CENTRAL REGION
HOUSTON, TEXAS

1150 Silber Road Houston, TX 77055
Tel: 713-680-2888 Fax: 713-680-2999

TOLL FREE:

Tel: 800-935-5456 Fax: 800-683-4247

MATCO-NORCA, INC.
CORPORATE HEADQUARTERS
BREWSTER, NEW YORK

P.O. Box 27 Route 22 Brewster, NY 10509
Tel: 845-278-7570 Fax: 845-278-9056

TOLL FREE:

Tel: 800-431-2082 Fax: 800-640-2252

MATCO-NORCA, INC.
WESTERN REGION
LA PALMA, CALIFORNIA

5593 Fresca Drive La Palma, CA 90623
Tel: 714-522-1889 Fax: 714-522-3828

TOLL FREE:

Tel: 866-532-8306 Fax: 866-532-8307