

- BL-720C6**
- BL-730C6**
- BL-720C6JP**
- BL-730C6JP**

- BL-720BN6**
- BL-730BN6**
- BL-720BN6JP**
- BL-730BN6JP**

- BL-720ORB6**
- BL-730ORB6**
- BL-720ORB6JP**
- BL-730ORB6JP**



Single Handle Tub & Shower Faucet

Product Spec Sheet



FEATURES & BENEFITS

- Metal Lever Handle
- Washerless Pressure Balancing Valve
- Metal Slip Fit Diverter Spout
- 6" Showerhead With Brass Ball Joint
- Max Flow Rate 1.75 gpm (6.6 L/min) at 80 psi
- Min Flow Rate 1.3 gpm (4.92 L/min) at 45 psi
(ASME A112.18.1M/A112.18.1)

BL-730C6
Tub & Shower Faucet
Chrome Finish

BL-730BN6
Tub & Shower Faucet
Brushed Nickel Finish

BL-730ORB6
Tub & Shower Faucet
Oil Rubbed Bronze Finish

BL-720C6
Shower Only Faucet
Chrome Finish

BL-720BN6
Shower Only Faucet
Brushed Nickel Finish

BL-720ORB6
Shower Only Faucet
Oil Rubbed Bronze Finish

BL-730C6JP
Trim Kit For Tub & Shower Faucet
Chrome Finish

BL-730BN6JP
Trim Kit For Tub & Shower Faucet
Brushed Nickel Finish

BL-730ORB6JP
Trim Kit For Tub & Shower Faucet
Oil Rubbed Bronze Finish

BL-720C6JP
Trim Kit For Shower Only Faucet
Chrome Finish

BL-720BN6JP
Trim Kit For Shower Only Faucet
Brushed Nickel Finish

BL-720ORB6JP
Trim Kit For Shower Only Faucet
Oil Rubbed Bronze Finish

APPROVALS:

Meets or Exceeds The Following:

* ANSI/ASME A112.18.1M/A112.18.1

* IAPMO/cUPC



* WaterSense Only On Models Containing Showerheads

CALIFORNIA:
TEXAS:
NEW YORK:
ILLINOIS:

TEL: 866-532-8306
TEL: 800-935-5456
TEL: 800-431-2082
TEL: 844-412-5068

FAX: 866-532-8307
FAX: 800-683-4247
FAX: 800-640-2252
FAX: 800-640-2252

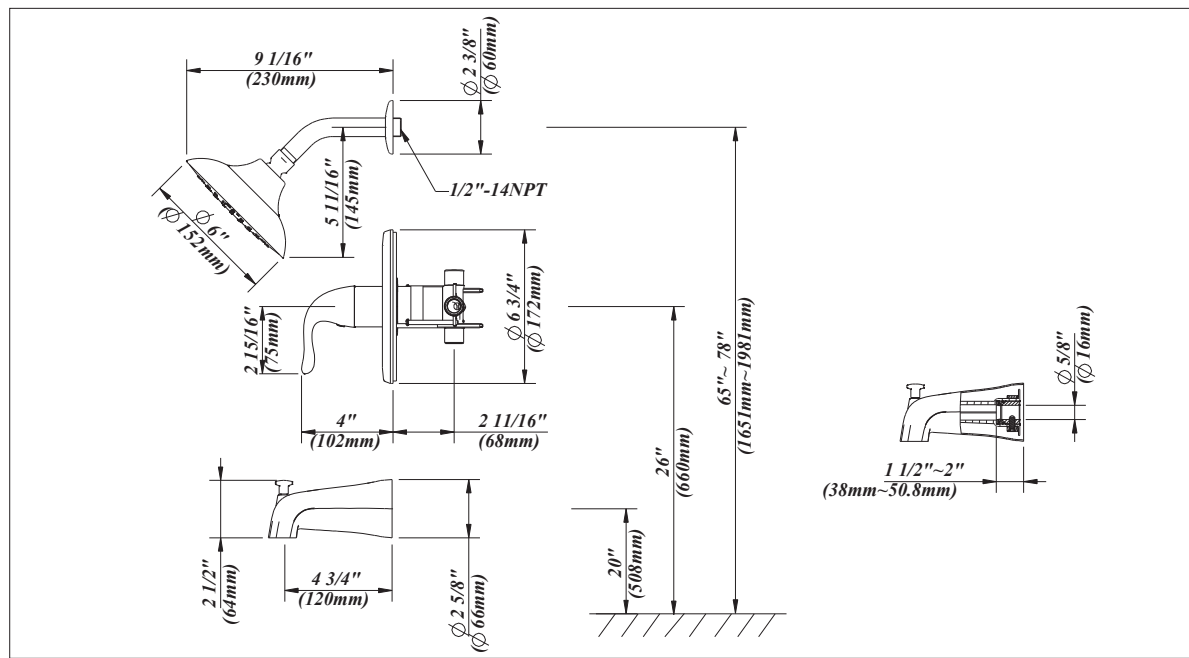
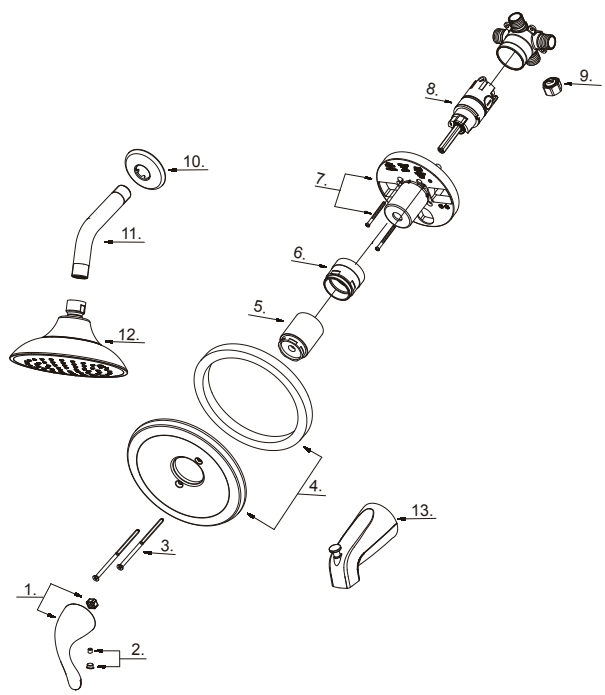
Visit Our Web Site : www.matco-norca.com

- BL-720C6** **BL-720BN6** **BL-720ORB6**
- BL-730C6** **BL-730BN6** **BL-730ORB6**
- BL-720C6JP** **BL-720BN6JP** **BL-720ORB6JP**
- BL-730C6JP** **BL-730BN6JP** **BL-730ORB6JP**



Single Handle Tub & Shower Faucet

No.	Name	Part No.
1	Metal Handle Assembly	A66E659
2	Index Bottom	A66D568
3	Screw Set (For CP/BN) (3/16" -24 * 4 " L)	A608563
	Screw Set(For ORB) (3/16" -24 * 4 " L)	A608564
4	Escutcheon Assembly	A667915
5	Sleeve	A103322
6	Retainer Nut	A103310
7	Plaster Guard Assembly	A613257
8	Washerless Cartridge Assembly	A507975
9	Plug	A028452
10	Shower Arm Flange	A019001-S
11	Shower Arm	A020002
12	Shower Head 1.75gpm	S1213608
13	Spout W/Diverter	A118011



Product Spec Sheet

CALIFORNIA: **TEL: 866-532-8306** **FAX: 866-532-8307**
TEXAS: **TEL: 800-935-5456** **FAX: 800-683-4247**
NEW YORK: **TEL: 800-431-2082** **FAX: 800-640-2252**
ILLINOIS: **TEL: 844-412-5068** **FAX: 800-640-2252**

Visit Our Web Site : www.matco-norca.com