

SINGLE HANDLE KITCHEN FAUCET

Product Spec Sheet



FEATURES & BENEFITS

- Solid Brass Body
- 1/2"-14 NPS Inlet
- Two Hole or Four Fole Installation
- Metal Lever Handle
- ADA Compliant
- Drip-free Ceramic Cartridge
- With Spray
- 100% Factory Pressure Tested Before Shipment

- * AE-295
Chrome Finish
- * AE-295S
Brushed Nickel Finish

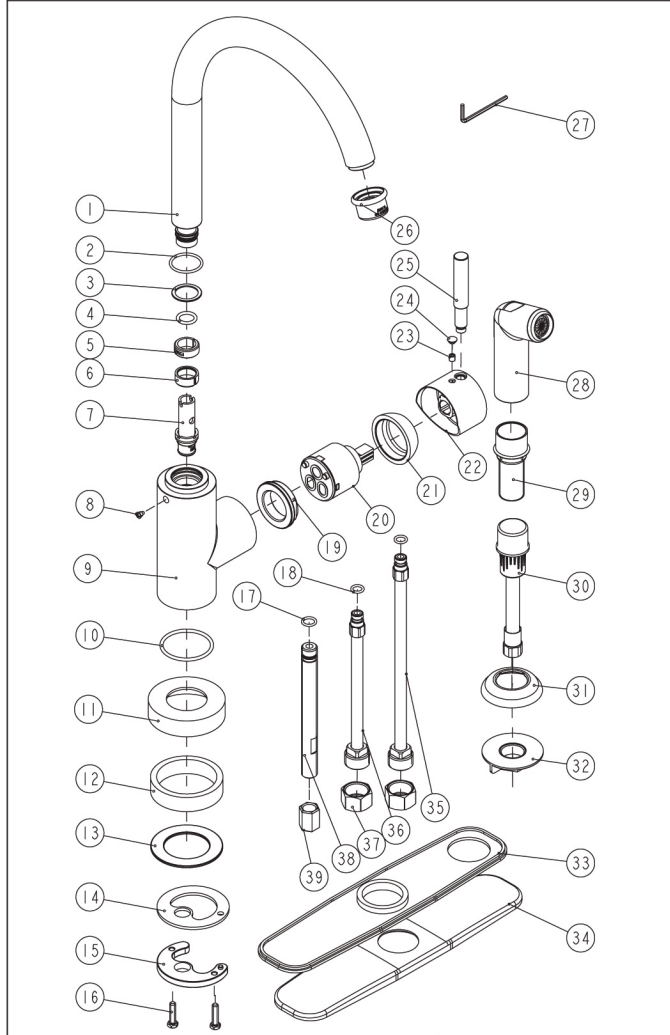
Approvals:
Meets or Exceeds The Following:
* ANSI/ASME A112.18.1
* CSA B125.1
* IAPMO/UPC



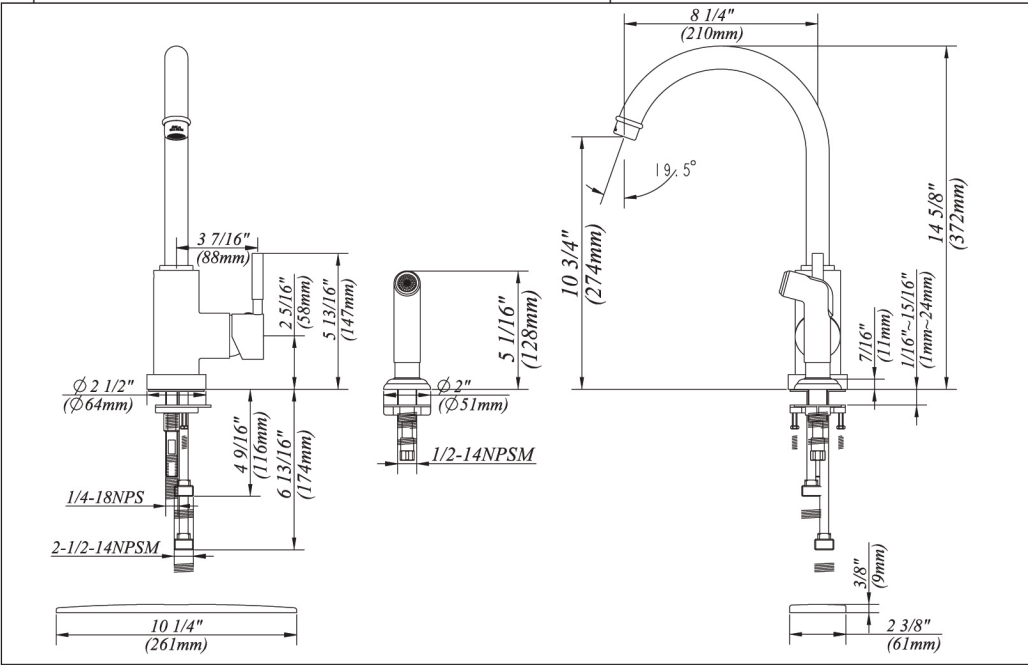
AE-295/ AE-295S SINGLE HANDLE KITCHEN FAUCET



No	Part Title	Material
1.	Spout	Brass
2.	O-Ring	Rubber
3.	Washer	Plastic
4.	O-Ring	Rubber
5.	C-Clip	Plastic
6.	C-Clip	Rubber
7.	Diverter Assembly	Plastic
8.	Screw	Brass
9.	Body	Brass
10.	O-Ring	Rubber
11.	Bottom Cover	Brass
12.	Seal	Rubber
13.	Seal	Rubber
14.	Washer	Stainless Steel
15.	Washer	Brass
16.	Screw	Stainless Steel
17.	O-Ring	Rubber
18.	O-Ring	Rubber
19.	Retainer nut	Brass
20.	Cartridge Assembly	Brass/Ceramic
21.	Cap	Brass
22.	Canopy	Brass
23.	Screw	Stainless Steel
24.	Insert	Silicon
25.	Handle	Brass
26.	Aerator Assembly	Brass / Plastic
27.	Wrench	Iron
28.	Spray Head	Plastic
29.	Screw Stem	Plastic
30.	Spray Hose	Plastic
31.	Spray Flange	Brass
32.	Nut	Plastic
33.	Bottom Plate	Plastic
34.	Cover Plate	Zinc
35.	Connecting Tube	Stainless Steel
36.	Connecting Tube	Stainless Steel
37.	Nut	Brass
38.	Connecting Tube	Brass
39.	Nut	Brass



Product Spec Sheet



Approvals:
 Meets or Exceeds
 The Following:
 * ANSI/ASME A112.18.1
 * CSA B125.1
 * IAPMO/UPC



BREWSTER, NY: P.O. BOX 27 Route 22 Brewster, NY 10509
HOUSTON, TX: 1150 Silber Road Houston, TX 77055
LA PALMA, CA: 5593 Fresca Drive La Palma, CA 90623

Visit Our Web Site : www.matco-norca.com