

AE-155 ROMAN TUB FAUCET



TWO HANDLE - CERAMIC CARTRIDGE



FEATURES & BENEFITS

- ❖ Solid Brass Bodies
- ❖ Fits 8" - 16" Centers
- ❖ 1/2" or 3/4" NPT Inlet
- ❖ Solid Brass Lever Handle
- ❖ ADA Compliant
- ❖ Drip-free Ceramic Cartridge
- ❖ 100% Factory Pressure Tested Before Shipment

ALSO AVAILABLE:

AE-155S - With
Brushed Nickel Finish

AE-155ORB - With
Oil Rubbed Bronze Finish



APPROVALS:

Meets or Exceeds The Following:

- ❖ ANSI/ASME A112.18.1
- ❖ CSA B125
- ❖ ANSI/NSF 61 - Sec. 9
- ❖ IAPMO/UPC



BREWSTER, NY: TEL: 800-431-2082 **FAX:** 914-278-9056
HOUSTON, TX: TEL: 800-935-5456 **FAX:** 800-683-4247
LAPALMA, CA: TEL: 866-532-8306 **FAX:** 866-832-8307

Visit Our Web Site: www.matco-norca.com

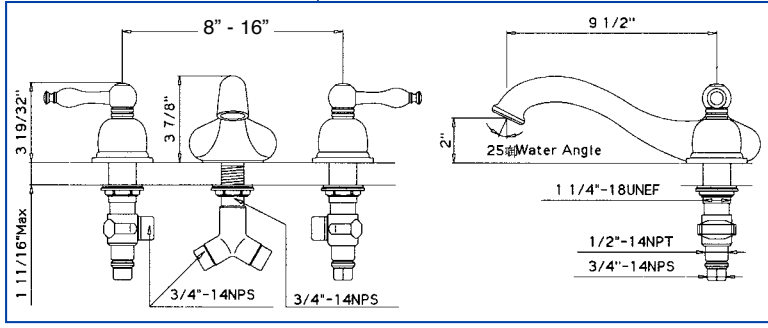
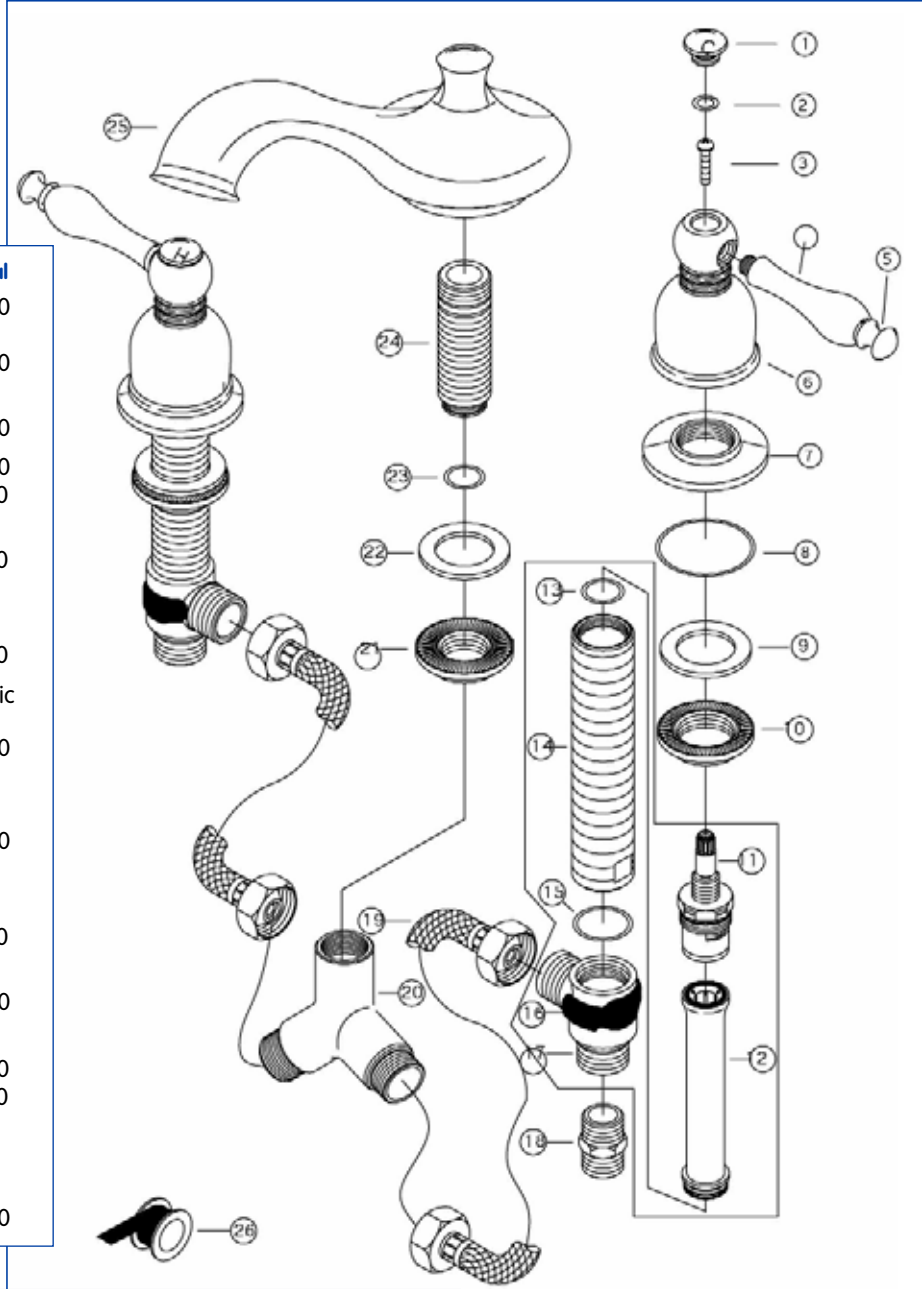
Product Specs Sheet

AE-155 ROMAN TUB FAUCET



Product Spec sheet

No.	Part Title	Material
1	Index Cap	C36000
2	O-Ring	NBR
3	Screw	C36000
4	Handle Escutcheon	C36000
5	Handle Insert	C36000
6	Canopy	C37700
7	Handle Escutcheon	C37700
8	O-Ring	NBR
9	Seal	NBR
10	Nut	C37700
11	Cartridge	Ceramic
12	Connecting Tube	C36000
13	O-Ring	NBR
14	Connecting Tube	C28000
15	O-Ring	NBR
16	Clip	PP
17	Body	C37700
18	Connecting Tube	C36000
19	Hose	PVC
20	T-Tub	C85700
21	Nut	C37700
22	Seal	NBR
23	O-Ring	NBR
24	Connecting Tube	C36000



DESIGNED & PRODUCED BY JOMADVERTISING.COM



BREWSTER, NY: P.O. Box 27 Route 22 Brewster, NY 10509
HOUSTON, TX: 1150 Silber Road Houston, TX 77055
LAPALMA, CT: 5593 Fresca Drive La Palma, CA 90623

Visit Our Web Site: www.matco-norca.com