

☐ **BL-151C**
☐ **BL-151ORB**

☐ **BL-151SS**



Single Handle Kitchen Faucet



FEATURES & BENEFITS

- This Product Contains Less Than 0.25% Weighted Average Lead Content On Wetted Surfaces
- Metal Lever Handle
- Ceramic Cartridge
- Optional Deck Plate Included
- Max Flow Rate 1.8 GPM(6.8 LPM) at 60 PSI (ASME.A112.18.1)

BL-151C
Chrome Finish

BL-151SS
Stainless Steel Finish

BL-151ORB
Oil Rubbed Bronze Finish

APPROVALS:

Meets or Exceeds The Following:

- * ANSI/ASME A112.18.1
- * IAPMO/UPC
- * CA AB1953



CALIFORNIA:
TEXAS:
NEW YORK:

TEL: 866-532-8306
TEL: 800-935-5456
TEL: 800-431-2082

FAX: 866-532-8307
FAX: 800-683-4247
FAX: 800-640-2252

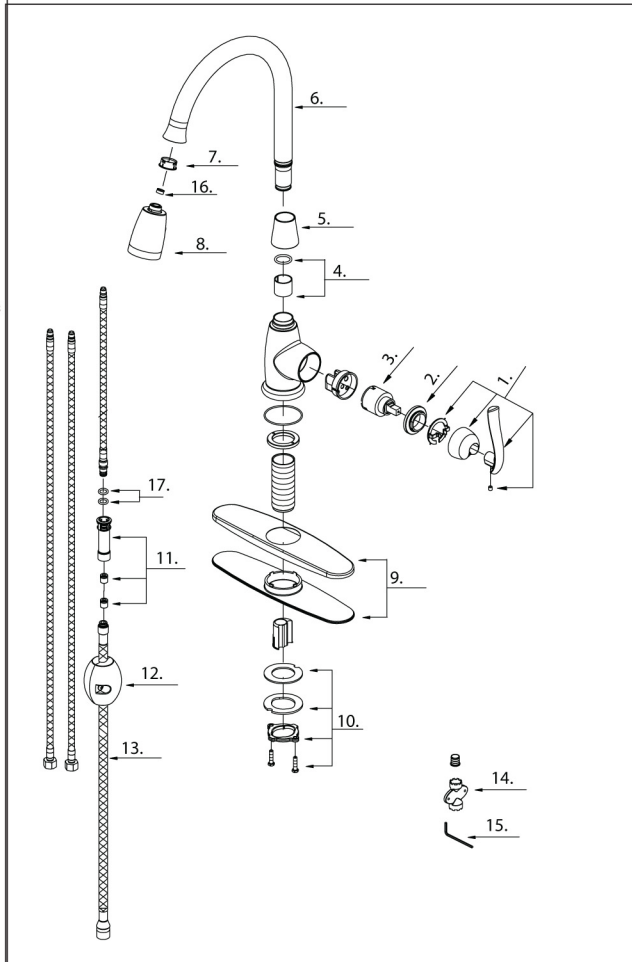
☐ **BL-151C**
☐ **BL-151ORB**

☐ **BL-151SS**

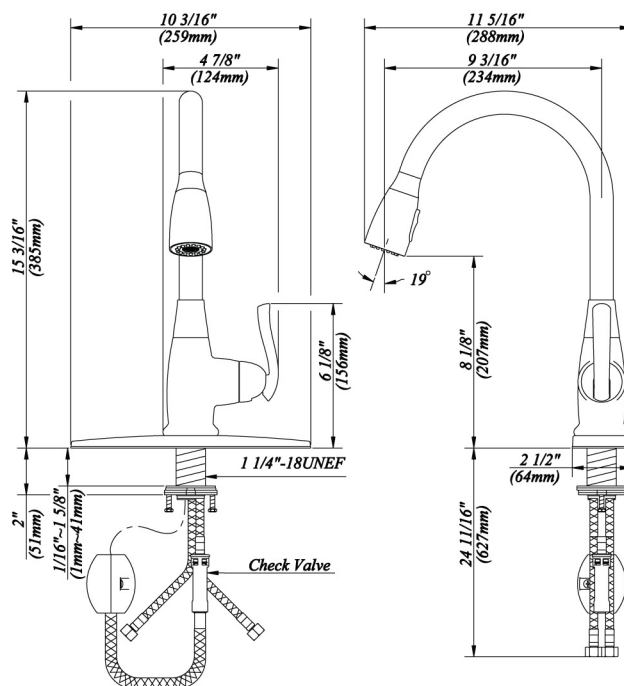


Single Handle Kitchen Faucet

No.	Name	Material
1	Metal Handle Assembly	Zinc Alloy
2	Locking Nut	Brass
3	Ceramic Disc Cartridge	Ceramic & Plastic
4	Spout Seal Kit	Plastic
5	Spout Base	Plastic
6	Spout	Brass
7	Hose Guide	Plastic
8	Hand Spray w/Check Valve	Plastic
9	Cover Plate & Putty Plate	Stainless Steel & Plastic
10	Mounting Hardware Assembly	Stainless Steel
11	Hose Adaptor Assembly	Plastic
12	Weight	Plastic
13	Spray Hose	Nylon
14	Wrench	Plastic
15	Wrench (H2.5 * 19 mm L * 53mmL)	Stainless Steel
16	Flow Restrictor	Plastic
17	O-Ring Set	Rubber



Product Spec Sheet



APPROVALS:

Meets or Exceeds The Following:

- * ANSI/ASME A112.18.1
- * IAPMO/UPC
- * CA AB1953

CALIFORNIA: TEL: 866-532-8306 FAX: 866-532-8307
 TEXAS: TEL: 800-935-5456 FAX: 800-683-4247
 NEW YORK: TEL: 800-431-2082 FAX: 800-640-2252

Visit Our Web Site : www.matco-norca.com