

SCV-050 & SCV-053 Self Closing Valve • Spec Sheet



*Product will have LF imprinted on the body for Lead Free

FEATURES & BENEFITS

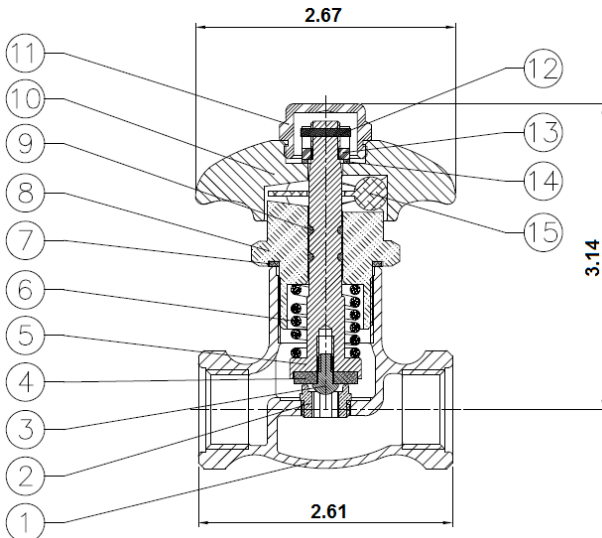
SCV-050

- 1/2" Valve
- With Cross Handle
- NSF 61-9 & UPC Approved

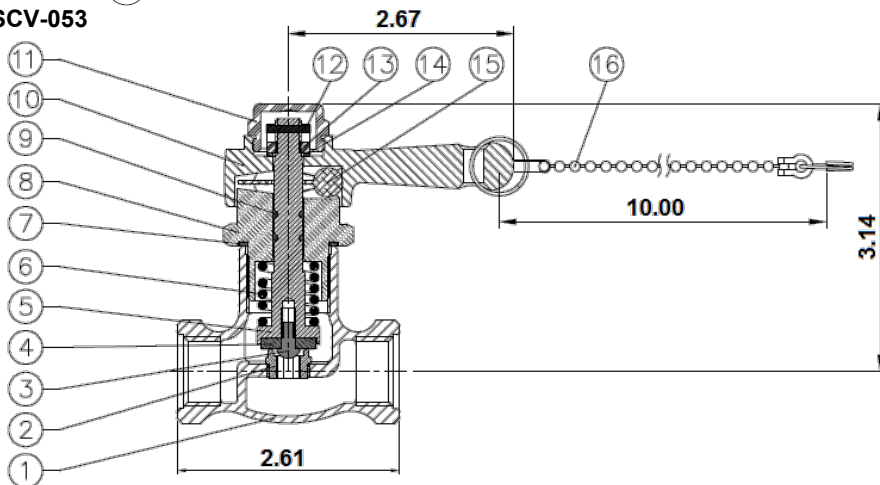
SCV-053

- Same As Above
- With Lever Handle, Chain & Ring

SCV-050



SCV-053



MATERIAL SPECIFICATIONS

No.	Part	Material
1	Body	Brass C89550
2	Sealing Seat	Brass C89550
3	Screw	Brass C89550
4	Washer	EPDM SE-719F
5	Stem	Brass C89550
6	Spring	Stainless Steel S.S. 304
7	Washer	Plastic Delrin 500P NC010
8	Body Nut	Brass C89550
9	O-Ring	BUNA SN-719F
10	Handle	Brass C37700
11	Cap Nut	Brass C37700
12	Pin	Brass C37700
13	Screw Nut	Brass C37700
14	Washer	Brass C37700
15	Bearing Set	Brass C37700/ S.S. 304
16	Beaded Chain	Stainless Steel S.S. 304

*This product complies with 0.25% weighted average lead content on wetted surfaces in accordance with the Safe Drinking Water Act (SDWA) / Federal Public Law No. 111-380.

