

Grooved Adapter Nipples • Spec Sheet

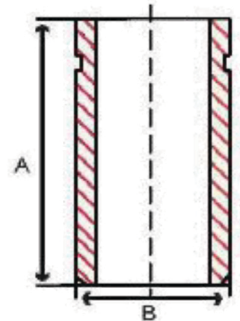


FEATURES & BENEFITS

- Schedule 40
- Grooved x Bevel and Grooved x Threaded
- Conforms to ASTM A53 and ASME B1.20.1
- All Grooves are Cut Grooved Per AWWA C606

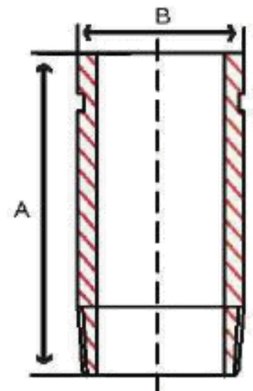
GROOVED x BEVEL DIMENSIONS

Part #	Size	A	B	Weight (lbs)
ZNB084GB	2" x 4"	4.00	2.38	1.10
ZNB094GB	2-1/2" x 4"	4.00	2.88	1.68
ZNB103GB	3" x 3"	3.00	3.50	1.55
ZNB104GB	3" x 4"	4.00	3.50	2.19
ZNB114GB	4" x 4"	4.00	4.50	2.79



GROOVED x THREADED DIMENSIONS

Part #	Size	A	B	Weight (lbs)
ZNB074GT	1-1/2" x 4"	4.00	1.90	0.81
ZNB084GT	2" x 4"	4.00	2.38	1.10
ZNB094GT	2-1/2" x 4"	4.00	2.88	1.68
ZNB103GT	3" x 3"	3.00	3.50	1.55
ZNB104GT	3" x 4"	4.00	3.50	2.18
ZNB114GT	4" x 4"	4.00	4.50	3.09
ZNB116GT	4" x 6"	6.00	4.50	4.90



CALIFORNIA 5595 Fresca Dr., La Palma CA 90623
TEXAS 1150 Silber Rd., Houston TX 77055
ILLINOIS 278 Windy Point Dr., Glendale Heights, IL 60139
GEORGIA 113 Industrial Blvd., Americus, Georgia 31709
NEW YORK PO Box 27, Rt.22, Brewster NY 10509
 WEB: www.matco-norca.com

• Phone: 866-532-8306 • Fax: 866-532-8307
 • Phone: 800-935-5456 • Fax: 713-680-2999
 • Phone: 844-412-5068 • Fax: 800-640-2252
 • Phone: 800-433-7526 • Fax: 800-533-5134
 • Phone: 800-431-2082 • Fax: 845-278-9056
 EMAIL: mail@matco-norca.com